

PANORAMA

LEGEND:

	LOT BOUNDARY
	SURFACE CONTOUR (0.5m INTERVAL)
	KERB
	EASEMENT
	RETAINING WALL
	DRIVEWAY LOCATION
	FOOTPATH
	DENOTES LOT AFFECTED BY FILL
	APZ- ASSET PROTECTION ZONE LINE
	BAL 29
	BAL 19
	BAL 12.5
	APZ AFFECTED LOTS
	BAL 29 CONSTRUCTION
	ACOUSTIC TREATMENT CATEGORY 1
	ACOUSTIC TREATMENT CATEGORY 2
	INFILTRATION SWALE
	STREET TREE

SERVICES:

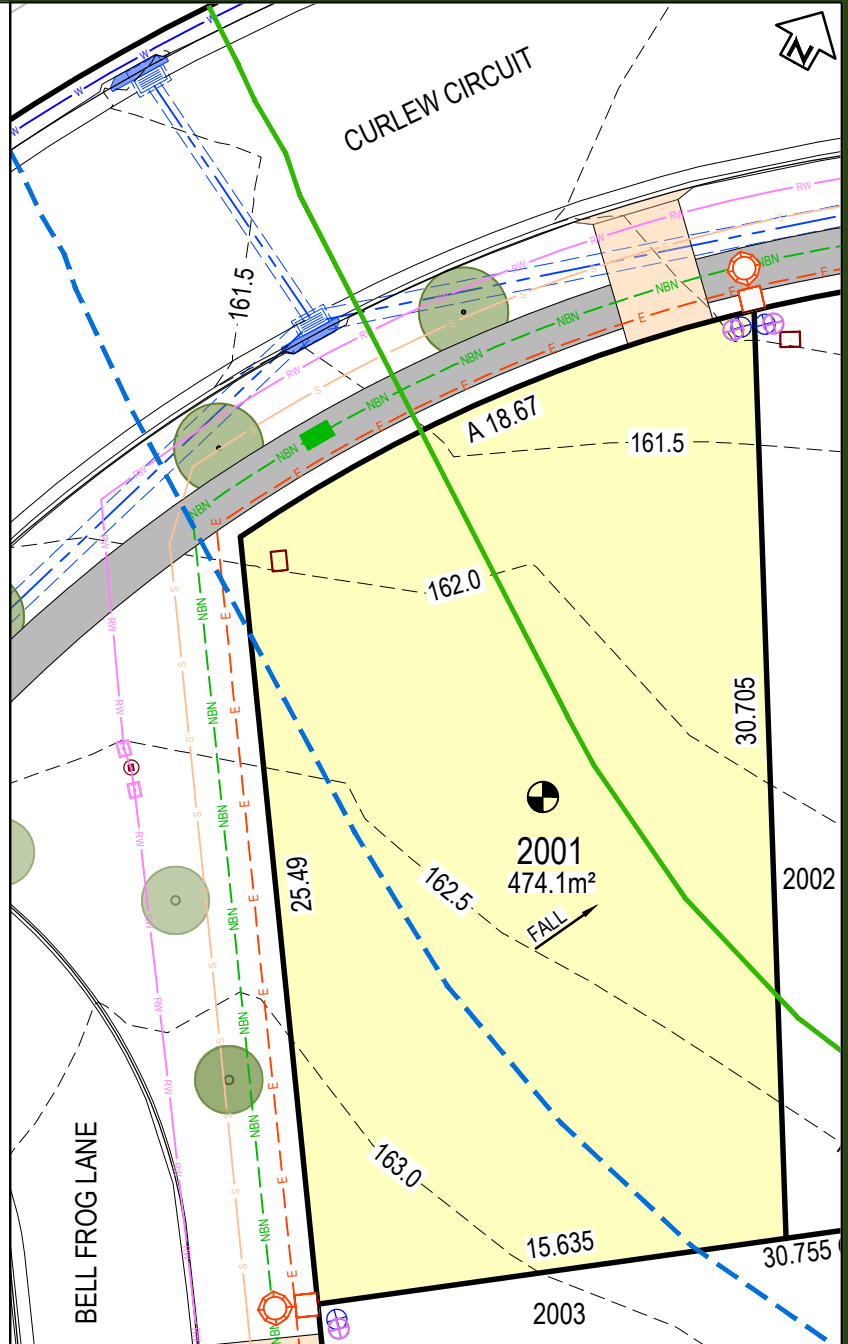
	POTABLE WATER MAIN
	RECYCLED WATER
	ELECTRICAL LINE
	SEWER MAIN
	COMMUNICATIONS / NBN
	DRAINAGE PIT AND PIPE
	SEWER BDY KIT BOX / SEWER MAINTENANCE SHAFT
	ELECTRICAL STRUCTURE / STREET LIGHT
	NBN CONDUIT
	WATER METER / RECYCLED WATER METER

EASEMENT:

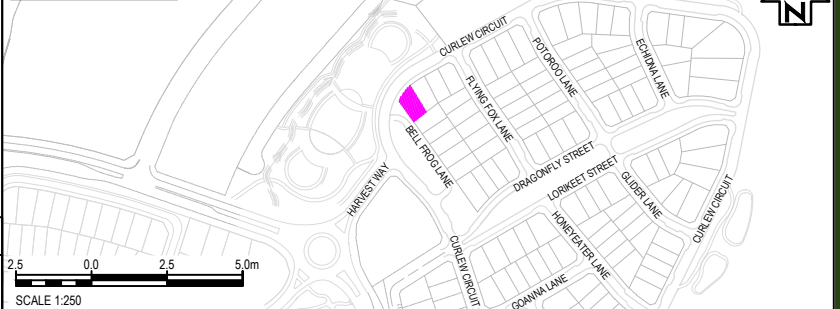
- (A) EASEMENT TO DRAIN WATER 1.5 WIDE
- (B) EASEMENT TO DRAIN WATER VARIABLE WIDTH
- (C) EASEMENT TO DRAIN WATER 2 WIDE
- (D) EASEMENT FOR SUPPORT AND MAINTENANCE 0.5 WIDE
- (E) EASEMENT FOR PADMOUNT SUBSTATION 2.75 WIDE
- (F) RESTRICTION ON THE USE OF LAND
- (G) RESTRICTION ON THE USE OF LAND
- (S) EASEMENT FOR ACCESS MAINTENANCE AND REPAIRS 0.9 WIDE

NOTES:

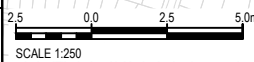
- THE DIMENSIONS, AREAS, EASEMENTS & OTHER DETAILS SHOWN ON THIS PLAN ARE SUBJECT TO FINAL APPROVALS OF COUNCIL & SERVICING AUTHORITIES.
- PURCHASERS SHOULD REFER TO THE REGISTERED PLAN OF SUBDIVISION FOR FINAL DIMENSIONS & OTHER DETAILS.
- PURCHASERS SHOULD EXAMINE THE FULL RANGE OF EASEMENTS & RESTRICTIONS SET OUT IN THE 88B INSTRUMENT ACCOMPANYING THE PLAN OF SUBDIVISION.



LOCALITY PLAN



LOT No.	2001	DATE	08.04.26	SCALE	1 : 250	SIZE	A4	REV	A
TITLE		STATUS		ISSUED FOR INFORMATION					
LOT DISCLOSURE PLAN									



DISCLAIMER

THIS SALES PLAN IS FOR GENERAL INFORMATION PURPOSES ONLY AND IS SUBJECT TO STATUTORY AND LEGAL REQUIREMENTS AND APPROVALS. NO WARRANTY OR REPRESENTATION IS GIVEN AS TO ITS ACCURACY OR COMPLETENESS. TO THE EXTENT PERMITTED BY LAW, LANDCOM (INCLUDING ITS AGENTS AND EMPLOYEES) DISCLAIMS ANY LIABILITY WHATSOEVER IN CONNECTION WITH, RELIANCE UPON OR THE USE OF THIS DOCUMENT.

PANORAMA

LEGEND:

	LOT BOUNDARY
	SURFACE CONTOUR (0.5m INTERVAL)
	KERB
	EASEMENT
	RETAINING WALL
	DRIVEWAY LOCATION
	FOOTPATH
	DENOTES LOT AFFECTED BY FILL
	APZ- ASSET PROTECTION ZONE LINE
	BAL 29
	BAL19
	BAL12.5
	APZ AFFECTED LOTS
	BAL 29 CONSTRUCTION
	ACOUSTIC TREATMENT CATEGORY 1
	ACOUSTIC TREATMENT CATEGORY 2
	INFILTRATION SWALE
	STREET TREE

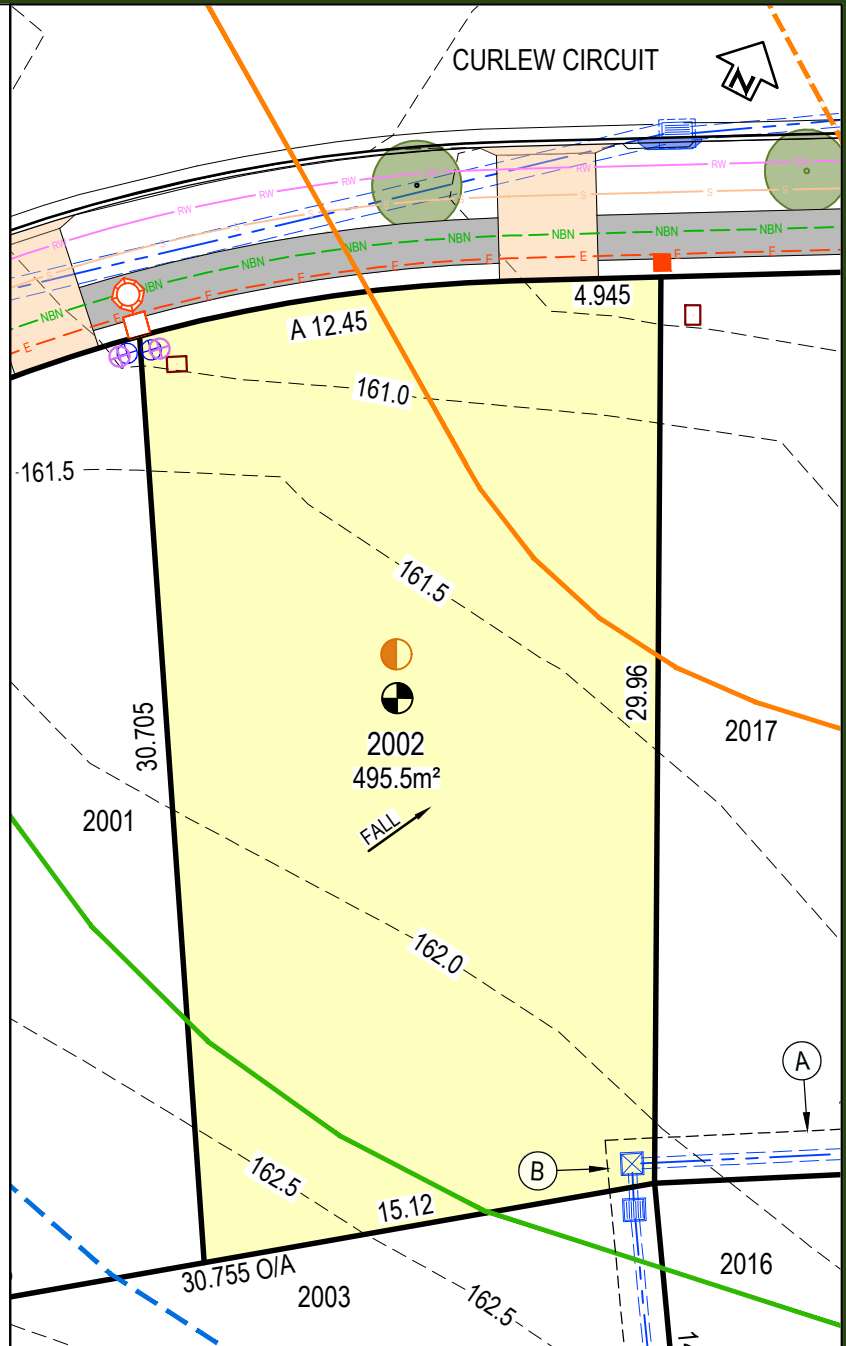
SERVICES:	
	POTABLE WATER MAIN
	RECYCLED WATER
	ELECTRICAL LINE
	SEWER MAIN
	COMMUNICATIONS / NBN
	DRAINAGE PIT AND PIPE
	SEWER BDY KIT BOX / SEWER MAINTENANCE SHAFT
	ELECTRICAL STRUCTURE / STREET LIGHT
	NBN CONDUIT
	WATER METER / RECYCLED WATER METER

EASEMENT:

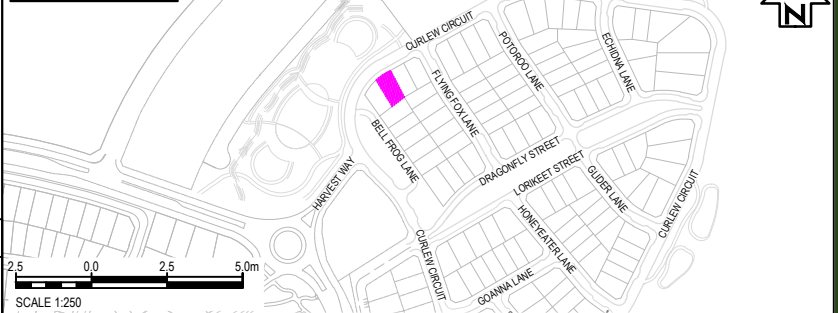
- (A) EASEMENT TO DRAIN WATER 1.5 WIDE
- (B) EASEMENT TO DRAIN WATER VARIABLE WIDTH
- (C) EASEMENT TO DRAIN WATER 2 WIDE
- (D) EASEMENT FOR SUPPORT AND MAINTENANCE 0.5 WIDE
- (E) EASEMENT FOR PADMOUNT SUBSTATION 2.75 WIDE
- (F) RESTRICTION ON THE USE OF LAND
- (G) RESTRICTION ON THE USE OF LAND
- (S) EASEMENT FOR ACCESS MAINTENANCE AND REPAIRS 0.9 WIDE

NOTES:

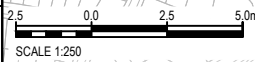
- THE DIMENSIONS, AREAS, EASEMENTS & OTHER DETAILS SHOWN ON THIS PLAN ARE SUBJECT TO FINAL APPROVALS OF COUNCIL & SERVICING AUTHORITIES.
- PURCHASERS SHOULD REFER TO THE REGISTERED PLAN OF SUBDIVISION FOR FINAL DIMENSIONS & OTHER DETAILS.
- PURCHASERS SHOULD EXAMINE THE FULL RANGE OF EASEMENTS & RESTRICTIONS SET OUT IN THE 88B INSTRUMENT ACCOMPANYING THE PLAN OF SUBDIVISION.



LOCALITY PLAN



LOT No.	2002	DATE	08.04.26	SCALE	1 : 250	SIZE	A4	REV	A
TITLE		STATUS							
LOT DISCLOSURE PLAN		ISSUED FOR INFORMATION							



DISCLAIMER

THIS SALES PLAN IS FOR GENERAL INFORMATION PURPOSES ONLY AND IS SUBJECT TO STATUTORY AND LEGAL REQUIREMENTS AND APPROVALS. NO WARRANTY OR REPRESENTATION IS GIVEN AS TO ITS ACCURACY OR COMPLETENESS. TO THE EXTENT PERMITTED BY LAW, LANDCOM (INCLUDING ITS AGENTS AND EMPLOYEES) DISCLAIMS ANY LIABILITY WHATSOEVER IN CONNECTION WITH, RELIANCE UPON OR THE USE OF THIS DOCUMENT.

PANORAMA

LEGEND:

	LOT BOUNDARY
	SURFACE CONTOUR (0.5m INTERVAL)
	KERB
	EASEMENT
	RETAINING WALL
	DRIVEWAY LOCATION
	FOOTPATH
	DENOTES LOT AFFECTED BY FILL
	APZ- ASSET PROTECTION ZONE LINE
	BAL 29
	BAL19
	BAL12.5
	APZ AFFECTED LOTS
	BAL 29 CONSTRUCTION
	ACOUSTIC TREATMENT CATEGORY 1
	ACOUSTIC TREATMENT CATEGORY 2
	INFILTRATION SWALE
	STREET TREE

SERVICES:

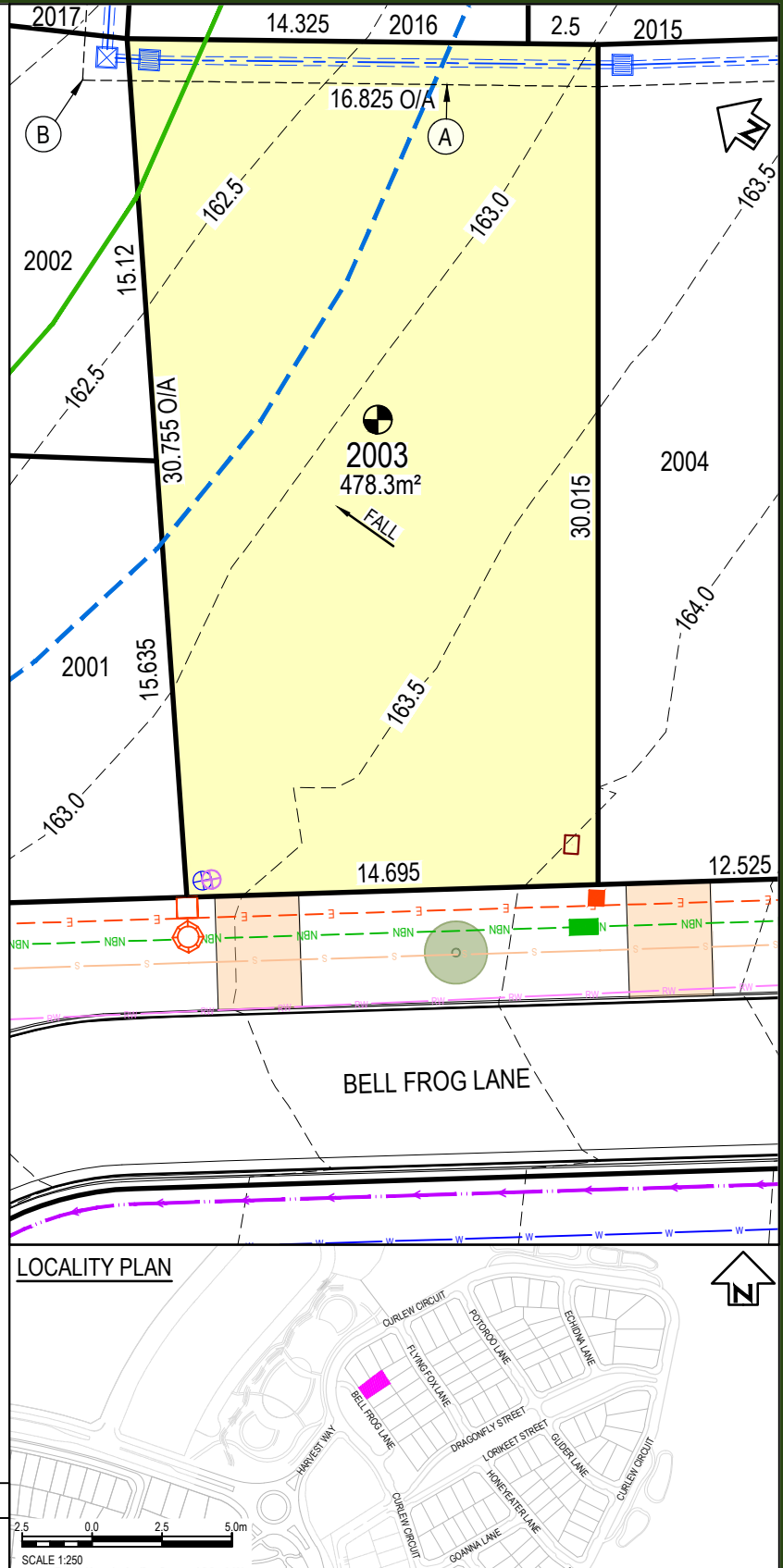
	POTABLE WATER MAIN
	RECYCLED WATER
	ELECTRICAL LINE
	SEWER MAIN
	COMMUNICATIONS / NBN
	DRAINAGE PIT AND PIPE
	SEWER BDY KIT BOX / SEWER MAINTENANCE SHAFT
	ELECTRICAL STRUCTURE / STREET LIGHT
	NBN CONDUIT
	WATER METER / RECYCLED WATER METER

EASEMENT:

- (A) EASEMENT TO DRAIN WATER 1.5 WIDE
- (B) EASEMENT TO DRAIN WATER VARIABLE WIDTH
- (C) EASEMENT TO DRAIN WATER 2 WIDE
- (D) EASEMENT FOR SUPPORT AND MAINTENANCE 0.5 WIDE
- (E) EASEMENT FOR PADMOUNT SUBSTATION 2.75 WIDE
- (F) RESTRICTION ON THE USE OF LAND
- (G) RESTRICTION ON THE USE OF LAND
- (S) EASEMENT FOR ACCESS MAINTENANCE AND REPAIRS 0.9 WIDE

NOTES:

- THE DIMENSIONS, AREAS, EASEMENTS & OTHER DETAILS SHOWN ON THIS PLAN ARE SUBJECT TO FINAL APPROVALS OF COUNCIL & SERVICING AUTHORITIES.
- PURCHASERS SHOULD REFER TO THE REGISTERED PLAN OF SUBDIVISION FOR FINAL DIMENSIONS & OTHER DETAILS.
- PURCHASERS SHOULD EXAMINE THE FULL RANGE OF EASEMENTS & RESTRICTIONS SET OUT IN THE 88B INSTRUMENT ACCOMPANYING THE PLAN OF SUBDIVISION.



LOT No.	2003	DATE	08.04.26	SCALE	1 : 250	SIZE	A4	REV	A
TITLE		STATUS							
LOT DISCLOSURE PLAN		ISSUED FOR INFORMATION							

DISCLAIMER

THIS SALES PLAN IS FOR GENERAL INFORMATION PURPOSES ONLY AND IS SUBJECT TO STATUTORY AND LEGAL REQUIREMENTS AND APPROVALS. NO WARRANTY OR REPRESENTATION IS GIVEN AS TO ITS ACCURACY OR COMPLETENESS. TO THE EXTENT PERMITTED BY LAW, LANDCOM (INCLUDING ITS AGENTS AND EMPLOYEES) DISCLAIMS ANY LIABILITY WHATSOEVER IN CONNECTION WITH, RELIANCE UPON OR THE USE OF THIS DOCUMENT.

PANORAMA

LEGEND:

	LOT BOUNDARY
	SURFACE CONTOUR (0.5m INTERVAL)
	KERB
	EASEMENT
	RETAINING WALL
	DRIVEWAY LOCATION
	FOOTPATH
	DENOTES LOT AFFECTED BY FILL
	APZ- ASSET PROTECTION ZONE LINE
	BAL 29
	BAL 19
	BAL 12.5
	APZ AFFECTED LOTS
	BAL 29 CONSTRUCTION
	ACOUSTIC TREATMENT CATEGORY 1
	ACOUSTIC TREATMENT CATEGORY 2
	INFILTRATION SWALE
	STREET TREE

SERVICES:

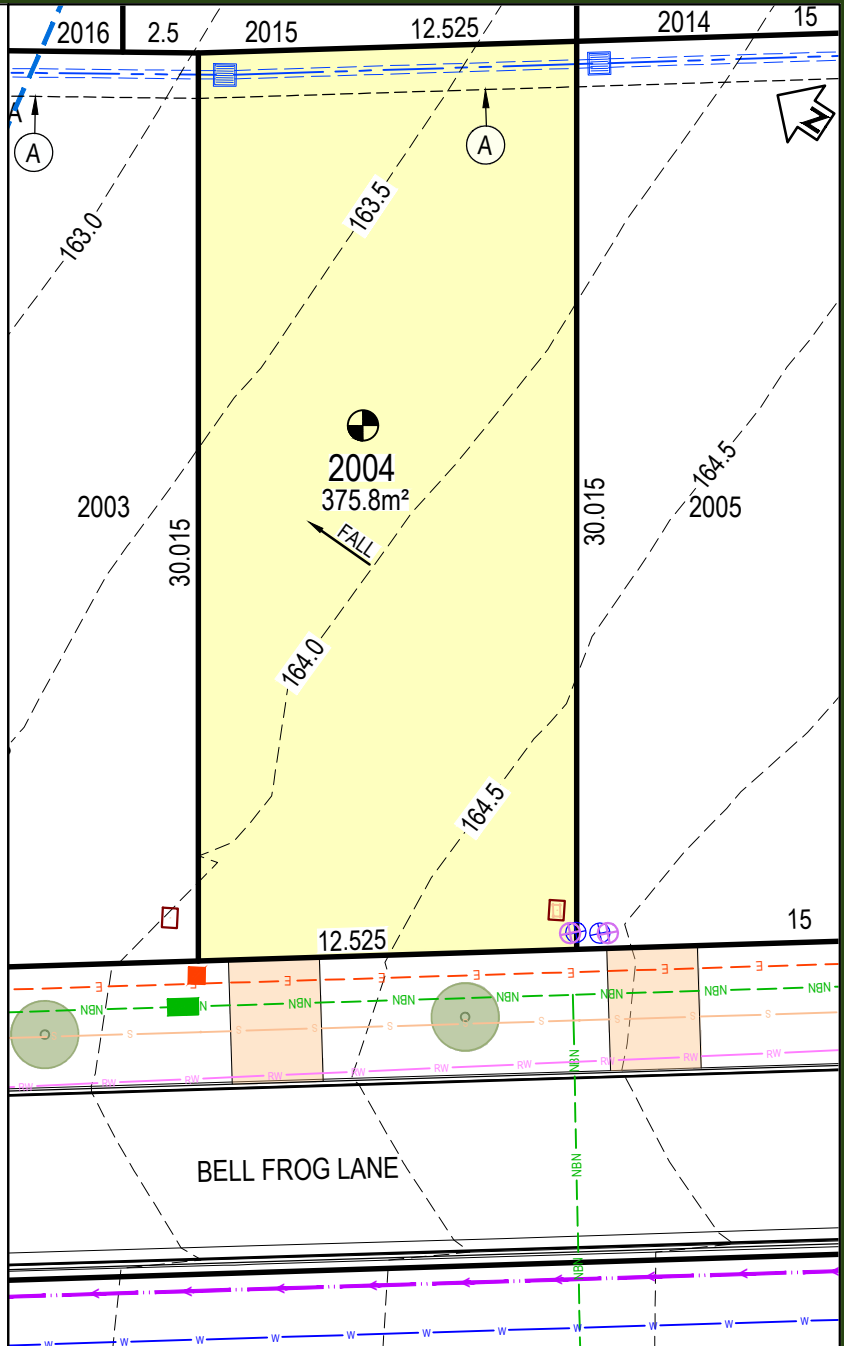
	POTABLE WATER MAIN
	RECYCLED WATER
	ELECTRICAL LINE
	SEWER MAIN
	COMMUNICATIONS / NBN
	DRAINAGE PIT AND PIPE
	SEWER BDY KIT BOX / SEWER MAINTENANCE SHAFT
	ELECTRICAL STRUCTURE / STREET LIGHT
	NBN CONDUIT
	WATER METER / RECYCLED WATER METER

EASEMENT:

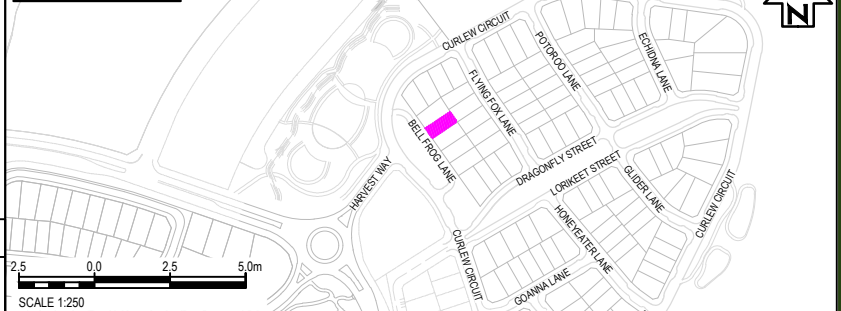
- (A) EASEMENT TO DRAIN WATER 1.5 WIDE
- (B) EASEMENT TO DRAIN WATER VARIABLE WIDTH
- (C) EASEMENT TO DRAIN WATER 2 WIDE
- (D) EASEMENT FOR SUPPORT AND MAINTENANCE 0.5 WIDE
- (E) EASEMENT FOR PADMOUNT SUBSTATION 2.75 WIDE
- (F) RESTRICTION ON THE USE OF LAND
- (G) RESTRICTION ON THE USE OF LAND
- (S) EASEMENT FOR ACCESS MAINTENANCE AND REPAIRS 0.9 WIDE

NOTES:

- THE DIMENSIONS, AREAS, EASEMENTS & OTHER DETAILS SHOWN ON THIS PLAN ARE SUBJECT TO FINAL APPROVALS OF COUNCIL & SERVICING AUTHORITIES.
- PURCHASERS SHOULD REFER TO THE REGISTERED PLAN OF SUBDIVISION FOR FINAL DIMENSIONS & OTHER DETAILS.
- PURCHASERS SHOULD EXAMINE THE FULL RANGE OF EASEMENTS & RESTRICTIONS SET OUT IN THE 88B INSTRUMENT ACCOMPANYING THE PLAN OF SUBDIVISION.



LOCALITY PLAN



LOT No.	2004	DATE	08.04.26	SCALE	1 : 250	SIZE	A4	REV	A
TITLE	LOT DISCLOSURE PLAN		STATUS	ISSUED FOR INFORMATION					

DISCLAIMER

THIS SALES PLAN IS FOR GENERAL INFORMATION PURPOSES ONLY AND IS SUBJECT TO STATUTORY AND LEGAL REQUIREMENTS AND APPROVALS. NO WARRANTY OR REPRESENTATION IS GIVEN AS TO ITS ACCURACY OR COMPLETENESS. TO THE EXTENT PERMITTED BY LAW, LANDCOM (INCLUDING ITS AGENTS AND EMPLOYEES) DISCLAIMS ANY LIABILITY WHATSOEVER IN CONNECTION WITH, RELIANCE UPON OR THE USE OF THIS DOCUMENT.

PANORAMA

LEGEND:

	LOT BOUNDARY
	SURFACE CONTOUR (0.5m INTERVAL)
	KERB
	EASEMENT
	RETAINING WALL
	DRIVEWAY LOCATION
	FOOTPATH
	DENOTES LOT AFFECTED BY FILL
	APZ- ASSET PROTECTION ZONE LINE
	BAL 29
	BAL 19
	BAL 12.5
	APZ AFFECTED LOTS
	BAL 29 CONSTRUCTION
	ACOUSTIC TREATMENT CATEGORY 1
	ACOUSTIC TREATMENT CATEGORY 2
	INFILTRATION SWALE
	STREET TREE

SERVICES:

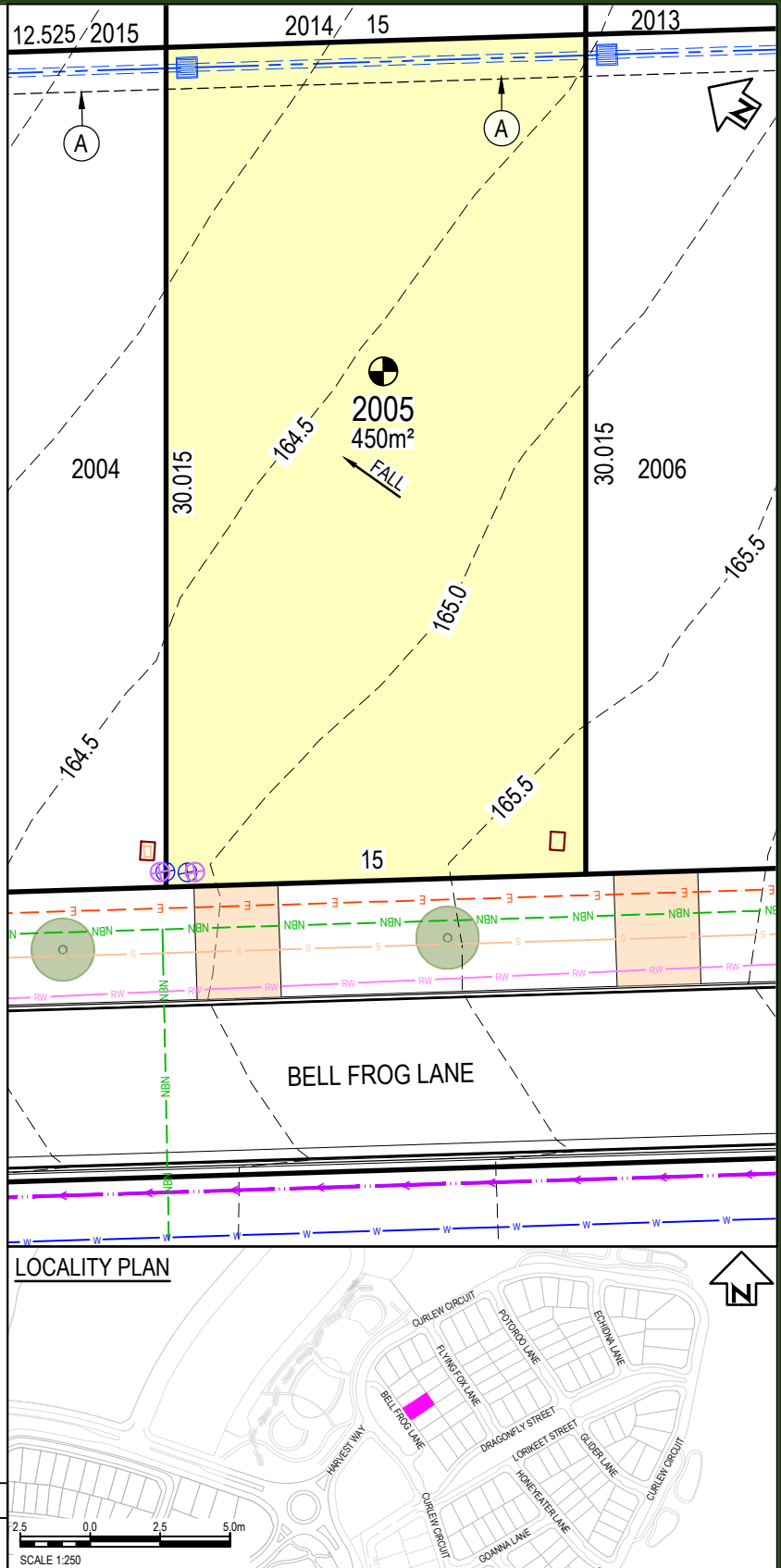
	POTABLE WATER MAIN
	RECYCLED WATER
	ELECTRICAL LINE
	SEWER MAIN
	COMMUNICATIONS / NBN
	DRAINAGE PIT AND PIPE
	SEWER BDY KIT BOX / SEWER MAINTENANCE SHAFT
	ELECTRICAL STRUCTURE / STREET LIGHT
	NBN CONDUIT
	WATER METER / RECYCLED WATER METER

EASEMENT:

- (A) EASEMENT TO DRAIN WATER 1.5 WIDE
- (B) EASEMENT TO DRAIN WATER VARIABLE WIDTH
- (C) EASEMENT TO DRAIN WATER 2 WIDE
- (D) EASEMENT FOR SUPPORT AND MAINTENANCE 0.5 WIDE
- (E) EASEMENT FOR PADMOUNT SUBSTATION 2.75 WIDE
- (F) RESTRICTION ON THE USE OF LAND
- (G) RESTRICTION ON THE USE OF LAND
- (S) EASEMENT FOR ACCESS MAINTENANCE AND REPAIRS 0.9 WIDE

NOTES:

- THE DIMENSIONS, AREAS, EASEMENTS & OTHER DETAILS SHOWN ON THIS PLAN ARE SUBJECT TO FINAL APPROVALS OF COUNCIL & SERVICING AUTHORITIES.
- PURCHASERS SHOULD REFER TO THE REGISTERED PLAN OF SUBDIVISION FOR FINAL DIMENSIONS & OTHER DETAILS.
- PURCHASERS SHOULD EXAMINE THE FULL RANGE OF EASEMENTS & RESTRICTIONS SET OUT IN THE 88B INSTRUMENT ACCOMPANYING THE PLAN OF SUBDIVISION.



LOT No.	2005	DATE	08.04.26	SCALE	1 : 250	SIZE	A4	REV	A
TITLE	LOT DISCLOSURE PLAN		STATUS	ISSUED FOR INFORMATION					

DISCLAIMER

THIS SALES PLAN IS FOR GENERAL INFORMATION PURPOSES ONLY AND IS SUBJECT TO STATUTORY AND LEGAL REQUIREMENTS AND APPROVALS. NO WARRANTY OR REPRESENTATION IS GIVEN AS TO ITS ACCURACY OR COMPLETENESS. TO THE EXTENT PERMITTED BY LAW, LANDCOM (INCLUDING ITS AGENTS AND EMPLOYEES) DISCLAIMS ANY LIABILITY WHATSOEVER IN CONNECTION WITH, RELIANCE UPON OR THE USE OF THIS DOCUMENT.

PANORAMA

LEGEND:

	LOT BOUNDARY
	SURFACE CONTOUR (0.5m INTERVAL)
	KERB
	EASEMENT
	RETAINING WALL
	DRIVEWAY LOCATION
	FOOTPATH
	DENOTES LOT AFFECTED BY FILL
	APZ- ASSET PROTECTION ZONE LINE
	BAL 29
	BAL 19
	BAL 12.5
	APZ AFFECTED LOTS
	BAL 29 CONSTRUCTION
	ACOUSTIC TREATMENT CATEGORY 1
	ACOUSTIC TREATMENT CATEGORY 2
	INFILTRATION SWALE
	STREET TREE

SERVICES:

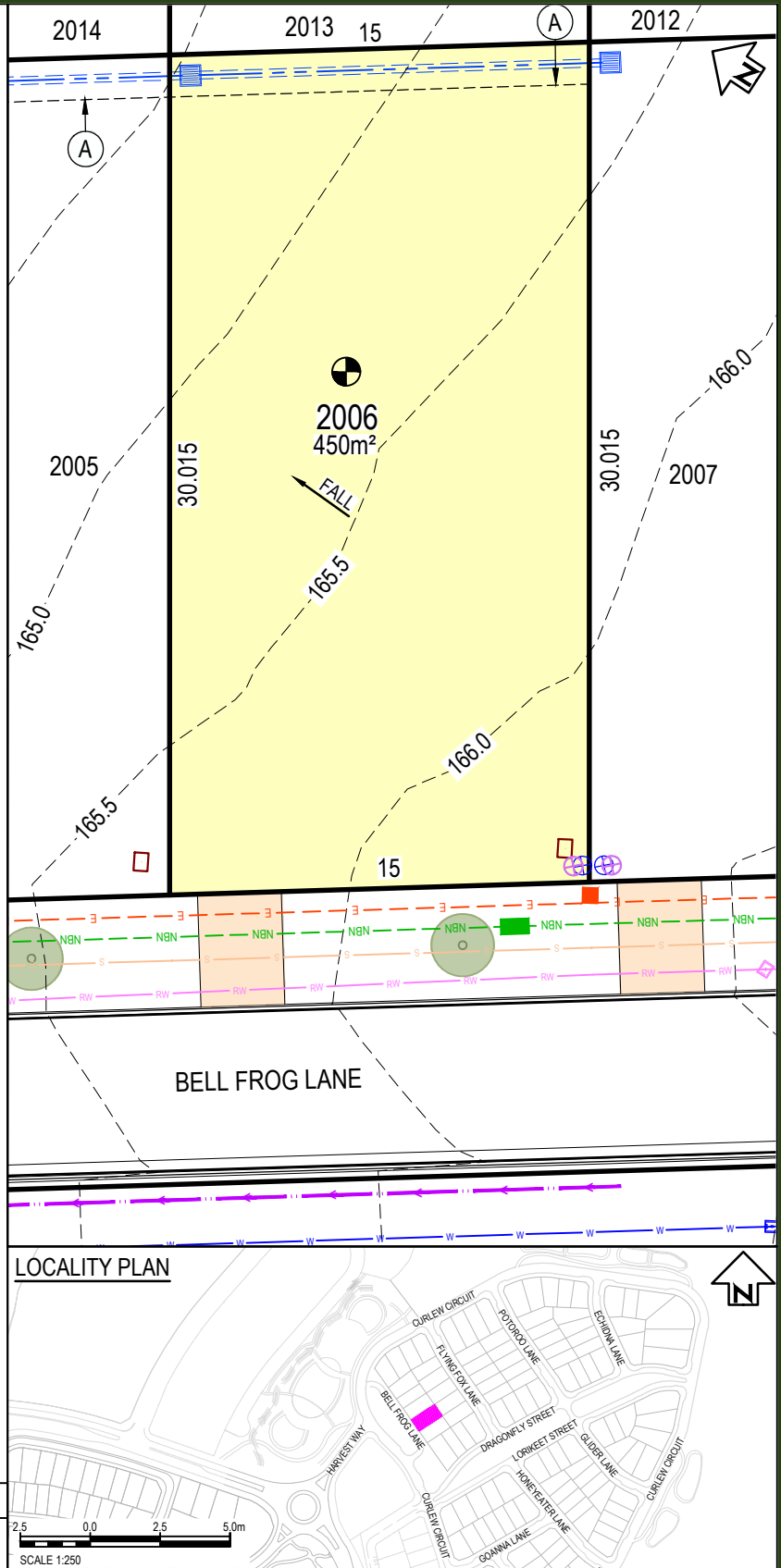
	POTABLE WATER MAIN
	RECYCLED WATER
	ELECTRICAL LINE
	SEWER MAIN
	COMMUNICATIONS / NBN
	DRAINAGE PIT AND PIPE
	SEWER BDY KIT BOX / SEWER MAINTENANCE SHAFT
	ELECTRICAL STRUCTURE / STREET LIGHT
	NBN CONDUIT
	WATER METER / RECYCLED WATER METER

EASEMENT:

- (A) EASEMENT TO DRAIN WATER 1.5 WIDE
- (B) EASEMENT TO DRAIN WATER VARIABLE WIDTH
- (C) EASEMENT TO DRAIN WATER 2 WIDE
- (D) EASEMENT FOR SUPPORT AND MAINTENANCE 0.5 WIDE
- (E) EASEMENT FOR PADMOUNT SUBSTATION 2.75 WIDE
- (F) RESTRICTION ON THE USE OF LAND
- (G) RESTRICTION ON THE USE OF LAND
- (S) EASEMENT FOR ACCESS MAINTENANCE AND REPAIRS 0.9 WIDE

NOTES:

- THE DIMENSIONS, AREAS, EASEMENTS & OTHER DETAILS SHOWN ON THIS PLAN ARE SUBJECT TO FINAL APPROVALS OF COUNCIL & SERVICING AUTHORITIES.
- PURCHASERS SHOULD REFER TO THE REGISTERED PLAN OF SUBDIVISION FOR FINAL DIMENSIONS & OTHER DETAILS.
- PURCHASERS SHOULD EXAMINE THE FULL RANGE OF EASEMENTS & RESTRICTIONS SET OUT IN THE 88B INSTRUMENT ACCOMPANYING THE PLAN OF SUBDIVISION.



LOT No.	2006	DATE	08.04.26	SCALE	1 : 250	SIZE	A4	REV	A
TITLE	LOT DISCLOSURE PLAN		STATUS ISSUED FOR INFORMATION						

DISCLAIMER

THIS SALES PLAN IS FOR GENERAL INFORMATION PURPOSES ONLY AND IS SUBJECT TO STATUTORY AND LEGAL REQUIREMENTS AND APPROVALS. NO WARRANTY OR REPRESENTATION IS GIVEN AS TO ITS ACCURACY OR COMPLETENESS. TO THE EXTENT PERMITTED BY LAW, LANDCOM (INCLUDING ITS AGENTS AND EMPLOYEES) DISCLAIMS ANY LIABILITY WHATSOEVER IN CONNECTION WITH, RELIANCE UPON OR THE USE OF THIS DOCUMENT.

PANORAMA

LEGEND:

	LOT BOUNDARY
	SURFACE CONTOUR (0.5m INTERVAL)
	KERB
	EASEMENT
	RETAINING WALL
	DRIVEWAY LOCATION
	FOOTPATH
	DENOTES LOT AFFECTED BY FILL
	APZ- ASSET PROTECTION ZONE LINE
	BAL 29
	BAL 19
	BAL 12.5
	APZ AFFECTED LOTS
	BAL 29 CONSTRUCTION
	ACOUSTIC TREATMENT CATEGORY 1
	ACOUSTIC TREATMENT CATEGORY 2
	INFILTRATION SWALE
	STREET TREE

SERVICES:

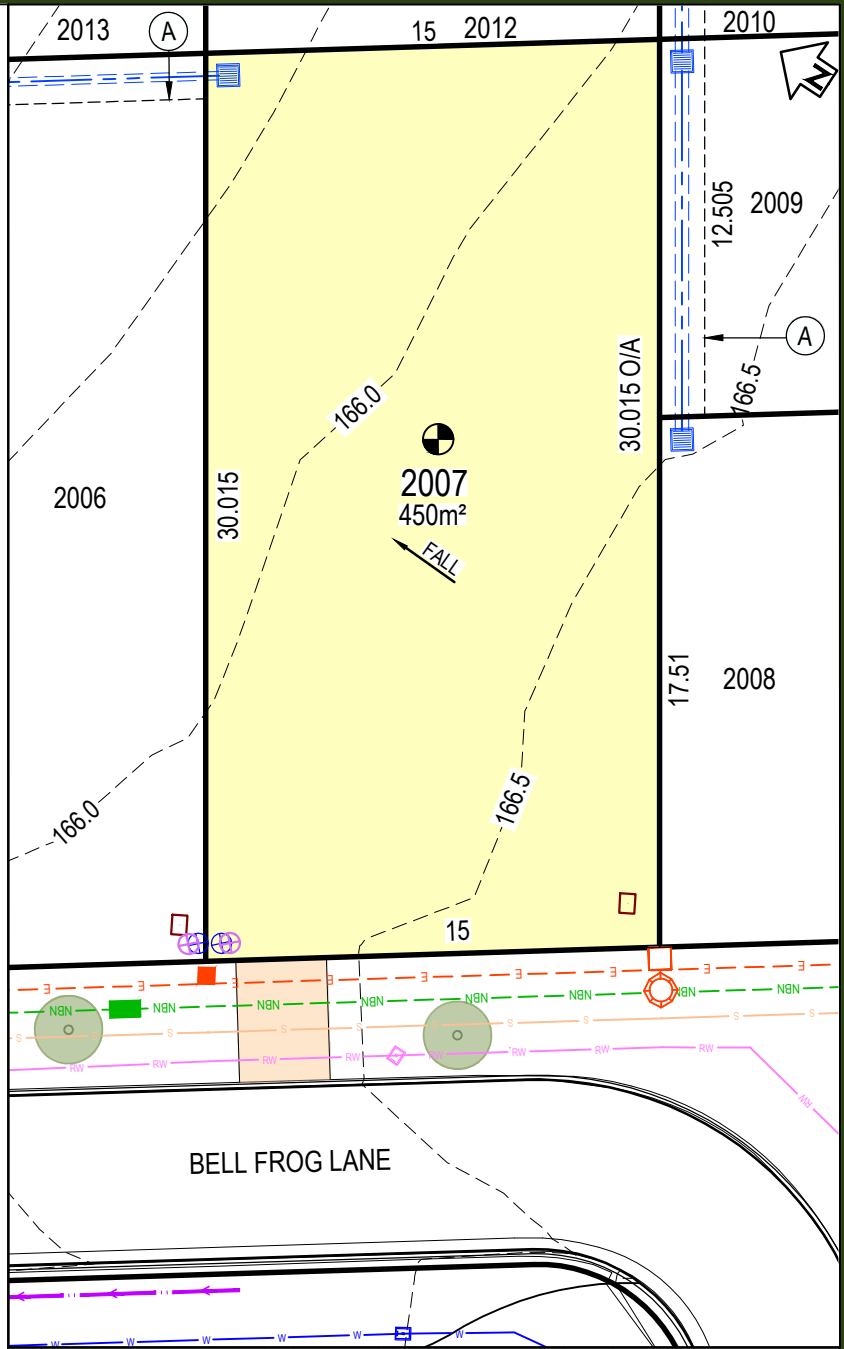
	POTABLE WATER MAIN
	RECYCLED WATER
	ELECTRICAL LINE
	SEWER MAIN
	COMMUNICATIONS / NBN
	DRAINAGE PIT AND PIPE
	SEWER BDY KIT BOX / SEWER MAINTENANCE SHAFT
	ELECTRICAL STRUCTURE / STREET LIGHT
	NBN CONDUIT
	WATER METER / RECYCLED WATER METER

EASEMENT:

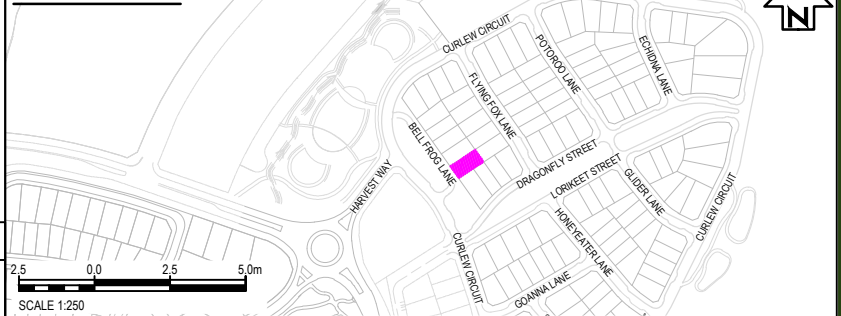
- (A) EASEMENT TO DRAIN WATER 1.5 WIDE
- (B) EASEMENT TO DRAIN WATER VARIABLE WIDTH
- (C) EASEMENT TO DRAIN WATER 2 WIDE
- (D) EASEMENT FOR SUPPORT AND MAINTENANCE 0.5 WIDE
- (E) EASEMENT FOR PADMOUNT SUBSTATION 2.75 WIDE
- (F) RESTRICTION ON THE USE OF LAND
- (G) RESTRICTION ON THE USE OF LAND
- (S) EASEMENT FOR ACCESS MAINTENANCE AND REPAIRS 0.9 WIDE

NOTES:

- THE DIMENSIONS, AREAS, EASEMENTS & OTHER DETAILS SHOWN ON THIS PLAN ARE SUBJECT TO FINAL APPROVALS OF COUNCIL & SERVICING AUTHORITIES.
- PURCHASERS SHOULD REFER TO THE REGISTERED PLAN OF SUBDIVISION FOR FINAL DIMENSIONS & OTHER DETAILS.
- PURCHASERS SHOULD EXAMINE THE FULL RANGE OF EASEMENTS & RESTRICTIONS SET OUT IN THE 88B INSTRUMENT ACCOMPANYING THE PLAN OF SUBDIVISION.



LOCALITY PLAN



LOT No.	2007	DATE	08.04.26	SCALE	1 : 250	SIZE	A4	REV	A
TITLE	LOT DISCLOSURE PLAN		STATUS	ISSUED FOR INFORMATION					

DISCLAIMER

THIS SALES PLAN IS FOR GENERAL INFORMATION PURPOSES ONLY AND IS SUBJECT TO STATUTORY AND LEGAL REQUIREMENTS AND APPROVALS. NO WARRANTY OR REPRESENTATION IS GIVEN AS TO ITS ACCURACY OR COMPLETENESS. TO THE EXTENT PERMITTED BY LAW, LANDCOM (INCLUDING ITS AGENTS AND EMPLOYEES) DISCLAIMS ANY LIABILITY WHATSOEVER IN CONNECTION WITH, RELIANCE UPON OR THE USE OF THIS DOCUMENT.



PANORAMA

LEGEND:

	LOT BOUNDARY
	SURFACE CONTOUR (0.5m INTERVAL)
	KERB
	EASEMENT
	RETAINING WALL
	DRIVEWAY LOCATION
	FOOTPATH
	DENOTES LOT AFFECTED BY FILL
	APZ- ASSET PROTECTION ZONE LINE
	BAL 29
	BAL 19
	BAL 12.5
	APZ AFFECTED LOTS
	BAL 29 CONSTRUCTION
	ACOUSTIC TREATMENT CATEGORY 1
	ACOUSTIC TREATMENT CATEGORY 2
	INFILTRATION SWALE
	STREET TREE

SERVICES:

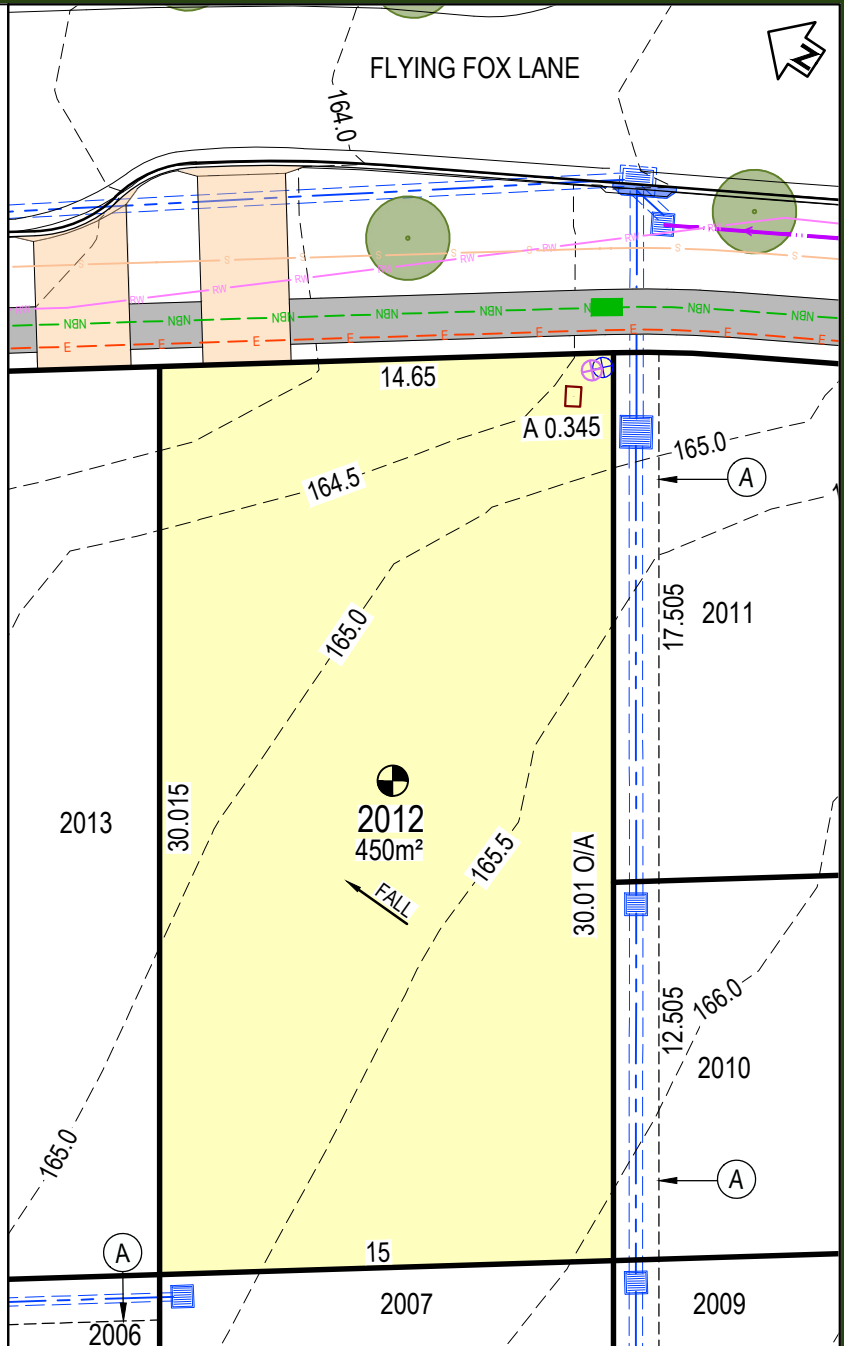
	POTABLE WATER MAIN
	RECYCLED WATER
	ELECTRICAL LINE
	SEWER MAIN
	COMMUNICATIONS / NBN
	DRAINAGE PIT AND PIPE
	SEWER BDY KIT BOX / SEWER MAINTENANCE SHAFT
	ELECTRICAL STRUCTURE / STREET LIGHT
	NBN CONDUIT
	WATER METER / RECYCLED WATER METER

EASEMENT:

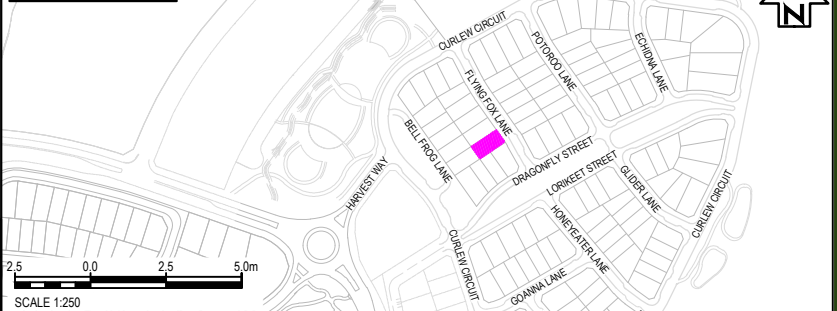
- (A) EASEMENT TO DRAIN WATER 1.5 WIDE
- (B) EASEMENT TO DRAIN WATER VARIABLE WIDTH
- (C) EASEMENT TO DRAIN WATER 2 WIDE
- (D) EASEMENT FOR SUPPORT AND MAINTENANCE 0.5 WIDE
- (E) EASEMENT FOR PADMOUNT SUBSTATION 2.75 WIDE
- (F) RESTRICTION ON THE USE OF LAND
- (G) RESTRICTION ON THE USE OF LAND
- (S) EASEMENT FOR ACCESS MAINTENANCE AND REPAIRS 0.9 WIDE

NOTES:

- THE DIMENSIONS, AREAS, EASEMENTS & OTHER DETAILS SHOWN ON THIS PLAN ARE SUBJECT TO FINAL APPROVALS OF COUNCIL & SERVICING AUTHORITIES.
- PURCHASERS SHOULD REFER TO THE REGISTERED PLAN OF SUBDIVISION FOR FINAL DIMENSIONS & OTHER DETAILS.
- PURCHASERS SHOULD EXAMINE THE FULL RANGE OF EASEMENTS & RESTRICTIONS SET OUT IN THE 88B INSTRUMENT ACCOMPANYING THE PLAN OF SUBDIVISION.



LOCALITY PLAN



LOT No.	2012	DATE	08.04.26	SCALE	1 : 250	SIZE	A4	REV	A
TITLE	LOT DISCLOSURE PLAN		STATUS ISSUED FOR INFORMATION						

DISCLAIMER

THIS SALES PLAN IS FOR GENERAL INFORMATION PURPOSES ONLY AND IS SUBJECT TO STATUTORY AND LEGAL REQUIREMENTS AND APPROVALS. NO WARRANTY OR REPRESENTATION IS GIVEN AS TO ITS ACCURACY OR COMPLETENESS. TO THE EXTENT PERMITTED BY LAW, LANDCOM (INCLUDING ITS AGENTS AND EMPLOYEES) DISCLAIMS ANY LIABILITY WHATSOEVER IN CONNECTION WITH, RELIANCE UPON OR THE USE OF THIS DOCUMENT.

PANORAMA

LEGEND:

	LOT BOUNDARY
	SURFACE CONTOUR (0.5m INTERVAL)
	KERB
	EASEMENT
	RETAINING WALL
	DRIVEWAY LOCATION
	FOOTPATH
	DENOTES LOT AFFECTED BY FILL
	APZ- ASSET PROTECTION ZONE LINE
	BAL 29
	BAL19
	BAL12.5
	APZ AFFECTED LOTS
	BAL 29 CONSTRUCTION
	ACOUSTIC TREATMENT CATEGORY 1
	ACOUSTIC TREATMENT CATEGORY 2
	INFILTRATION SWALE
	STREET TREE

SERVICES:

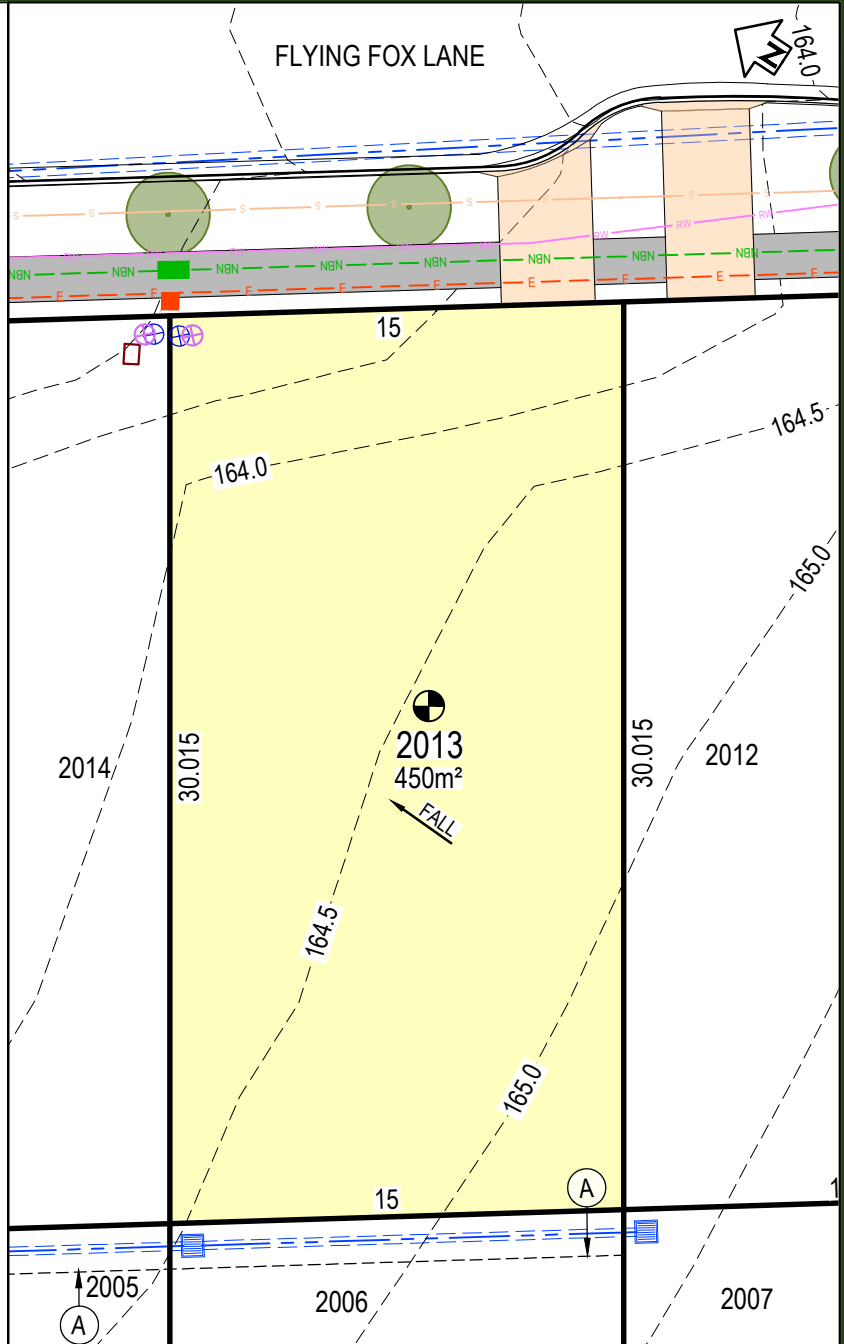
	POTABLE WATER MAIN
	RECYCLED WATER
	ELECTRICAL LINE
	SEWER MAIN
	COMMUNICATIONS / NBN
	DRAINAGE PIT AND PIPE
	SEWER BDY KIT BOX / SEWER MAINTENANCE SHAFT
	ELECTRICAL STRUCTURE / STREET LIGHT
	NBN CONDUIT
	WATER METER / RECYCLED WATER METER

EASEMENT:

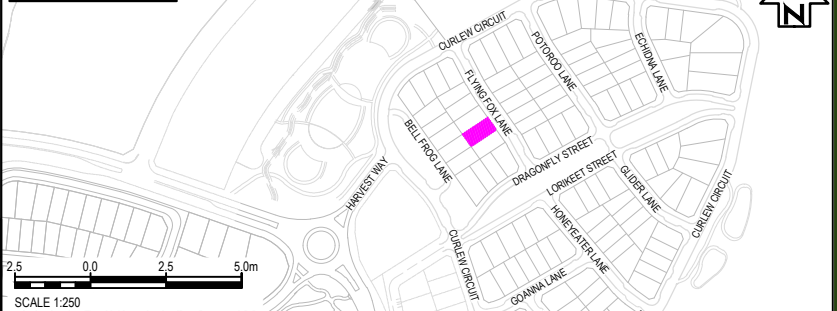
- (A) EASEMENT TO DRAIN WATER 1.5 WIDE
- (B) EASEMENT TO DRAIN WATER VARIABLE WIDTH
- (C) EASEMENT TO DRAIN WATER 2 WIDE
- (D) EASEMENT FOR SUPPORT AND MAINTENANCE 0.5 WIDE
- (E) EASEMENT FOR PADMOUNT SUBSTATION 2.75 WIDE
- (F) RESTRICTION ON THE USE OF LAND
- (G) RESTRICTION ON THE USE OF LAND
- (S) EASEMENT FOR ACCESS MAINTENANCE AND REPAIRS 0.9 WIDE

NOTES:

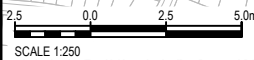
- THE DIMENSIONS, AREAS, EASEMENTS & OTHER DETAILS SHOWN ON THIS PLAN ARE SUBJECT TO FINAL APPROVALS OF COUNCIL & SERVICING AUTHORITIES.
- PURCHASERS SHOULD REFER TO THE REGISTERED PLAN OF SUBDIVISION FOR FINAL DIMENSIONS & OTHER DETAILS.
- PURCHASERS SHOULD EXAMINE THE FULL RANGE OF EASEMENTS & RESTRICTIONS SET OUT IN THE 88B INSTRUMENT ACCOMPANYING THE PLAN OF SUBDIVISION.



LOCALITY PLAN



LOT No.	2013	DATE	08.04.26	SCALE	1 : 250	SIZE	A4	REV	A
TITLE		STATUS							
LOT DISCLOSURE PLAN		ISSUED FOR INFORMATION							



DISCLAIMER

THIS SALES PLAN IS FOR GENERAL INFORMATION PURPOSES ONLY AND IS SUBJECT TO STATUTORY AND LEGAL REQUIREMENTS AND APPROVALS. NO WARRANTY OR REPRESENTATION IS GIVEN AS TO ITS ACCURACY OR COMPLETENESS. TO THE EXTENT PERMITTED BY LAW, LANDCOM (INCLUDING ITS AGENTS AND EMPLOYEES) DISCLAIMS ANY LIABILITY WHATSOEVER IN CONNECTION WITH, RELIANCE UPON OR THE USE OF THIS DOCUMENT.

PANORAMA

LEGEND:

	LOT BOUNDARY
	SURFACE CONTOUR (0.5m INTERVAL)
	KERB
	EASEMENT
	RETAINING WALL
	DRIVEWAY LOCATION
	FOOTPATH
	DENOTES LOT AFFECTED BY FILL
	APZ- ASSET PROTECTION ZONE LINE
	BAL 29
	BAL 19
	BAL 12.5
	APZ AFFECTED LOTS
	BAL 29 CONSTRUCTION
	ACOUSTIC TREATMENT CATEGORY 1
	ACOUSTIC TREATMENT CATEGORY 2
	INFILTRATION SWALE
	STREET TREE

SERVICES:

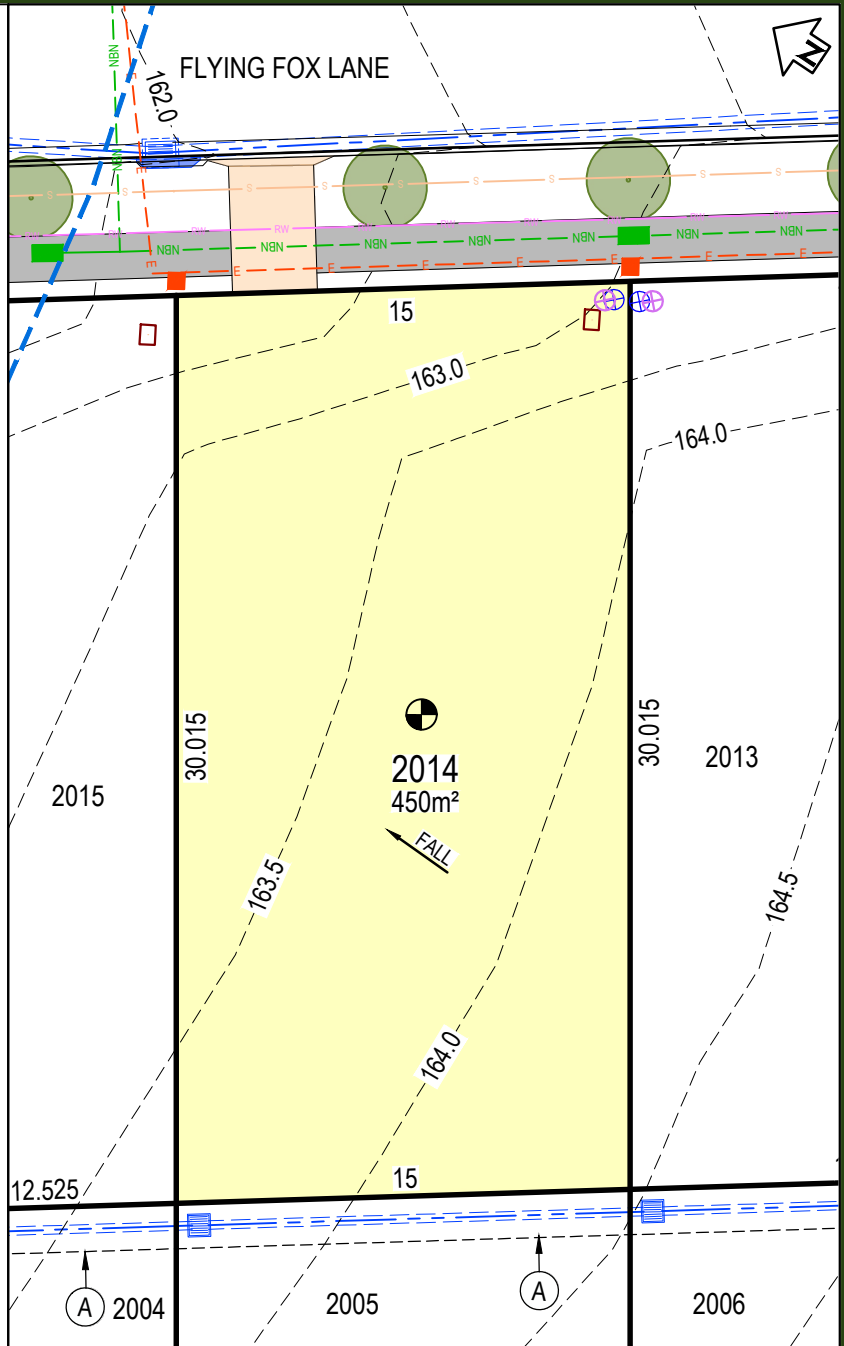
	POTABLE WATER MAIN
	RECYCLED WATER
	ELECTRICAL LINE
	SEWER MAIN
	COMMUNICATIONS / NBN
	DRAINAGE PIT AND PIPE
	SEWER BDY KIT BOX / SEWER MAINTENANCE SHAFT
	ELECTRICAL STRUCTURE / STREET LIGHT
	NBN CONDUIT
	WATER METER / RECYCLED WATER METER

EASEMENT:

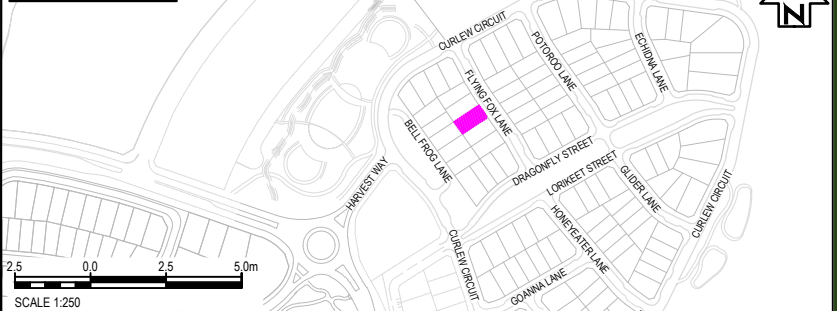
(A)	EASEMENT TO DRAIN WATER 1.5 WIDE
(B)	EASEMENT TO DRAIN WATER VARIABLE WIDTH
(C)	EASEMENT TO DRAIN WATER 2 WIDE
(D)	EASEMENT FOR SUPPORT AND MAINTENANCE 0.5 WIDE
(E)	EASEMENT FOR PADMOUNT SUBSTATION 2.75 WIDE
(F)	RESTRICTION ON THE USE OF LAND
(G)	RESTRICTION ON THE USE OF LAND
(S)	EASEMENT FOR ACCESS MAINTENANCE AND REPAIRS 0.9 WIDE

NOTES:

- THE DIMENSIONS, AREAS, EASEMENTS & OTHER DETAILS SHOWN ON THIS PLAN ARE SUBJECT TO FINAL APPROVALS OF COUNCIL & SERVICING AUTHORITIES.
- PURCHASERS SHOULD REFER TO THE REGISTERED PLAN OF SUBDIVISION FOR FINAL DIMENSIONS & OTHER DETAILS.
- PURCHASERS SHOULD EXAMINE THE FULL RANGE OF EASEMENTS & RESTRICTIONS SET OUT IN THE 88B INSTRUMENT ACCOMPANYING THE PLAN OF SUBDIVISION.



LOCALITY PLAN



LOT No.	2014	DATE	08.04.26	SCALE	1 : 250	SIZE	A4	REV	A
TITLE		STATUS							
LOT DISCLOSURE PLAN		ISSUED FOR INFORMATION							

DISCLAIMER

THIS SALES PLAN IS FOR GENERAL INFORMATION PURPOSES ONLY AND IS SUBJECT TO STATUTORY AND LEGAL REQUIREMENTS AND APPROVALS. NO WARRANTY OR REPRESENTATION IS GIVEN AS TO ITS ACCURACY OR COMPLETENESS. TO THE EXTENT PERMITTED BY LAW, LANDCOM (INCLUDING ITS AGENTS AND EMPLOYEES) DISCLAIMS ANY LIABILITY WHATSOEVER IN CONNECTION WITH, RELIANCE UPON OR THE USE OF THIS DOCUMENT.

PANORAMA

LEGEND:

	LOT BOUNDARY
	SURFACE CONTOUR (0.5m INTERVAL)
	KERB
	EASEMENT
	RETAINING WALL
	DRIVEWAY LOCATION
	FOOTPATH
	DENOTES LOT AFFECTED BY FILL
	APZ- ASSET PROTECTION ZONE LINE
	BAL 29
	BAL19
	BAL12.5
	APZ AFFECTED LOTS
	BAL 29 CONSTRUCTION
	ACOUSTIC TREATMENT CATEGORY 1
	ACOUSTIC TREATMENT CATEGORY 2
	INFILTRATION SWALE
	STREET TREE

SERVICES:

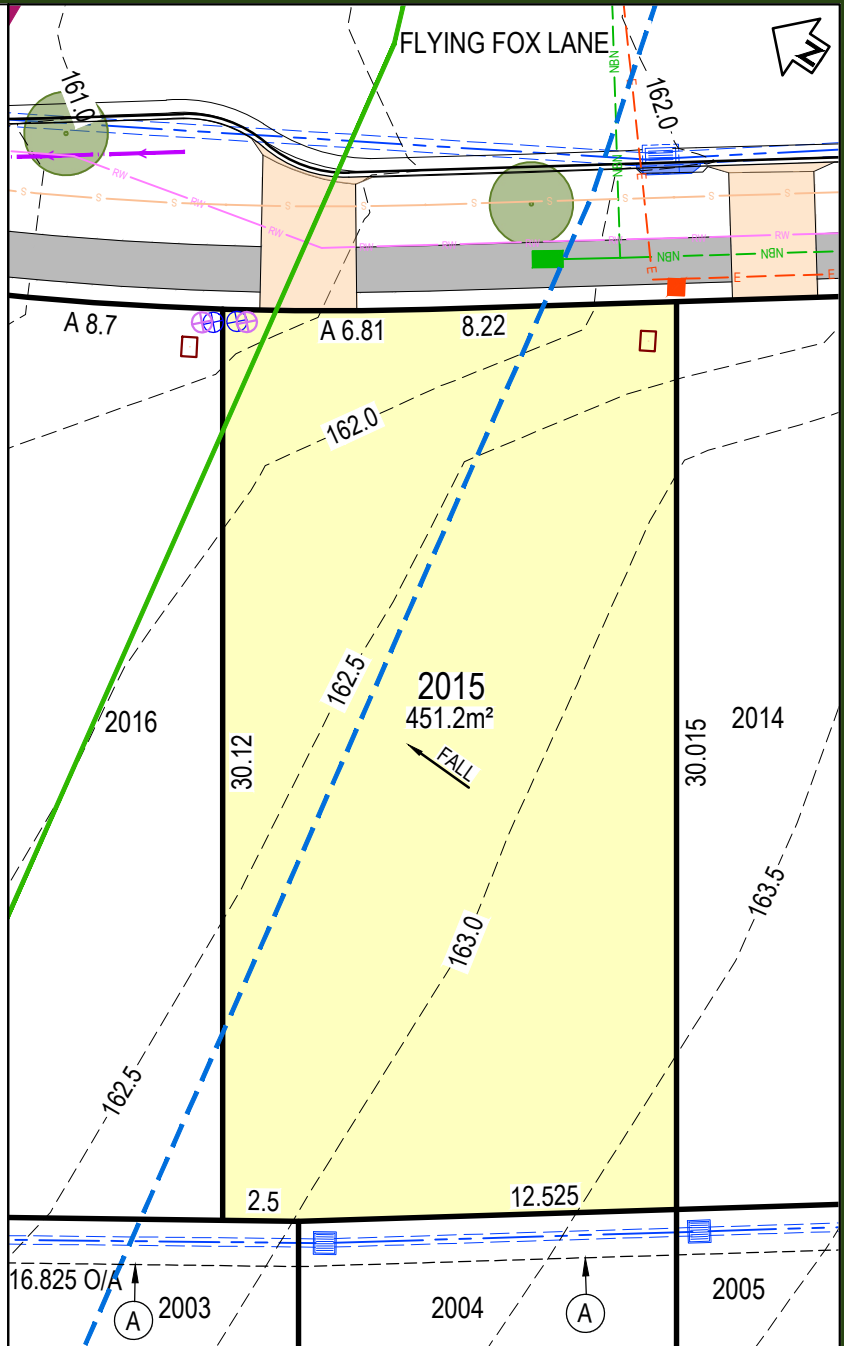
	POTABLE WATER MAIN
	RECYCLED WATER
	ELECTRICAL LINE
	SEWER MAIN
	COMMUNICATIONS / NBN
	DRAINAGE PIT AND PIPE
	SEWER BDY KIT BOX / SEWER MAINTENANCE SHAFT
	ELECTRICAL STRUCTURE / STREET LIGHT
	NBN CONDUIT
	WATER METER / RECYCLED WATER METER

EASEMENT:

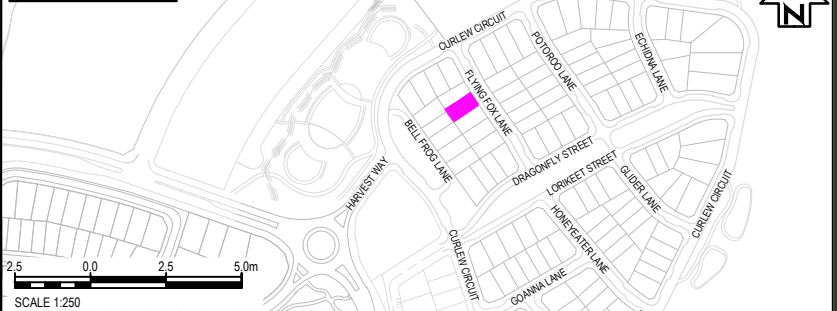
- (A) EASEMENT TO DRAIN WATER 1.5 WIDE
- (B) EASEMENT TO DRAIN WATER VARIABLE WIDTH
- (C) EASEMENT TO DRAIN WATER 2 WIDE
- (D) EASEMENT FOR SUPPORT AND MAINTENANCE 0.5 WIDE
- (E) EASEMENT FOR PADMOUNT SUBSTATION 2.75 WIDE
- (F) RESTRICTION ON THE USE OF LAND
- (G) RESTRICTION ON THE USE OF LAND
- (S) EASEMENT FOR ACCESS MAINTENANCE AND REPAIRS 0.9 WIDE

NOTES:

- THE DIMENSIONS, AREAS, EASEMENTS & OTHER DETAILS SHOWN ON THIS PLAN ARE SUBJECT TO FINAL APPROVALS OF COUNCIL & SERVICING AUTHORITIES.
- PURCHASERS SHOULD REFER TO THE REGISTERED PLAN OF SUBDIVISION FOR FINAL DIMENSIONS & OTHER DETAILS.
- PURCHASERS SHOULD EXAMINE THE FULL RANGE OF EASEMENTS & RESTRICTIONS SET OUT IN THE 88B INSTRUMENT ACCOMPANYING THE PLAN OF SUBDIVISION.



LOCALITY PLAN



LOT No.	2015	DATE	08.04.26	SCALE	1 : 250	SIZE	A4	REV	A
TITLE	LOT DISCLOSURE PLAN		STATUS	ISSUED FOR INFORMATION					

DISCLAIMER

THIS SALES PLAN IS FOR GENERAL INFORMATION PURPOSES ONLY AND IS SUBJECT TO STATUTORY AND LEGAL REQUIREMENTS AND APPROVALS. NO WARRANTY OR REPRESENTATION IS GIVEN AS TO ITS ACCURACY OR COMPLETENESS. TO THE EXTENT PERMITTED BY LAW, LANDCOM (INCLUDING ITS AGENTS AND EMPLOYEES) DISCLAIMS ANY LIABILITY WHATSOEVER IN CONNECTION WITH, RELIANCE UPON OR THE USE OF THIS DOCUMENT.

PANORAMA

LEGEND:

	LOT BOUNDARY
	SURFACE CONTOUR (0.5m INTERVAL)
	KERB
	EASEMENT
	RETAINING WALL
	DRIVEWAY LOCATION
	FOOTPATH
	DENOTES LOT AFFECTED BY FILL
	APZ- ASSET PROTECTION ZONE LINE
	BAL 29
	BAL19
	BAL12.5
	APZ AFFECTED LOTS
	BAL 29 CONSTRUCTION
	ACOUSTIC TREATMENT CATEGORY 1
	ACOUSTIC TREATMENT CATEGORY 2
	INFILTRATION SWALE
	STREET TREE

SERVICES:

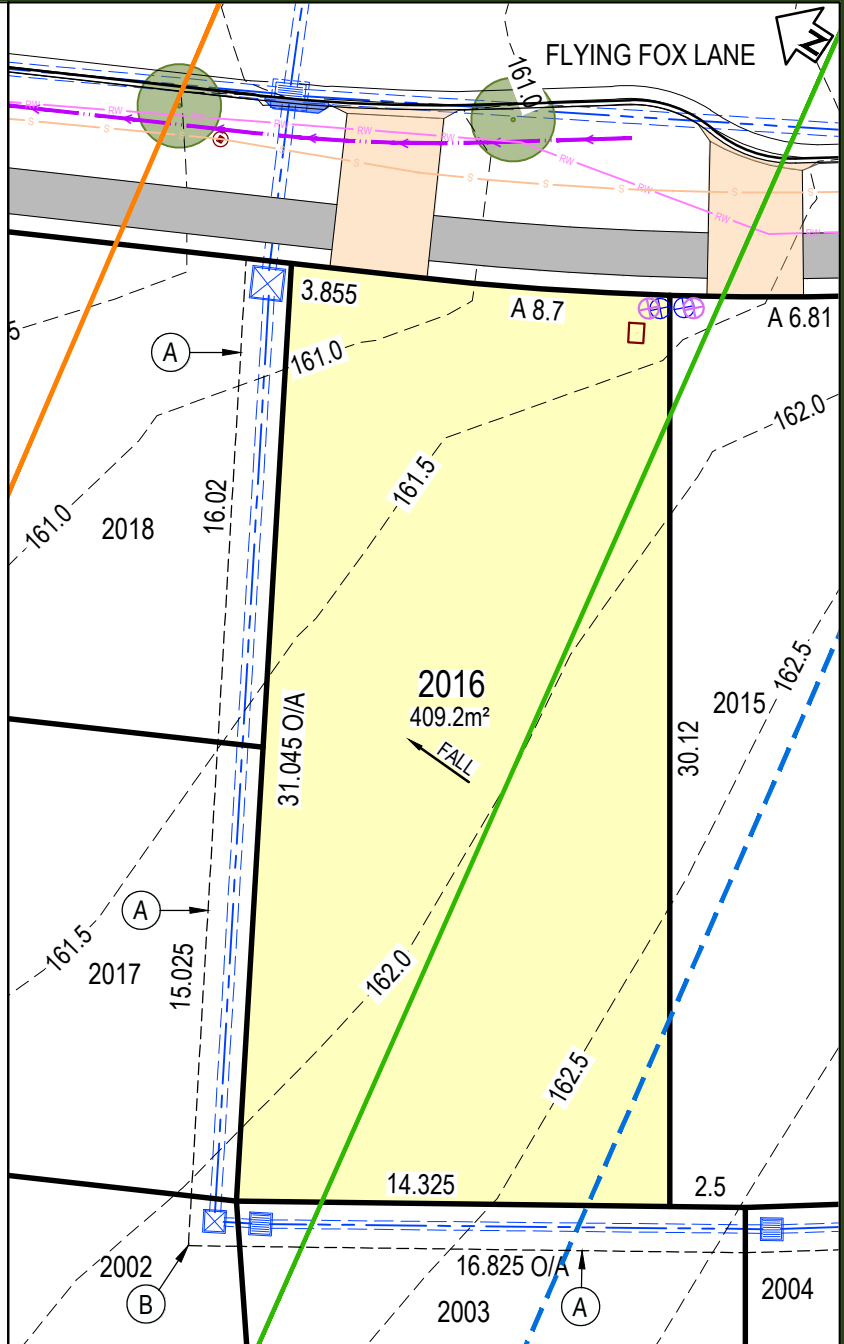
	POTABLE WATER MAIN
	RECYCLED WATER
	ELECTRICAL LINE
	SEWER MAIN
	COMMUNICATIONS / NBN
	DRAINAGE PIT AND PIPE
	SEWER BDY KIT BOX / SEWER MAINTENANCE SHAFT
	ELECTRICAL STRUCTURE / STREET LIGHT
	NBN CONDUIT
	WATER METER / RECYCLED WATER METER

EASEMENT:

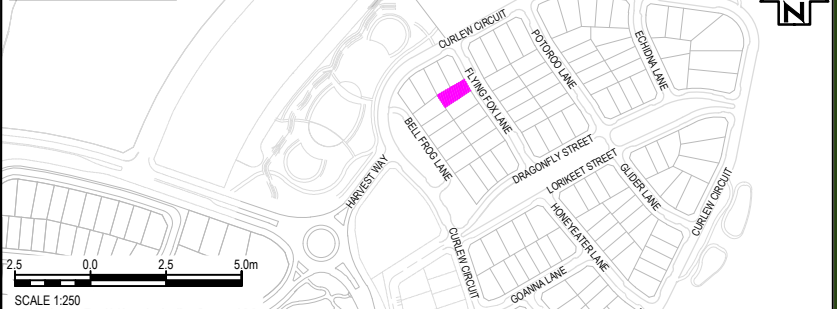
- (A) EASEMENT TO DRAIN WATER 1.5 WIDE
- (B) EASEMENT TO DRAIN WATER VARIABLE WIDTH
- (C) EASEMENT TO DRAIN WATER 2 WIDE
- (D) EASEMENT FOR SUPPORT AND MAINTENANCE 0.5 WIDE
- (E) EASEMENT FOR PADMOUNT SUBSTATION 2.75 WIDE
- (F) RESTRICTION ON THE USE OF LAND
- (G) RESTRICTION ON THE USE OF LAND
- (S) EASEMENT FOR ACCESS MAINTENANCE AND REPAIRS 0.9 WIDE

NOTES:

- THE DIMENSIONS, AREAS, EASEMENTS & OTHER DETAILS SHOWN ON THIS PLAN ARE SUBJECT TO FINAL APPROVALS OF COUNCIL & SERVICING AUTHORITIES.
- PURCHASERS SHOULD REFER TO THE REGISTERED PLAN OF SUBDIVISION FOR FINAL DIMENSIONS & OTHER DETAILS.
- PURCHASERS SHOULD EXAMINE THE FULL RANGE OF EASEMENTS & RESTRICTIONS SET OUT IN THE 88B INSTRUMENT ACCOMPANYING THE PLAN OF SUBDIVISION.



LOCALITY PLAN



LOT No.	2016	DATE	08.04.26	SCALE	1 : 250	SIZE	A4	REV	A
TITLE	LOT DISCLOSURE PLAN		STATUS	ISSUED FOR INFORMATION					

DISCLAIMER

THIS SALES PLAN IS FOR GENERAL INFORMATION PURPOSES ONLY AND IS SUBJECT TO STATUTORY AND LEGAL REQUIREMENTS AND APPROVALS. NO WARRANTY OR REPRESENTATION IS GIVEN AS TO ITS ACCURACY OR COMPLETENESS. TO THE EXTENT PERMITTED BY LAW, LANDCOM (INCLUDING ITS AGENTS AND EMPLOYEES) DISCLAIMS ANY LIABILITY WHATSOEVER IN CONNECTION WITH, RELIANCE UPON OR THE USE OF THIS DOCUMENT.

PANORAMA

LEGEND:

	LOT BOUNDARY
	SURFACE CONTOUR (0.5m INTERVAL)
	KERB
	EASEMENT
	RETAINING WALL
	DRIVEWAY LOCATION
	FOOTPATH
	DENOTES LOT AFFECTED BY FILL
	APZ- ASSET PROTECTION ZONE LINE
	BAL 29
	BAL19
	BAL12.5
	APZ AFFECTED LOTS
	BAL 29 CONSTRUCTION
	ACOUSTIC TREATMENT CATEGORY 1
	ACOUSTIC TREATMENT CATEGORY 2
	INFILTRATION SWALE
	STREET TREE

SERVICES:

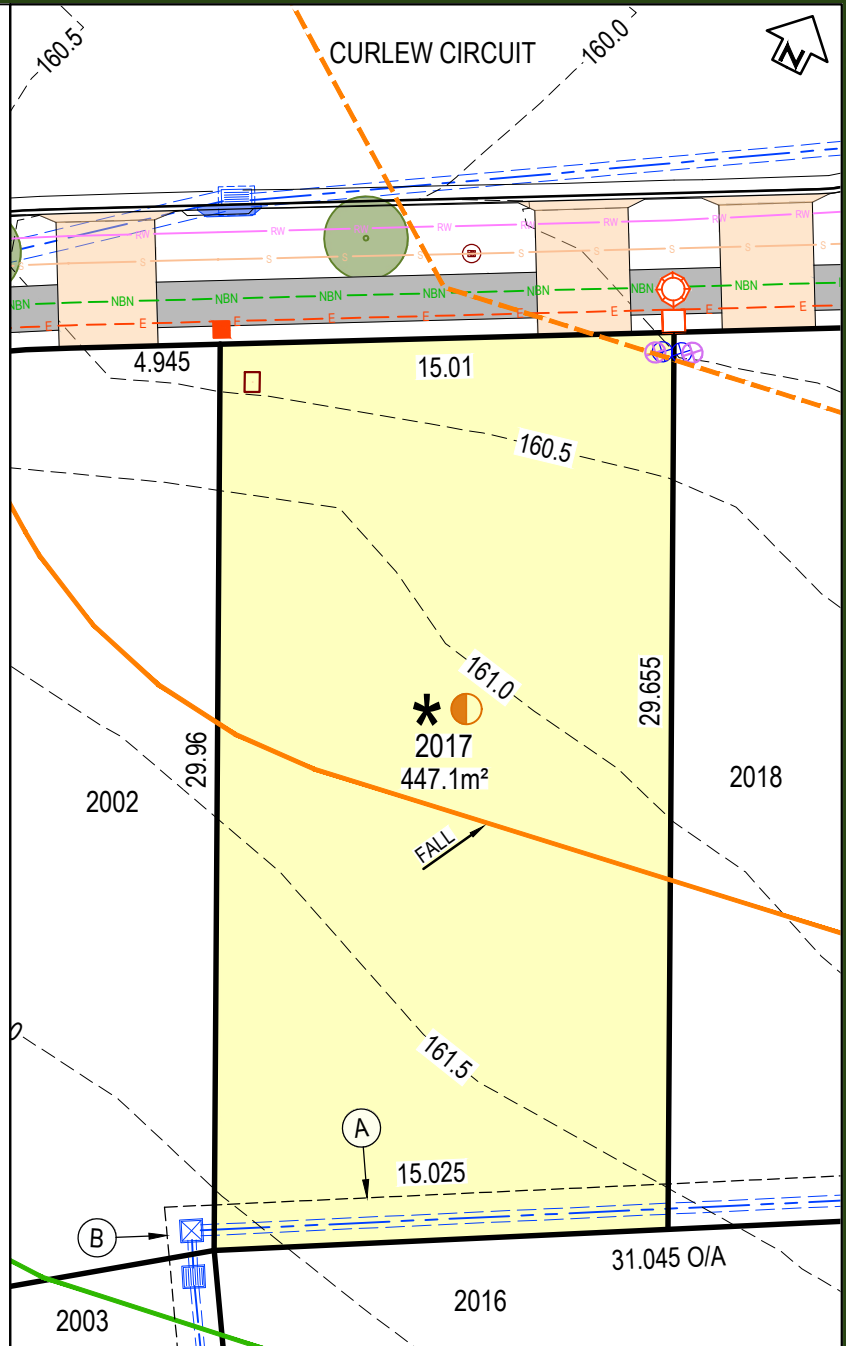
	POTABLE WATER MAIN
	RECYCLED WATER
	ELECTRICAL LINE
	SEWER MAIN
	COMMUNICATIONS / NBN
	DRAINAGE PIT AND PIPE
	SEWER BDY KIT BOX / SEWER MAINTENANCE SHAFT
	ELECTRICAL STRUCTURE / STREET LIGHT
	NBN CONDUIT
	WATER METER / RECYCLED WATER METER

EASEMENT:

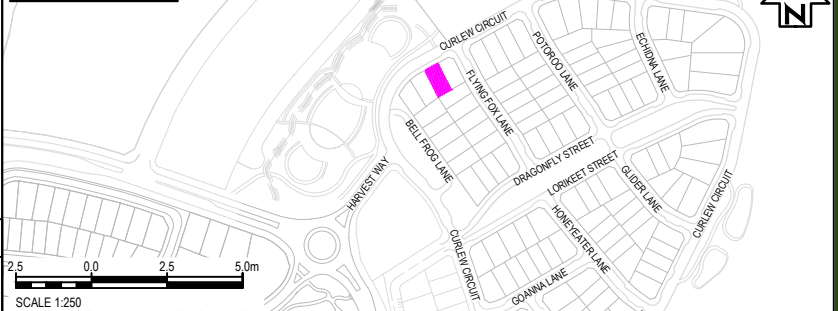
- (A) EASEMENT TO DRAIN WATER 1.5 WIDE
- (B) EASEMENT TO DRAIN WATER VARIABLE WIDTH
- (C) EASEMENT TO DRAIN WATER 2 WIDE
- (D) EASEMENT FOR SUPPORT AND MAINTENANCE 0.5 WIDE
- (E) EASEMENT FOR PADMOUNT SUBSTATION 2.75 WIDE
- (F) RESTRICTION ON THE USE OF LAND
- (G) RESTRICTION ON THE USE OF LAND
- (S) EASEMENT FOR ACCESS MAINTENANCE AND REPAIRS 0.9 WIDE

NOTES:

- THE DIMENSIONS, AREAS, EASEMENTS & OTHER DETAILS SHOWN ON THIS PLAN ARE SUBJECT TO FINAL APPROVALS OF COUNCIL & SERVICING AUTHORITIES.
- PURCHASERS SHOULD REFER TO THE REGISTERED PLAN OF SUBDIVISION FOR FINAL DIMENSIONS & OTHER DETAILS.
- PURCHASERS SHOULD EXAMINE THE FULL RANGE OF EASEMENTS & RESTRICTIONS SET OUT IN THE 88B INSTRUMENT ACCOMPANYING THE PLAN OF SUBDIVISION.



LOCALITY PLAN



LOT No.	2017	DATE	08.04.26	SCALE	1 : 250	SIZE	A4	REV	A
TITLE	LOT DISCLOSURE PLAN		STATUS ISSUED FOR INFORMATION						

DISCLAIMER

THIS SALES PLAN IS FOR GENERAL INFORMATION PURPOSES ONLY AND IS SUBJECT TO STATUTORY AND LEGAL REQUIREMENTS AND APPROVALS. NO WARRANTY OR REPRESENTATION IS GIVEN AS TO ITS ACCURACY OR COMPLETENESS. TO THE EXTENT PERMITTED BY LAW, LANDCOM (INCLUDING ITS AGENTS AND EMPLOYEES) DISCLAIMS ANY LIABILITY WHATSOEVER IN CONNECTION WITH, RELIANCE UPON OR THE USE OF THIS DOCUMENT.

PANORAMA

LEGEND:

	LOT BOUNDARY
	SURFACE CONTOUR (0.5m INTERVAL)
	KERB
	EASEMENT
	RETAINING WALL
	DRIVEWAY LOCATION
	FOOTPATH
	DENOTES LOT AFFECTED BY FILL
	APZ- ASSET PROTECTION ZONE LINE
	BAL 29
	BAL 19
	BAL 12.5
	APZ AFFECTED LOTS
	BAL 29 CONSTRUCTION
	ACOUSTIC TREATMENT CATEGORY 1
	ACOUSTIC TREATMENT CATEGORY 2
	INFILTRATION SWALE
	STREET TREE

SERVICES:

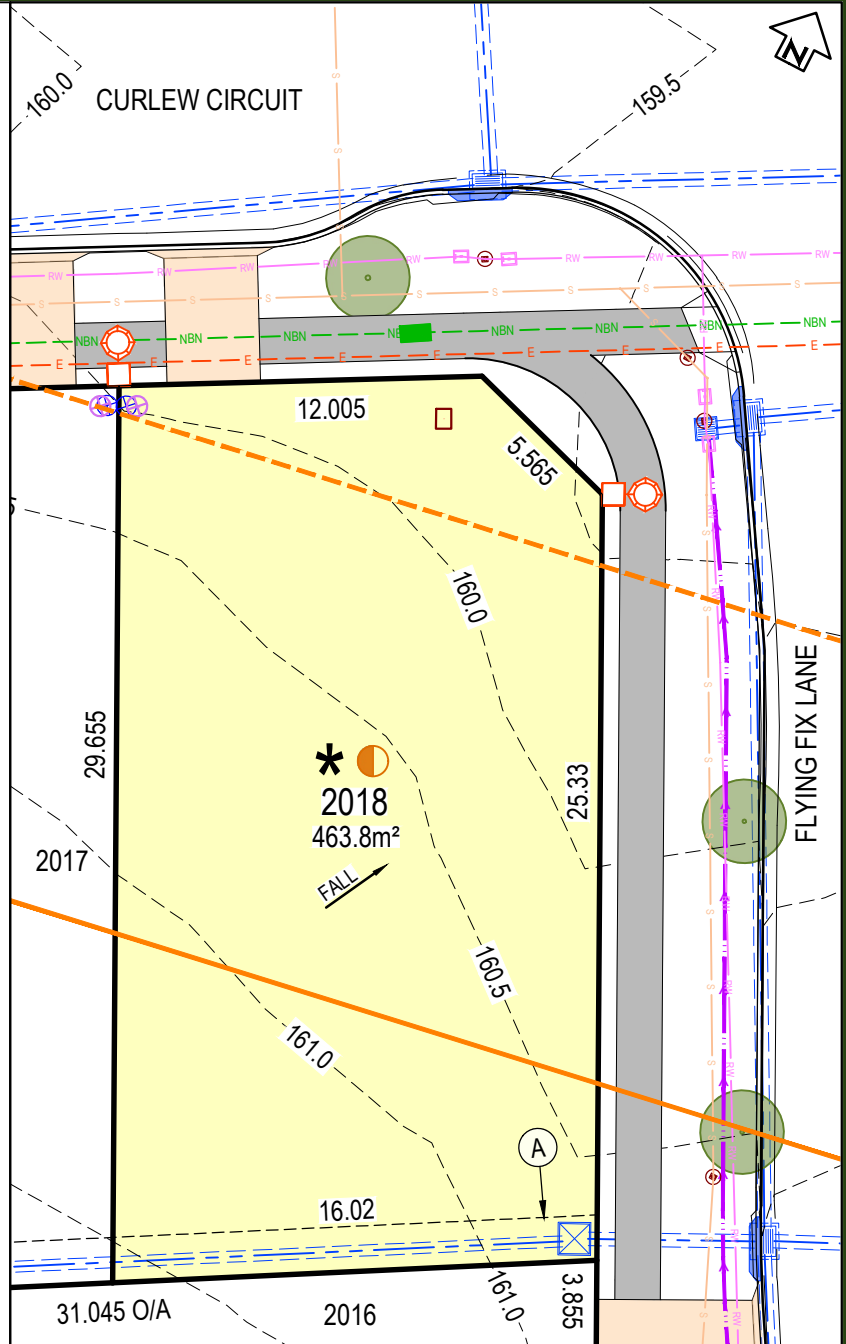
	POTABLE WATER MAIN
	RECYCLED WATER
	ELECTRICAL LINE
	SEWER MAIN
	COMMUNICATIONS / NBN
	DRAINAGE PIT AND PIPE
	SEWER BDY KIT BOX / SEWER MAINTENANCE SHAFT
	ELECTRICAL STRUCTURE / STREET LIGHT
	NBN CONDUIT
	WATER METER / RECYCLED WATER METER

EASEMENT:

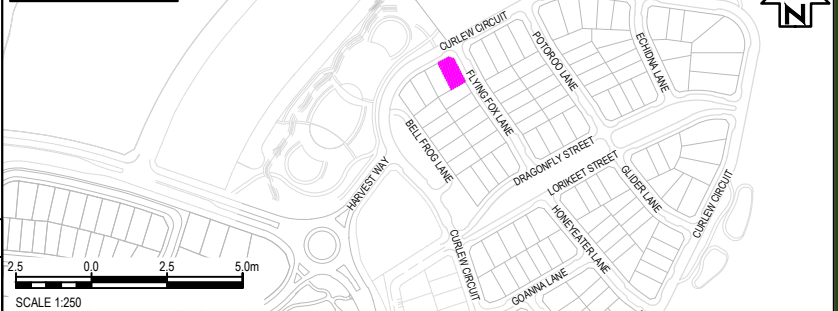
- (A) EASEMENT TO DRAIN WATER 1.5 WIDE
- (B) EASEMENT TO DRAIN WATER VARIABLE WIDTH
- (C) EASEMENT TO DRAIN WATER 2 WIDE
- (D) EASEMENT FOR SUPPORT AND MAINTENANCE 0.5 WIDE
- (E) EASEMENT FOR PADMOUNT SUBSTATION 2.75 WIDE
- (F) RESTRICTION ON THE USE OF LAND
- (G) RESTRICTION ON THE USE OF LAND
- (S) EASEMENT FOR ACCESS MAINTENANCE AND REPAIRS 0.9 WIDE

NOTES:

- THE DIMENSIONS, AREAS, EASEMENTS & OTHER DETAILS SHOWN ON THIS PLAN ARE SUBJECT TO FINAL APPROVALS OF COUNCIL & SERVICING AUTHORITIES.
- PURCHASERS SHOULD REFER TO THE REGISTERED PLAN OF SUBDIVISION FOR FINAL DIMENSIONS & OTHER DETAILS.
- PURCHASERS SHOULD EXAMINE THE FULL RANGE OF EASEMENTS & RESTRICTIONS SET OUT IN THE 88B INSTRUMENT ACCOMPANYING THE PLAN OF SUBDIVISION.



LOCALITY PLAN



LOT No.	2018	DATE	08.04.26	SCALE	1 : 250	SIZE	A4	REV	A
TITLE	LOT DISCLOSURE PLAN		STATUS	ISSUED FOR INFORMATION					

DISCLAIMER

THIS SALES PLAN IS FOR GENERAL INFORMATION PURPOSES ONLY AND IS SUBJECT TO STATUTORY AND LEGAL REQUIREMENTS AND APPROVALS. NO WARRANTY OR REPRESENTATION IS GIVEN AS TO ITS ACCURACY OR COMPLETENESS. TO THE EXTENT PERMITTED BY LAW, LANDCOM (INCLUDING ITS AGENTS AND EMPLOYEES) DISCLAIMS ANY LIABILITY WHATSOEVER IN CONNECTION WITH, RELIANCE UPON OR THE USE OF THIS DOCUMENT.

PANORAMA

LEGEND:

	LOT BOUNDARY
	SURFACE CONTOUR (0.5m INTERVAL)
	KERB
	EASEMENT
	RETAINING WALL
	DRIVEWAY LOCATION
	FOOTPATH
	DENOTES LOT AFFECTED BY FILL
	APZ- ASSET PROTECTION ZONE LINE
	BAL 29
	BAL 19
	BAL 12.5
	APZ AFFECTED LOTS
	BAL 29 CONSTRUCTION
	ACOUSTIC TREATMENT CATEGORY 1
	ACOUSTIC TREATMENT CATEGORY 2
	INFILTRATION SWALE
	STREET TREE

SERVICES:

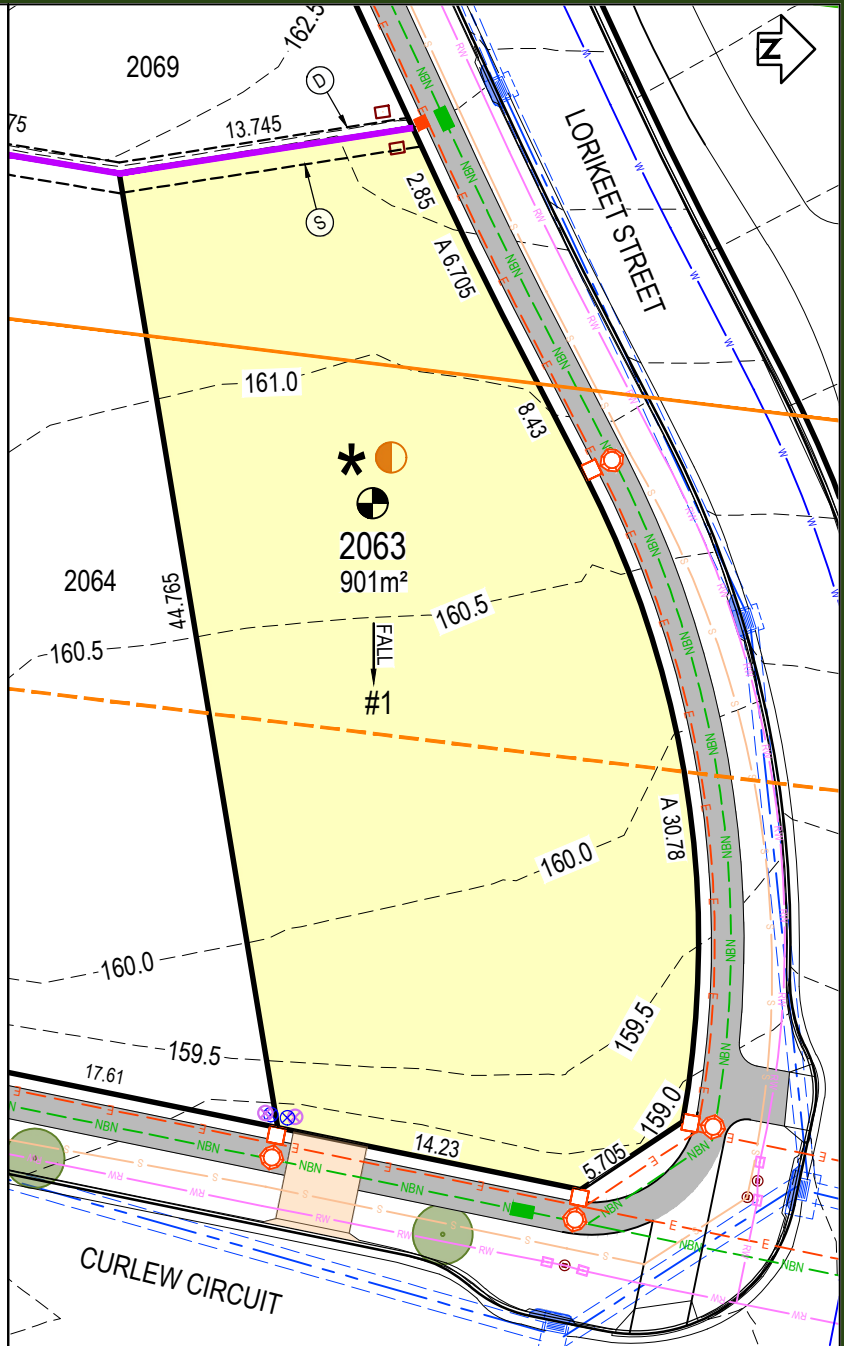
	POTABLE WATER MAIN
	RECYCLED WATER
	ELECTRICAL LINE
	SEWER MAIN
	COMMUNICATIONS / NBN
	DRAINAGE PIT AND PIPE
	SEWER BDY KIT BOX / SEWER MAINTENANCE SHAFT
	ELECTRICAL STRUCTURE / STREET LIGHT
	NBN CONDUIT
	WATER METER / RECYCLED WATER METER

EASEMENT:

- (A) EASEMENT TO DRAIN WATER 1.5 WIDE
- (B) EASEMENT TO DRAIN WATER VARIABLE WIDTH
- (C) EASEMENT TO DRAIN WATER 2 WIDE
- (D) EASEMENT FOR SUPPORT AND MAINTENANCE 0.5 WIDE
- (E) EASEMENT FOR PADMOUNT SUBSTATION 2.75 WIDE
- (F) RESTRICTION ON THE USE OF LAND
- (G) RESTRICTION ON THE USE OF LAND
- (S) EASEMENT FOR ACCESS MAINTENANCE AND REPAIRS 0.9 WIDE

NOTES:

- THE DIMENSIONS, AREAS, EASEMENTS & OTHER DETAILS SHOWN ON THIS PLAN ARE SUBJECT TO FINAL APPROVALS OF COUNCIL & SERVICING AUTHORITIES.
- PURCHASERS SHOULD REFER TO THE REGISTERED PLAN OF SUBDIVISION FOR FINAL DIMENSIONS & OTHER DETAILS.
- PURCHASERS SHOULD EXAMINE THE FULL RANGE OF EASEMENTS & RESTRICTIONS SET OUT IN THE 88B INSTRUMENT ACCOMPANYING THE PLAN OF SUBDIVISION.



LOCALITY PLAN



LOT No.	DATE	SCALE	SIZE	REV
2063	08.04.26	NTS	A4	A
TITLE		STATUS		
LOT DISCLOSURE PLAN		ISSUED FOR INFORMATION		

SCALE : NTS

DISCLAIMER

THIS SALES PLAN IS FOR GENERAL INFORMATION PURPOSES ONLY AND IS SUBJECT TO STATUTORY AND LEGAL REQUIREMENTS AND APPROVALS. NO WARRANTY OR REPRESENTATION IS GIVEN AS TO ITS ACCURACY OR COMPLETENESS. TO THE EXTENT PERMITTED BY LAW, LANDCOM (INCLUDING ITS AGENTS AND EMPLOYEES) DISCLAIMS ANY LIABILITY WHATSOEVER IN CONNECTION WITH, RELIANCE UPON OR THE USE OF THIS DOCUMENT.

PANORAMA

LEGEND:

	LOT BOUNDARY
	SURFACE CONTOUR (0.5m INTERVAL)
	KERB
	EASEMENT
	RETAINING WALL
	DRIVEWAY LOCATION
	FOOTPATH
	DENOTES LOT AFFECTED BY FILL
	APZ- ASSET PROTECTION ZONE LINE
	BAL 29
	BAL 19
	BAL 12.5
	APZ AFFECTED LOTS
	BAL 29 CONSTRUCTION
	ACOUSTIC TREATMENT CATEGORY 1
	ACOUSTIC TREATMENT CATEGORY 2
	INFILTRATION SWALE
	STREET TREE

SERVICES:

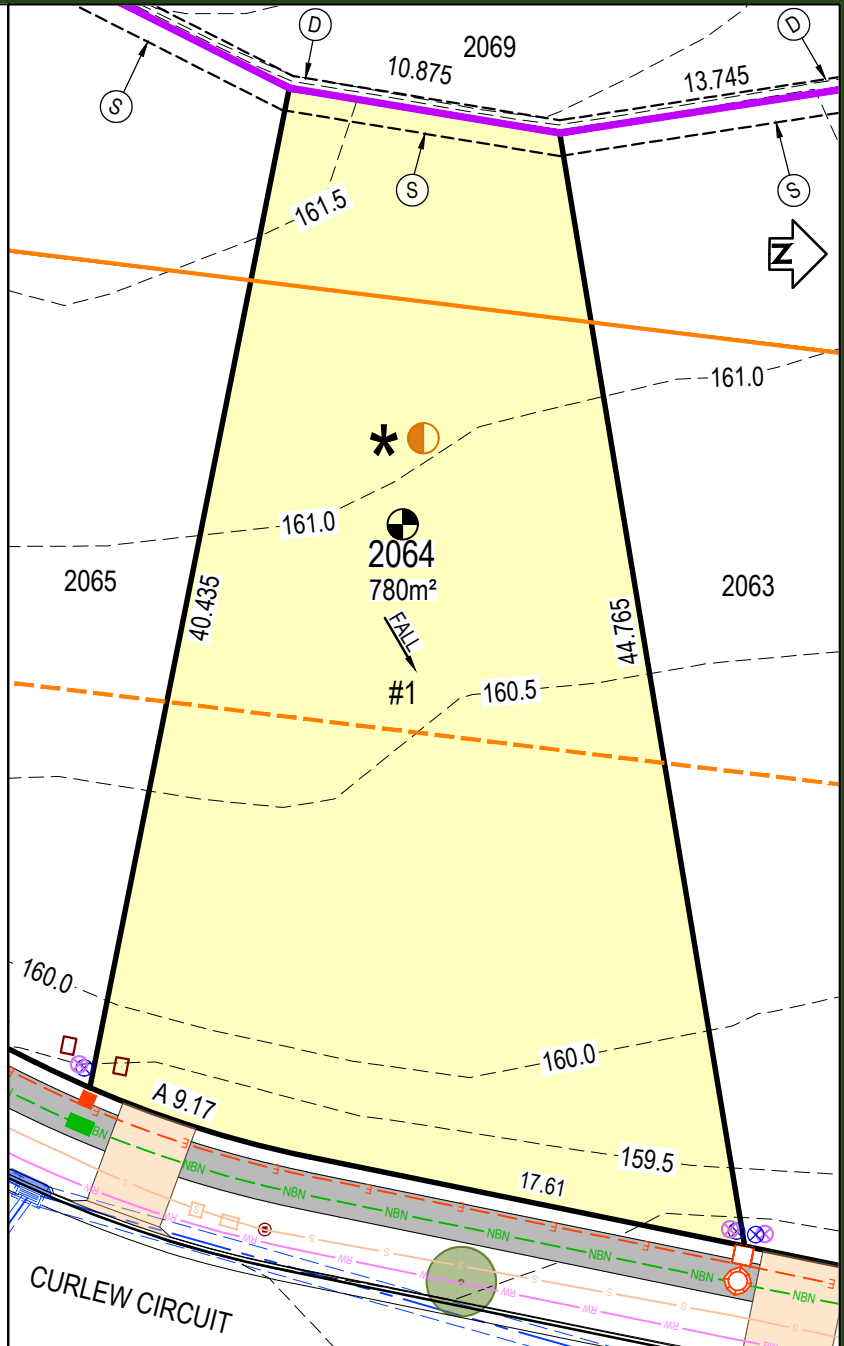
	POTABLE WATER MAIN
	RECYCLED WATER
	ELECTRICAL LINE
	SEWER MAIN
	COMMUNICATIONS / NBN
	DRAINAGE PIT AND PIPE
	SEWER BDY KIT BOX / SEWER MAINTENANCE SHAFT
	ELECTRICAL STRUCTURE / STREET LIGHT
	NBN CONDUIT
	WATER METER / RECYCLED WATER METER

EASEMENT:

- (A) EASEMENT TO DRAIN WATER 1.5 WIDE
- (B) EASEMENT TO DRAIN WATER VARIABLE WIDTH
- (C) EASEMENT TO DRAIN WATER 2 WIDE
- (D) EASEMENT FOR SUPPORT AND MAINTENANCE 0.5 WIDE
- (E) EASEMENT FOR PADMOUNT SUBSTATION 2.75 WIDE
- (F) RESTRICTION ON THE USE OF LAND
- (G) RESTRICTION ON THE USE OF LAND
- (S) EASEMENT FOR ACCESS MAINTENANCE AND REPAIRS 0.9 WIDE

NOTES:

- THE DIMENSIONS, AREAS, EASEMENTS & OTHER DETAILS SHOWN ON THIS PLAN ARE SUBJECT TO FINAL APPROVALS OF COUNCIL & SERVICING AUTHORITIES.
- PURCHASERS SHOULD REFER TO THE REGISTERED PLAN OF SUBDIVISION FOR FINAL DIMENSIONS & OTHER DETAILS.
- PURCHASERS SHOULD EXAMINE THE FULL RANGE OF EASEMENTS & RESTRICTIONS SET OUT IN THE 88B INSTRUMENT ACCOMPANYING THE PLAN OF SUBDIVISION.



LOT No.	DATE	SCALE	SIZE	REV
2064	08.04.26	NTS	A4	A
TITLE		STATUS		
LOT DISCLOSURE PLAN		ISSUED FOR INFORMATION		

SCALE : NTS

DISCLAIMER

THIS SALES PLAN IS FOR GENERAL INFORMATION PURPOSES ONLY AND IS SUBJECT TO STATUTORY AND LEGAL REQUIREMENTS AND APPROVALS. NO WARRANTY OR REPRESENTATION IS GIVEN AS TO ITS ACCURACY OR COMPLETENESS. TO THE EXTENT PERMITTED BY LAW, LANDCOM (INCLUDING ITS AGENTS AND EMPLOYEES) DISCLAIMS ANY LIABILITY WHATSOEVER IN CONNECTION WITH, RELIANCE UPON OR THE USE OF THIS DOCUMENT.

PANORAMA

LEGEND:

	LOT BOUNDARY
	SURFACE CONTOUR (0.5m INTERVAL)
	KERB
	EASEMENT
	RETAINING WALL
	DRIVEWAY LOCATION
	FOOTPATH
	DENOTES LOT AFFECTED BY FILL
	APZ- ASSET PROTECTION ZONE LINE
	BAL 29
	BAL 19
	BAL 12.5
	APZ AFFECTED LOTS
	BAL 29 CONSTRUCTION
	ACOUSTIC TREATMENT CATEGORY 1
	ACOUSTIC TREATMENT CATEGORY 2
	INFILTRATION SWALE
	STREET TREE

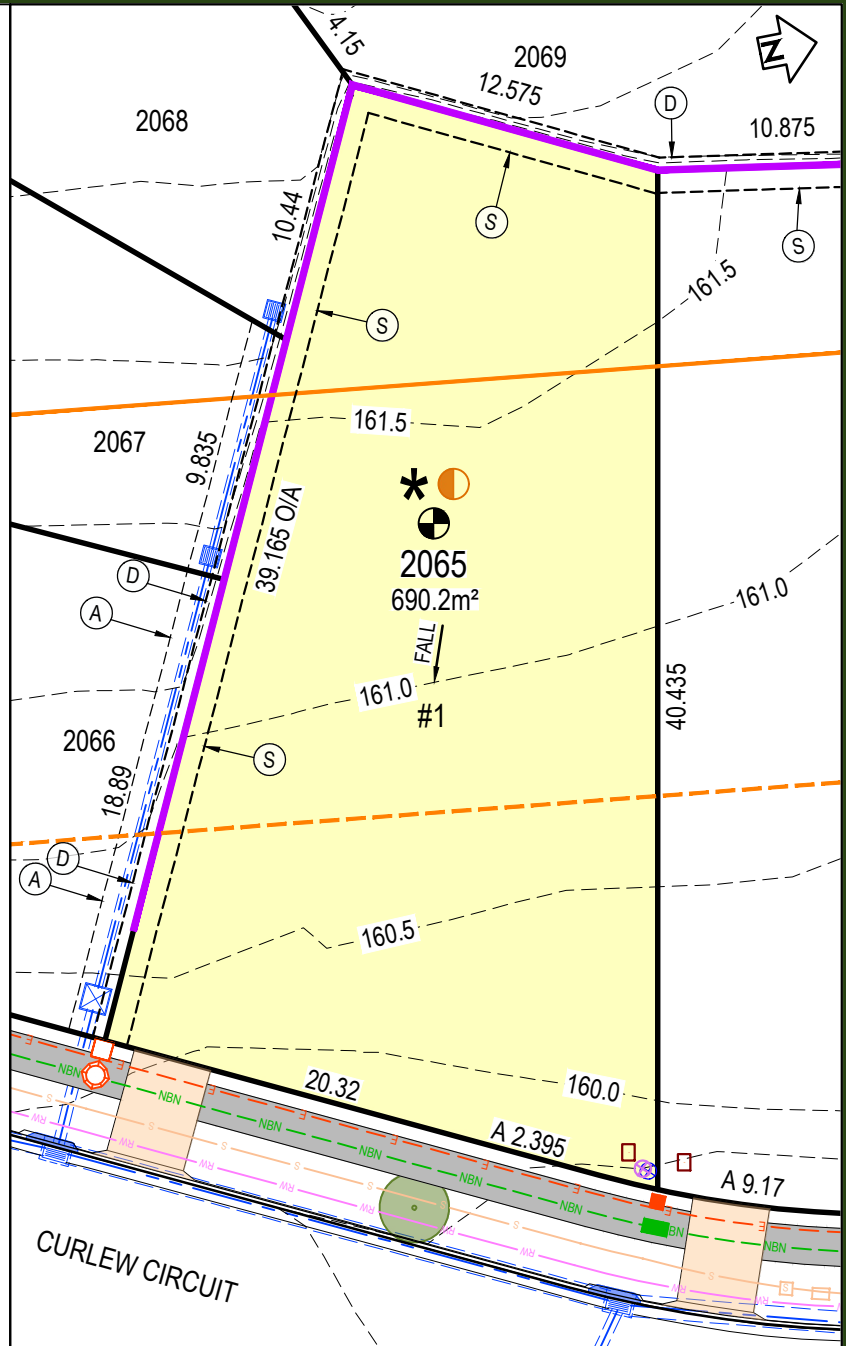
SERVICES:	
	POTABLE WATER MAIN
	RECYCLED WATER
	ELECTRICAL LINE
	SEWER MAIN
	COMMUNICATIONS / NBN
	DRAINAGE PIT AND PIPE
	SEWER BDY KIT BOX / SEWER MAINTENANCE SHAFT
	ELECTRICAL STRUCTURE / STREET LIGHT
	NBN CONDUIT
	WATER METER / RECYCLED WATER METER

EASEMENT:

- (A) EASEMENT TO DRAIN WATER 1.5 WIDE
- (B) EASEMENT TO DRAIN WATER VARIABLE WIDTH
- (C) EASEMENT TO DRAIN WATER 2 WIDE
- (D) EASEMENT FOR SUPPORT AND MAINTENANCE 0.5 WIDE
- (E) EASEMENT FOR PADMOUNT SUBSTATION 2.75 WIDE
- (F) RESTRICTION ON THE USE OF LAND
- (G) RESTRICTION ON THE USE OF LAND
- (S) EASEMENT FOR ACCESS MAINTENANCE AND REPAIRS 0.9 WIDE

NOTES:

- THE DIMENSIONS, AREAS, EASEMENTS & OTHER DETAILS SHOWN ON THIS PLAN ARE SUBJECT TO FINAL APPROVALS OF COUNCIL & SERVICING AUTHORITIES.
- PURCHASERS SHOULD REFER TO THE REGISTERED PLAN OF SUBDIVISION FOR FINAL DIMENSIONS & OTHER DETAILS.
- PURCHASERS SHOULD EXAMINE THE FULL RANGE OF EASEMENTS & RESTRICTIONS SET OUT IN THE 88B INSTRUMENT ACCOMPANYING THE PLAN OF SUBDIVISION.



LOCALITY PLAN



LOT No.	DATE	SCALE	NTS	SIZE	REV
2065	08.04.26	NTS		A4	A
TITLE		STATUS			
LOT DISCLOSURE PLAN		ISSUED FOR INFORMATION			

SCALE : NTS

DISCLAIMER

THIS SALES PLAN IS FOR GENERAL INFORMATION PURPOSES ONLY AND IS SUBJECT TO STATUTORY AND LEGAL REQUIREMENTS AND APPROVALS. NO WARRANTY OR REPRESENTATION IS GIVEN AS TO ITS ACCURACY OR COMPLETENESS. TO THE EXTENT PERMITTED BY LAW, LANDCOM (INCLUDING ITS AGENTS AND EMPLOYEES) DISCLAIMS ANY LIABILITY WHATSOEVER IN CONNECTION WITH, RELIANCE UPON OR THE USE OF THIS DOCUMENT.

PANORAMA

LEGEND:

	LOT BOUNDARY
	SURFACE CONTOUR (0.5m INTERVAL)
	KERB
	EASEMENT
	RETAINING WALL
	DRIVEWAY LOCATION
	FOOTPATH
	DENOTES LOT AFFECTED BY FILL
	APZ- ASSET PROTECTION ZONE LINE
	BAL 29
	BAL19
	BAL12.5
	APZ AFFECTED LOTS
	BAL 29 CONSTRUCTION
	ACOUSTIC TREATMENT CATEGORY 1
	ACOUSTIC TREATMENT CATEGORY 2
	INFILTRATION SWALE
	STREET TREE

SERVICES:

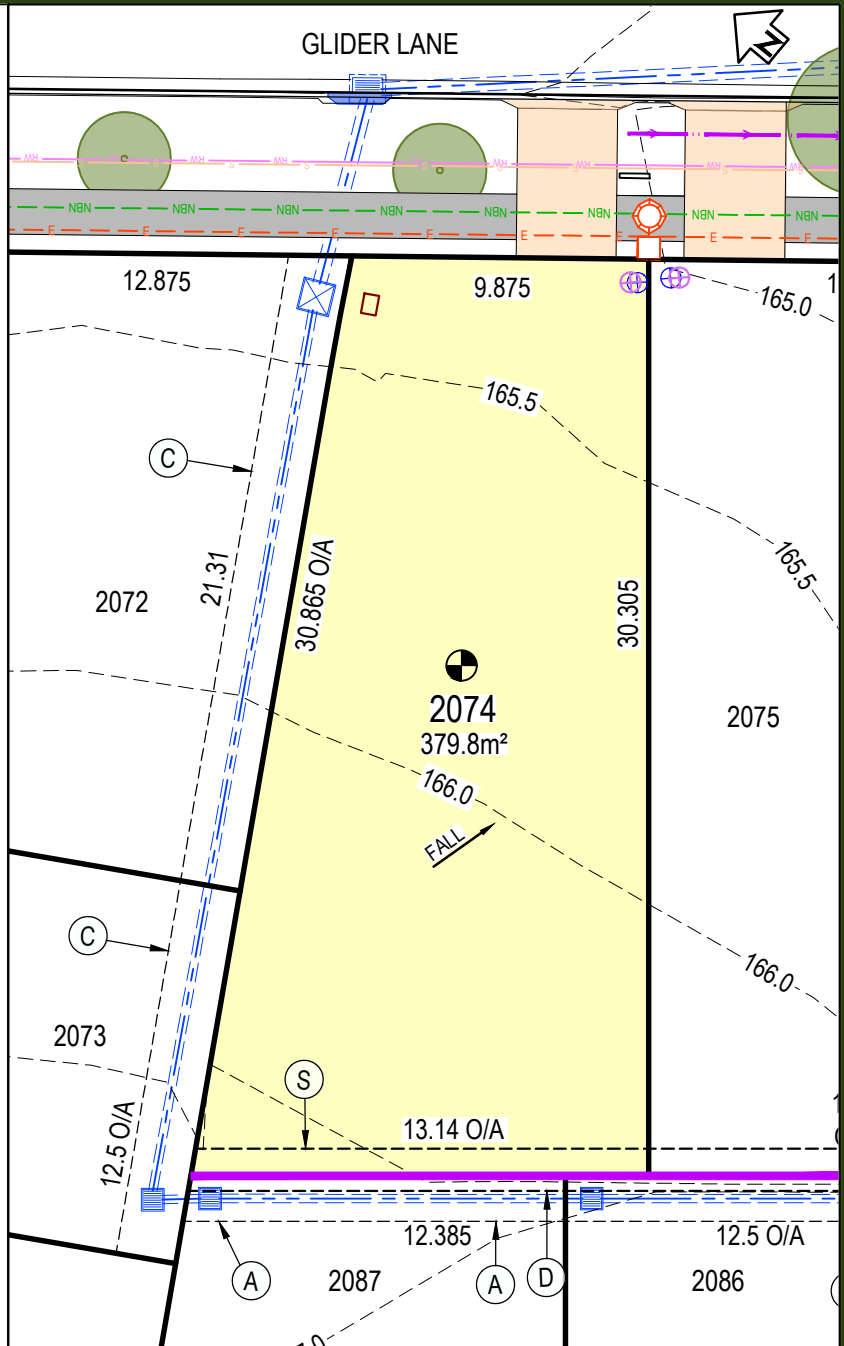
	POTABLE WATER MAIN
	RECYCLED WATER
	ELECTRICAL LINE
	SEWER MAIN
	COMMUNICATIONS / NBN
	DRAINAGE PIT AND PIPE
	SEWER BDY KIT BOX / SEWER MAINTENANCE SHAFT
	ELECTRICAL STRUCTURE / STREET LIGHT
	NBN CONDUIT
	WATER METER / RECYCLED WATER METER

EASEMENT:

- (A) EASEMENT TO DRAIN WATER 1.5 WIDE
- (B) EASEMENT TO DRAIN WATER VARIABLE WIDTH
- (C) EASEMENT TO DRAIN WATER 2 WIDE
- (D) EASEMENT FOR SUPPORT AND MAINTENANCE 0.5 WIDE
- (E) EASEMENT FOR PADMOUNT SUBSTATION 2.75 WIDE
- (F) RESTRICTION ON THE USE OF LAND
- (G) RESTRICTION ON THE USE OF LAND
- (S) EASEMENT FOR ACCESS MAINTENANCE AND REPAIRS 0.9 WIDE

NOTES:

- THE DIMENSIONS, AREAS, EASEMENTS & OTHER DETAILS SHOWN ON THIS PLAN ARE SUBJECT TO FINAL APPROVALS OF COUNCIL & SERVICING AUTHORITIES.
- PURCHASERS SHOULD REFER TO THE REGISTERED PLAN OF SUBDIVISION FOR FINAL DIMENSIONS & OTHER DETAILS.
- PURCHASERS SHOULD EXAMINE THE FULL RANGE OF EASEMENTS & RESTRICTIONS SET OUT IN THE 88B INSTRUMENT ACCOMPANYING THE PLAN OF SUBDIVISION.



LOCALITY PLAN



LOT No.	2074	DATE	08.04.26	SCALE	1 : 250	SIZE	A4	REV	A
TITLE	LOT DISCLOSURE PLAN		STATUS	ISSUED FOR INFORMATION					

DISCLAIMER

THIS SALES PLAN IS FOR GENERAL INFORMATION PURPOSES ONLY AND IS SUBJECT TO STATUTORY AND LEGAL REQUIREMENTS AND APPROVALS. NO WARRANTY OR REPRESENTATION IS GIVEN AS TO ITS ACCURACY OR COMPLETENESS. TO THE EXTENT PERMITTED BY LAW, LANDCOM (INCLUDING ITS AGENTS AND EMPLOYEES) DISCLAIMS ANY LIABILITY WHATSOEVER IN CONNECTION WITH, RELIANCE UPON OR THE USE OF THIS DOCUMENT.

PANORAMA

LEGEND:

	LOT BOUNDARY
	SURFACE CONTOUR (0.5m INTERVAL)
	KERB
	EASEMENT
	RETAINING WALL
	DRIVEWAY LOCATION
	FOOTPATH
	DENOTES LOT AFFECTED BY FILL
	APZ- ASSET PROTECTION ZONE LINE
	BAL 29
	BAL19
	BAL12.5
	APZ AFFECTED LOTS
	BAL 29 CONSTRUCTION
	ACOUSTIC TREATMENT CATEGORY 1
	ACOUSTIC TREATMENT CATEGORY 2
	INFILTRATION SWALE
	STREET TREE

SERVICES:

	POTABLE WATER MAIN
	RECYCLED WATER
	ELECTRICAL LINE
	SEWER MAIN
	COMMUNICATIONS / NBN
	DRAINAGE PIT AND PIPE
	SEWER BDY KIT BOX / SEWER MAINTENANCE SHAFT
	ELECTRICAL STRUCTURE / STREET LIGHT
	NBN CONDUIT
	WATER METER / RECYCLED WATER METER

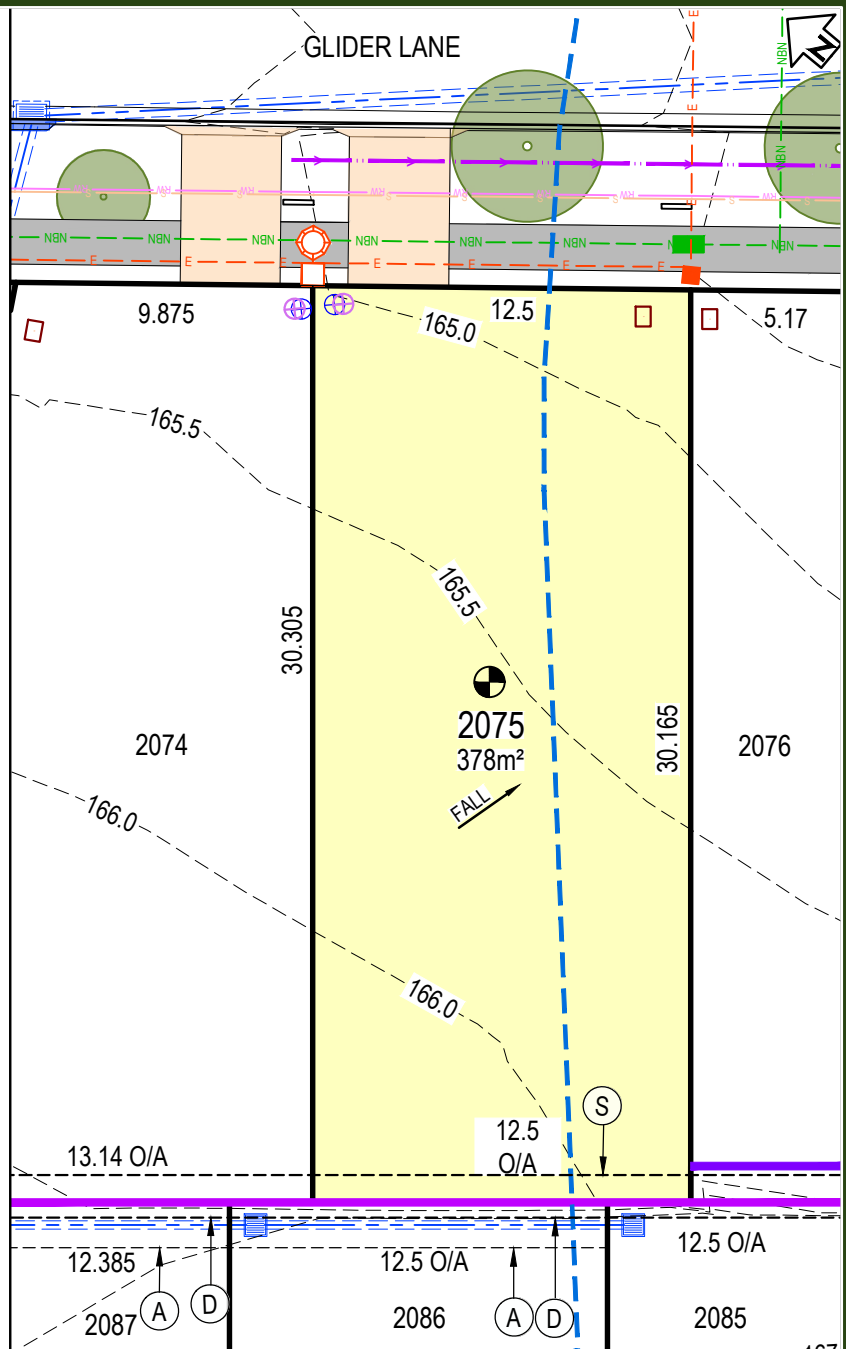
EASEMENT:

- (A) EASEMENT TO DRAIN WATER 1.5 WIDE
- (B) EASEMENT TO DRAIN WATER VARIABLE WIDTH
- (C) EASEMENT TO DRAIN WATER 2 WIDE
- (D) EASEMENT FOR SUPPORT AND MAINTENANCE 0.5 WIDE
- (E) EASEMENT FOR PADMOUNT SUBSTATION 2.75 WIDE
- (F) RESTRICTION ON THE USE OF LAND
- (G) RESTRICTION ON THE USE OF LAND
- (S) EASEMENT FOR ACCESS MAINTENANCE AND REPAIRS 0.9 WIDE

NOTES:

- THE DIMENSIONS, AREAS, EASEMENTS & OTHER DETAILS SHOWN ON THIS PLAN ARE SUBJECT TO FINAL APPROVALS OF COUNCIL & SERVICING AUTHORITIES.
- PURCHASERS SHOULD REFER TO THE REGISTERED PLAN OF SUBDIVISION FOR FINAL DIMENSIONS & OTHER DETAILS.
- PURCHASERS SHOULD EXAMINE THE FULL RANGE OF EASEMENTS & RESTRICTIONS SET OUT IN THE 88B INSTRUMENT ACCOMPANYING THE PLAN OF SUBDIVISION.

LOT No.	2075	DATE	08.04.26	SCALE	1 : 250	SIZE	A4	REV	A
TITLE		STATUS							
LOT DISCLOSURE PLAN		ISSUED FOR INFORMATION							



LOCALITY PLAN



DISCLAIMER

THIS SALES PLAN IS FOR GENERAL INFORMATION PURPOSES ONLY AND IS SUBJECT TO STATUTORY AND LEGAL REQUIREMENTS AND APPROVALS. NO WARRANTY OR REPRESENTATION IS GIVEN AS TO ITS ACCURACY OR COMPLETENESS. TO THE EXTENT PERMITTED BY LAW, LANDCOM (INCLUDING ITS AGENTS AND EMPLOYEES) DISCLAIMS ANY LIABILITY WHATSOEVER IN CONNECTION WITH, RELIANCE UPON OR THE USE OF THIS DOCUMENT.

PANORAMA

LEGEND:

	LOT BOUNDARY
	SURFACE CONTOUR (0.5m INTERVAL)
	KERB
	EASEMENT
	RETAINING WALL
	DRIVEWAY LOCATION
	FOOTPATH
	DENOTES LOT AFFECTED BY FILL
	APZ- ASSET PROTECTION ZONE LINE
	BAL 29
	BAL19
	BAL12.5
	APZ AFFECTED LOTS
	BAL 29 CONSTRUCTION
	ACOUSTIC TREATMENT CATEGORY 1
	ACOUSTIC TREATMENT CATEGORY 2
	INFILTRATION SWALE
	STREET TREE

SERVICES:

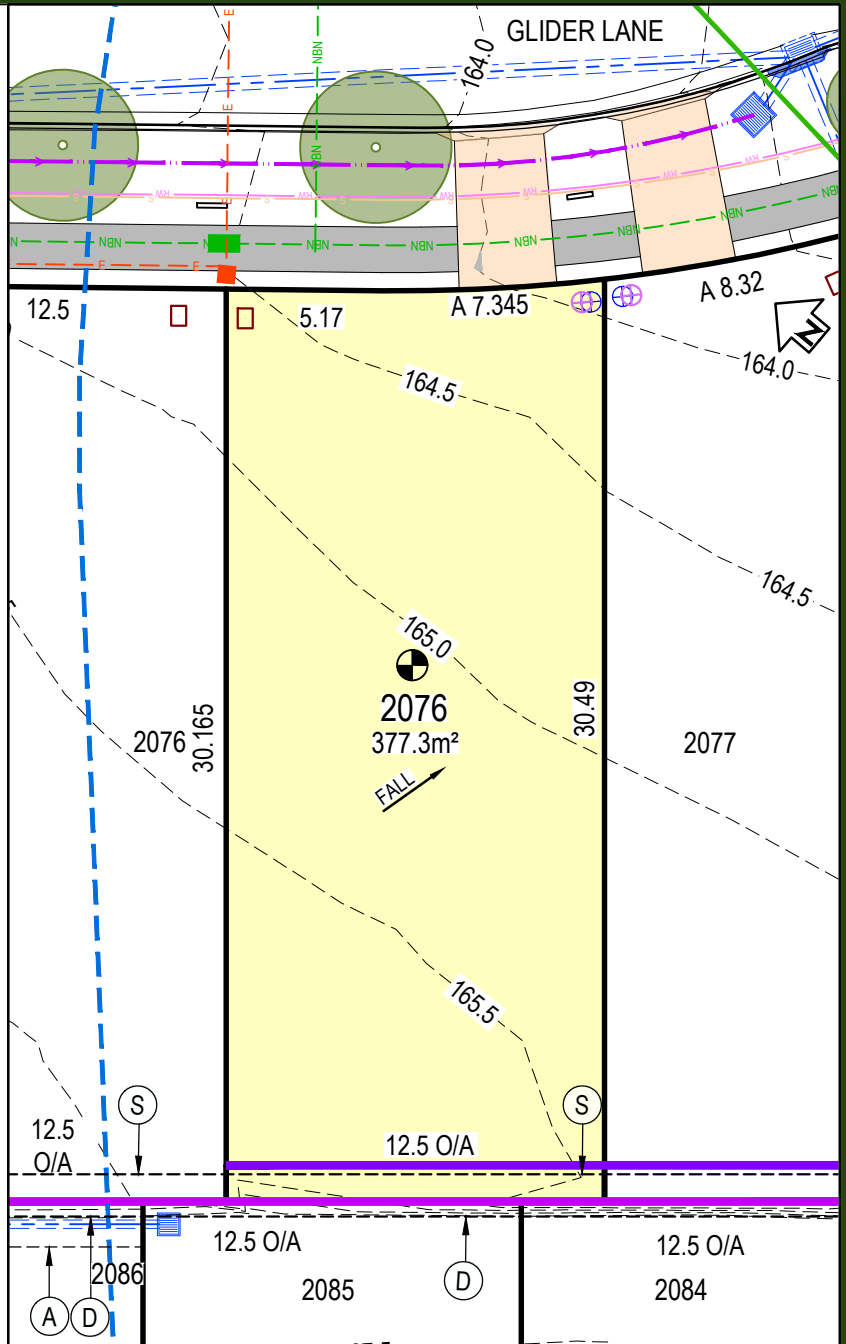
	POTABLE WATER MAIN
	RECYCLED WATER
	ELECTRICAL LINE
	SEWER MAIN
	COMMUNICATIONS / NBN
	DRAINAGE PIT AND PIPE
	SEWER BDY KIT BOX / SEWER MAINTENANCE SHAFT
	ELECTRICAL STRUCTURE / STREET LIGHT
	NBN CONDUIT
	WATER METER / RECYCLED WATER METER

EASEMENT:

- (A) EASEMENT TO DRAIN WATER 1.5 WIDE
- (B) EASEMENT TO DRAIN WATER VARIABLE WIDTH
- (C) EASEMENT TO DRAIN WATER 2 WIDE
- (D) EASEMENT FOR SUPPORT AND MAINTENANCE 0.5 WIDE
- (E) EASEMENT FOR PADMOUNT SUBSTATION 2.75 WIDE
- (F) RESTRICTION ON THE USE OF LAND
- (G) RESTRICTION ON THE USE OF LAND
- (S) EASEMENT FOR ACCESS MAINTENANCE AND REPAIRS 0.9 WIDE

NOTES:

- THE DIMENSIONS, AREAS, EASEMENTS & OTHER DETAILS SHOWN ON THIS PLAN ARE SUBJECT TO FINAL APPROVALS OF COUNCIL & SERVICING AUTHORITIES.
- PURCHASERS SHOULD REFER TO THE REGISTERED PLAN OF SUBDIVISION FOR FINAL DIMENSIONS & OTHER DETAILS.
- PURCHASERS SHOULD EXAMINE THE FULL RANGE OF EASEMENTS & RESTRICTIONS SET OUT IN THE 88B INSTRUMENT ACCOMPANYING THE PLAN OF SUBDIVISION.



LOCALITY PLAN



LOT No.	2076	DATE	08.04.26	SCALE	1 : 250	SIZE	A4	REV	A
TITLE	LOT DISCLOSURE PLAN		STATUS ISSUED FOR INFORMATION						

DISCLAIMER

THIS SALES PLAN IS FOR GENERAL INFORMATION PURPOSES ONLY AND IS SUBJECT TO STATUTORY AND LEGAL REQUIREMENTS AND APPROVALS. NO WARRANTY OR REPRESENTATION IS GIVEN AS TO ITS ACCURACY OR COMPLETENESS. TO THE EXTENT PERMITTED BY LAW, LANDCOM (INCLUDING ITS AGENTS AND EMPLOYEES) DISCLAIMS ANY LIABILITY WHATSOEVER IN CONNECTION WITH, RELIANCE UPON OR THE USE OF THIS DOCUMENT.

PANORAMA

LEGEND:

	LOT BOUNDARY
	SURFACE CONTOUR (0.5m INTERVAL)
	KERB
	EASEMENT
	RETAINING WALL
	DRIVEWAY LOCATION
	FOOTPATH
	DENOTES LOT AFFECTED BY FILL
	APZ- ASSET PROTECTION ZONE LINE
	BAL 29
	BAL19
	BAL12.5
	APZ AFFECTED LOTS
	BAL 29 CONSTRUCTION
	ACOUSTIC TREATMENT CATEGORY 1
	ACOUSTIC TREATMENT CATEGORY 2
	INFILTRATION SWALE
	STREET TREE

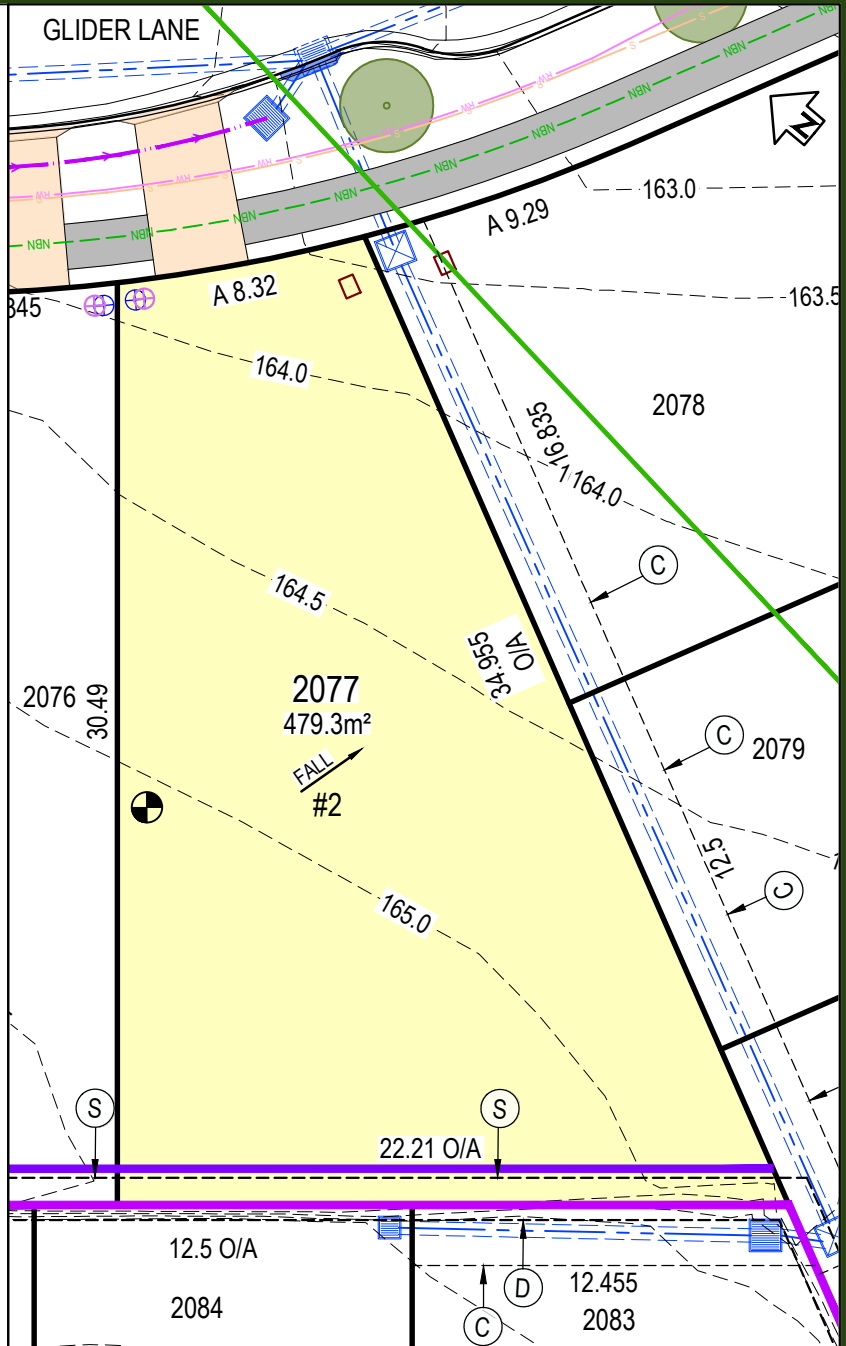
SERVICES:	
	POTABLE WATER MAIN
	RECYCLED WATER
	ELECTRICAL LINE
	SEWER MAIN
	COMMUNICATIONS / NBN
	DRAINAGE PIT AND PIPE
	SEWER BDY KIT BOX / SEWER MAINTENANCE SHAFT
	ELECTRICAL STRUCTURE / STREET LIGHT
	NBN CONDUIT
	WATER METER / RECYCLED WATER METER

EASEMENT:

- (A) EASEMENT TO DRAIN WATER 1.5 WIDE
- (B) EASEMENT TO DRAIN WATER VARIABLE WIDTH
- (C) EASEMENT TO DRAIN WATER 2 WIDE
- (D) EASEMENT FOR SUPPORT AND MAINTENANCE 0.5 WIDE
- (E) EASEMENT FOR PADMOUNT SUBSTATION 2.75 WIDE
- (F) RESTRICTION ON THE USE OF LAND
- (G) RESTRICTION ON THE USE OF LAND
- (S) EASEMENT FOR ACCESS MAINTENANCE AND REPAIRS 0.9 WIDE

NOTES:

- THE DIMENSIONS, AREAS, EASEMENTS & OTHER DETAILS SHOWN ON THIS PLAN ARE SUBJECT TO FINAL APPROVALS OF COUNCIL & SERVICING AUTHORITIES.
- PURCHASERS SHOULD REFER TO THE REGISTERED PLAN OF SUBDIVISION FOR FINAL DIMENSIONS & OTHER DETAILS.
- PURCHASERS SHOULD EXAMINE THE FULL RANGE OF EASEMENTS & RESTRICTIONS SET OUT IN THE 88B INSTRUMENT ACCOMPANYING THE PLAN OF SUBDIVISION.



LOCALITY PLAN



LOT No.	2077	DATE	08.04.26	SCALE	1 : 250	SIZE	A4	REV	A
TITLE	LOT DISCLOSURE PLAN		STATUS ISSUED FOR INFORMATION						

DISCLAIMER

THIS SALES PLAN IS FOR GENERAL INFORMATION PURPOSES ONLY AND IS SUBJECT TO STATUTORY AND LEGAL REQUIREMENTS AND APPROVALS. NO WARRANTY OR REPRESENTATION IS GIVEN AS TO ITS ACCURACY OR COMPLETENESS. TO THE EXTENT PERMITTED BY LAW, LANDCOM (INCLUDING ITS AGENTS AND EMPLOYEES) DISCLAIMS ANY LIABILITY WHATSOEVER IN CONNECTION WITH, RELIANCE UPON OR THE USE OF THIS DOCUMENT.

PANORAMA

LEGEND:

	LOT BOUNDARY
	SURFACE CONTOUR (0.5m INTERVAL)
	KERB
	EASEMENT
	RETAINING WALL
	DRIVEWAY LOCATION
	FOOTPATH
	DENOTES LOT AFFECTED BY FILL
	APZ- ASSET PROTECTION ZONE LINE
	BAL 29
	BAL 19
	BAL 12.5
	APZ AFFECTED LOTS
	BAL 29 CONSTRUCTION
	ACOUSTIC TREATMENT CATEGORY 1
	ACOUSTIC TREATMENT CATEGORY 2
	INFILTRATION SWALE
	STREET TREE

SERVICES:

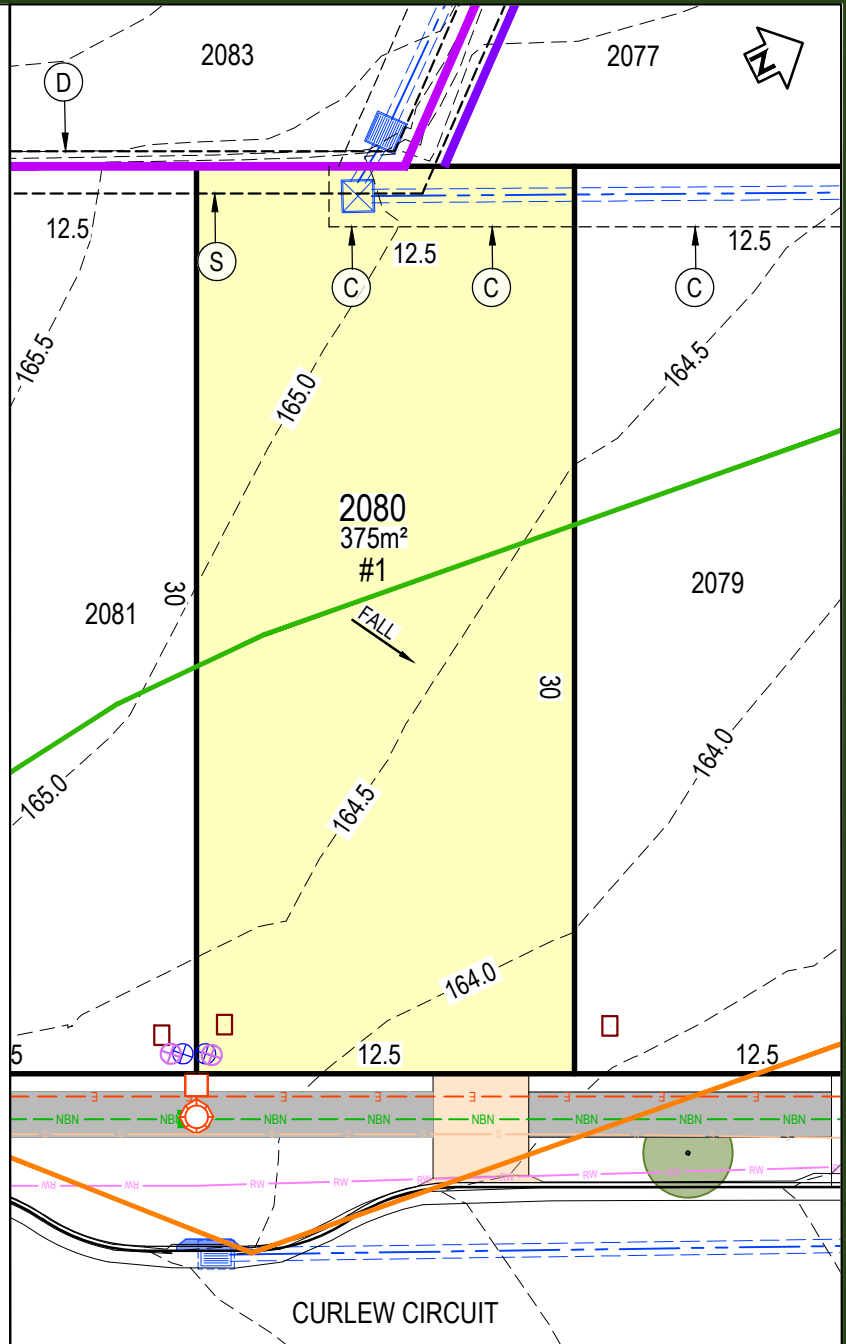
	POTABLE WATER MAIN
	RECYCLED WATER
	ELECTRICAL LINE
	SEWER MAIN
	COMMUNICATIONS / NBN
	DRAINAGE PIT AND PIPE
	SEWER BDY KIT BOX / SEWER MAINTENANCE SHAFT
	ELECTRICAL STRUCTURE / STREET LIGHT
	NBN CONDUIT
	WATER METER / RECYCLED WATER METER

EASEMENT:

- (A) EASEMENT TO DRAIN WATER 1.5 WIDE
- (B) EASEMENT TO DRAIN WATER VARIABLE WIDTH
- (C) EASEMENT TO DRAIN WATER 2 WIDE
- (D) EASEMENT FOR SUPPORT AND MAINTENANCE 0.5 WIDE
- (E) EASEMENT FOR PADMOUNT SUBSTATION 2.75 WIDE
- (F) RESTRICTION ON THE USE OF LAND
- (G) RESTRICTION ON THE USE OF LAND
- (S) EASEMENT FOR ACCESS MAINTENANCE AND REPAIRS 0.9 WIDE

NOTES:

- THE DIMENSIONS, AREAS, EASEMENTS & OTHER DETAILS SHOWN ON THIS PLAN ARE SUBJECT TO FINAL APPROVALS OF COUNCIL & SERVICING AUTHORITIES.
- PURCHASERS SHOULD REFER TO THE REGISTERED PLAN OF SUBDIVISION FOR FINAL DIMENSIONS & OTHER DETAILS.
- PURCHASERS SHOULD EXAMINE THE FULL RANGE OF EASEMENTS & RESTRICTIONS SET OUT IN THE 88B INSTRUMENT ACCOMPANYING THE PLAN OF SUBDIVISION.



LOCALITY PLAN



LOT No.	2080	DATE	08.04.26	SCALE	1 : 250	SIZE	A4	REV	A
TITLE	LOT DISCLOSURE PLAN		STATUS ISSUED FOR INFORMATION						

DISCLAIMER

THIS SALES PLAN IS FOR GENERAL INFORMATION PURPOSES ONLY AND IS SUBJECT TO STATUTORY AND LEGAL REQUIREMENTS AND APPROVALS. NO WARRANTY OR REPRESENTATION IS GIVEN AS TO ITS ACCURACY OR COMPLETENESS. TO THE EXTENT PERMITTED BY LAW, LANDCOM (INCLUDING ITS AGENTS AND EMPLOYEES) DISCLAIMS ANY LIABILITY WHATSOEVER IN CONNECTION WITH, RELIANCE UPON OR THE USE OF THIS DOCUMENT.

PANORAMA

LEGEND:

	LOT BOUNDARY
	SURFACE CONTOUR (0.5m INTERVAL)
	KERB
	EASEMENT
	RETAINING WALL
	DRIVEWAY LOCATION
	FOOTPATH
	DENOTES LOT AFFECTED BY FILL
	APZ- ASSET PROTECTION ZONE LINE
	BAL 29
	BAL 19
	BAL 12.5
	APZ AFFECTED LOTS
	BAL 29 CONSTRUCTION
	ACOUSTIC TREATMENT CATEGORY 1
	ACOUSTIC TREATMENT CATEGORY 2
	INFILTRATION SWALE
	STREET TREE

SERVICES:

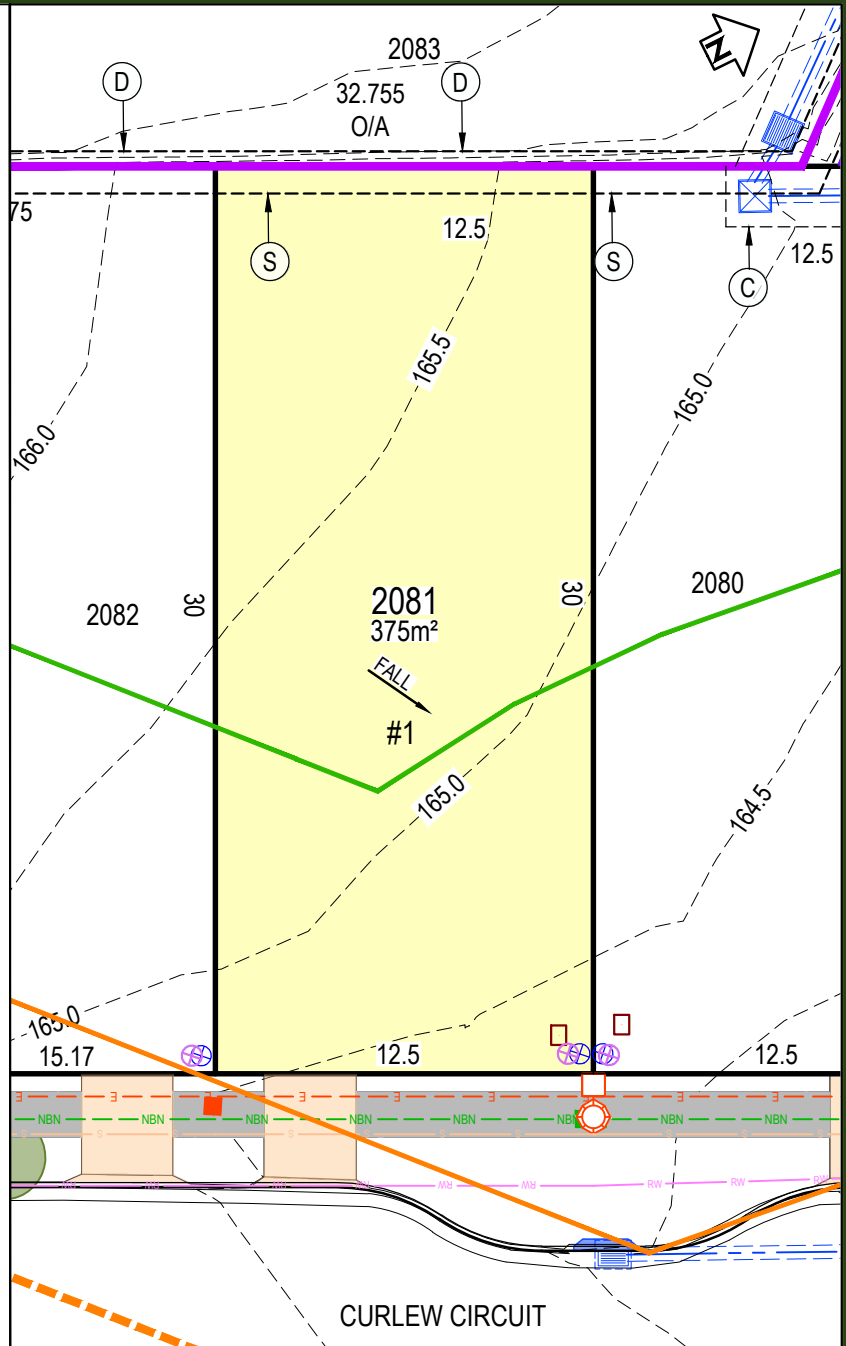
	POTABLE WATER MAIN
	RECYCLED WATER
	ELECTRICAL LINE
	SEWER MAIN
	COMMUNICATIONS / NBN
	DRAINAGE PIT AND PIPE
	SEWER BDY KIT BOX / SEWER MAINTENANCE SHAFT
	ELECTRICAL STRUCTURE / STREET LIGHT
	NBN CONDUIT
	WATER METER / RECYCLED WATER METER

EASEMENT:

- (A) EASEMENT TO DRAIN WATER 1.5 WIDE
- (B) EASEMENT TO DRAIN WATER VARIABLE WIDTH
- (C) EASEMENT TO DRAIN WATER 2 WIDE
- (D) EASEMENT FOR SUPPORT AND MAINTENANCE 0.5 WIDE
- (E) EASEMENT FOR PADMOUNT SUBSTATION 2.75 WIDE
- (F) RESTRICTION ON THE USE OF LAND
- (G) RESTRICTION ON THE USE OF LAND
- (S) EASEMENT FOR ACCESS MAINTENANCE AND REPAIRS 0.9 WIDE

NOTES:

- THE DIMENSIONS, AREAS, EASEMENTS & OTHER DETAILS SHOWN ON THIS PLAN ARE SUBJECT TO FINAL APPROVALS OF COUNCIL & SERVICING AUTHORITIES.
- PURCHASERS SHOULD REFER TO THE REGISTERED PLAN OF SUBDIVISION FOR FINAL DIMENSIONS & OTHER DETAILS.
- PURCHASERS SHOULD EXAMINE THE FULL RANGE OF EASEMENTS & RESTRICTIONS SET OUT IN THE 88B INSTRUMENT ACCOMPANYING THE PLAN OF SUBDIVISION.



LOCALITY PLAN



LOT No.	2081	DATE	08.04.26	SCALE	1 : 250	SIZE	A4	REV	A
TITLE		STATUS							
LOT DISCLOSURE PLAN		ISSUED FOR INFORMATION							



DISCLAIMER

THIS SALES PLAN IS FOR GENERAL INFORMATION PURPOSES ONLY AND IS SUBJECT TO STATUTORY AND LEGAL REQUIREMENTS AND APPROVALS. NO WARRANTY OR REPRESENTATION IS GIVEN AS TO ITS ACCURACY OR COMPLETENESS. TO THE EXTENT PERMITTED BY LAW, LANDCOM (INCLUDING ITS AGENTS AND EMPLOYEES) DISCLAIMS ANY LIABILITY WHATSOEVER IN CONNECTION WITH, RELIANCE UPON OR THE USE OF THIS DOCUMENT.

PANORAMA

LEGEND:

	LOT BOUNDARY
	SURFACE CONTOUR (0.5m INTERVAL)
	KERB
	EASEMENT
	RETAINING WALL
	DRIVEWAY LOCATION
	FOOTPATH
	DENOTES LOT AFFECTED BY FILL
	APZ- ASSET PROTECTION ZONE LINE
	BAL 29
	BAL 19
	BAL 12.5
	APZ AFFECTED LOTS
	BAL 29 CONSTRUCTION
	ACOUSTIC TREATMENT CATEGORY 1
	ACOUSTIC TREATMENT CATEGORY 2
	INFILTRATION SWALE
	STREET TREE

SERVICES:

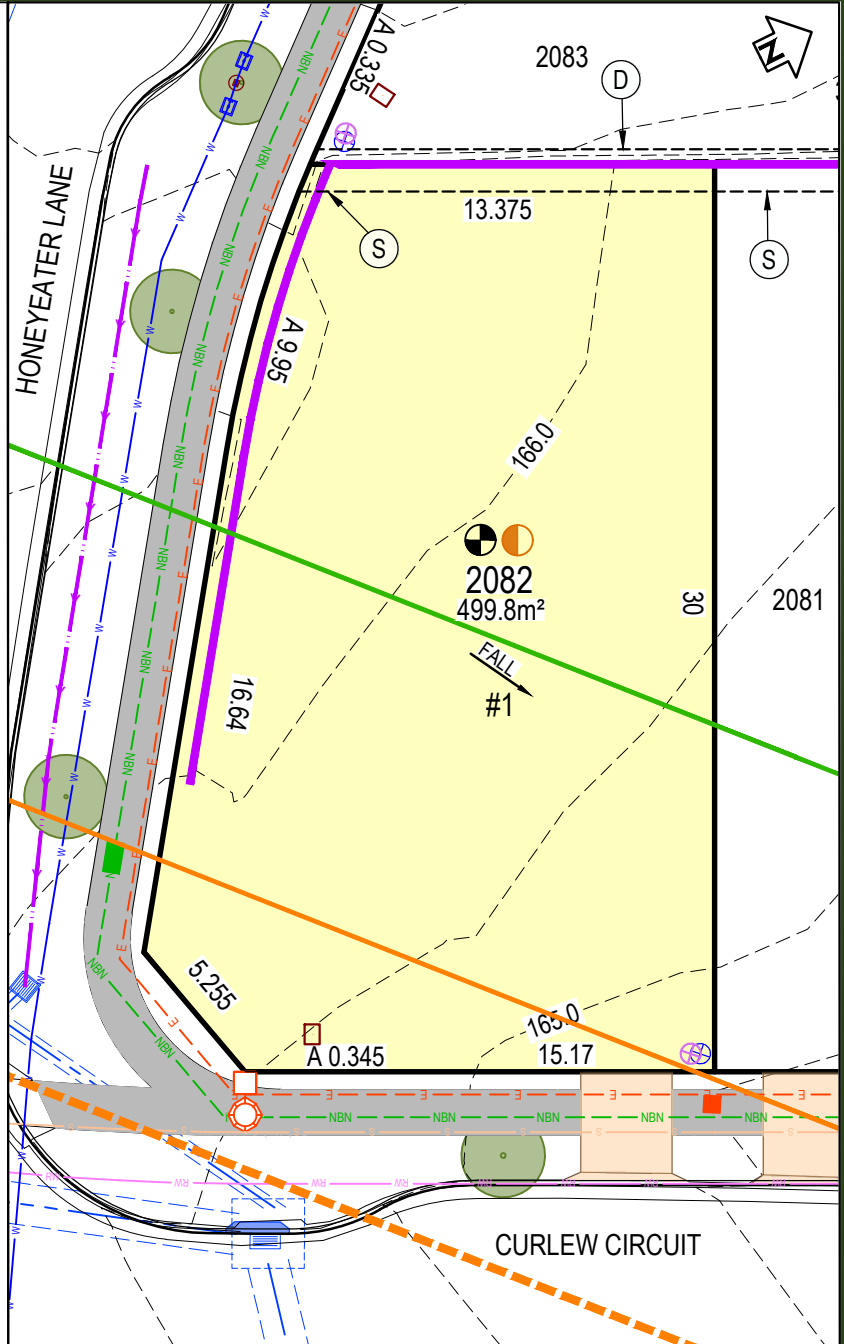
	POTABLE WATER MAIN
	RECYCLED WATER
	ELECTRICAL LINE
	SEWER MAIN
	COMMUNICATIONS / NBN
	DRAINAGE PIT AND PIPE
	SEWER BDY KIT BOX / SEWER MAINTENANCE SHAFT
	ELECTRICAL STRUCTURE / STREET LIGHT
	NBN CONDUIT
	WATER METER / RECYCLED WATER METER

EASEMENT:

- (A) EASEMENT TO DRAIN WATER 1.5 WIDE
- (B) EASEMENT TO DRAIN WATER VARIABLE WIDTH
- (C) EASEMENT TO DRAIN WATER 2 WIDE
- (D) EASEMENT FOR SUPPORT AND MAINTENANCE 0.5 WIDE
- (E) EASEMENT FOR PADMOUNT SUBSTATION 2.75 WIDE
- (F) RESTRICTION ON THE USE OF LAND
- (G) RESTRICTION ON THE USE OF LAND
- (S) EASEMENT FOR ACCESS MAINTENANCE AND REPAIRS 0.9 WIDE

NOTES:

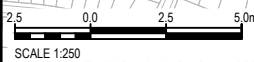
- THE DIMENSIONS, AREAS, EASEMENTS & OTHER DETAILS SHOWN ON THIS PLAN ARE SUBJECT TO FINAL APPROVALS OF COUNCIL & SERVICING AUTHORITIES.
- PURCHASERS SHOULD REFER TO THE REGISTERED PLAN OF SUBDIVISION FOR FINAL DIMENSIONS & OTHER DETAILS.
- PURCHASERS SHOULD EXAMINE THE FULL RANGE OF EASEMENTS & RESTRICTIONS SET OUT IN THE 88B INSTRUMENT ACCOMPANYING THE PLAN OF SUBDIVISION.



LOCALITY PLAN



LOT No.	DATE	SCALE	SIZE	REV
2082	08.04.26	1 : 250	A4	A
TITLE		STATUS		
LOT DISCLOSURE PLAN		ISSUED FOR INFORMATION		



DISCLAIMER

THIS SALES PLAN IS FOR GENERAL INFORMATION PURPOSES ONLY AND IS SUBJECT TO STATUTORY AND LEGAL REQUIREMENTS AND APPROVALS. NO WARRANTY OR REPRESENTATION IS GIVEN AS TO ITS ACCURACY OR COMPLETENESS. TO THE EXTENT PERMITTED BY LAW, LANDCOM (INCLUDING ITS AGENTS AND EMPLOYEES) DISCLAIMS ANY LIABILITY WHATSOEVER IN CONNECTION WITH, RELIANCE UPON OR THE USE OF THIS DOCUMENT.

PANORAMA

LEGEND:

	LOT BOUNDARY
	SURFACE CONTOUR (0.5m INTERVAL)
	KERB
	EASEMENT
	RETAINING WALL
	DRIVEWAY LOCATION
	FOOTPATH
	DENOTES LOT AFFECTED BY FILL
	APZ- ASSET PROTECTION ZONE LINE
	BAL 29
	BAL 19
	BAL 12.5
	APZ AFFECTED LOTS
	BAL 29 CONSTRUCTION
	ACOUSTIC TREATMENT CATEGORY 1
	ACOUSTIC TREATMENT CATEGORY 2
	INFILTRATION SWALE
	STREET TREE

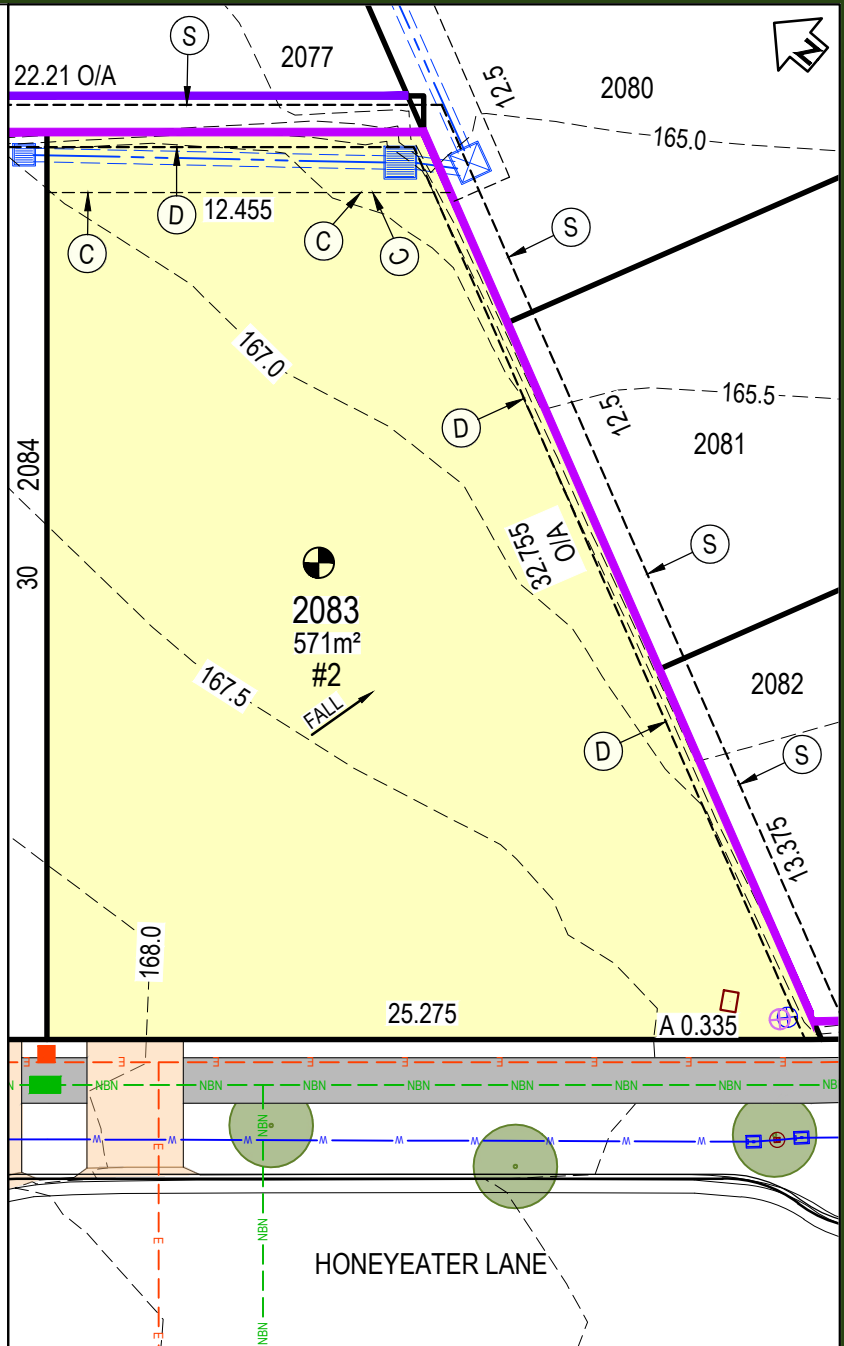
SERVICES:	
	POTABLE WATER MAIN
	RECYCLED WATER
	ELECTRICAL LINE
	SEWER MAIN
	COMMUNICATIONS / NBN
	DRAINAGE PIT AND PIPE
	SEWER BDY KIT BOX / SEWER MAINTENANCE SHAFT
	ELECTRICAL STRUCTURE / STREET LIGHT
	NBN CONDUIT
	WATER METER / RECYCLED WATER METER

EASEMENT:

- (A) EASEMENT TO DRAIN WATER 1.5 WIDE
- (B) EASEMENT TO DRAIN WATER VARIABLE WIDTH
- (C) EASEMENT TO DRAIN WATER 2 WIDE
- (D) EASEMENT FOR SUPPORT AND MAINTENANCE 0.5 WIDE
- (E) EASEMENT FOR PADMOUNT SUBSTATION 2.75 WIDE
- (F) RESTRICTION ON THE USE OF LAND
- (G) RESTRICTION ON THE USE OF LAND
- (S) EASEMENT FOR ACCESS MAINTENANCE AND REPAIRS 0.9 WIDE

NOTES:

- THE DIMENSIONS, AREAS, EASEMENTS & OTHER DETAILS SHOWN ON THIS PLAN ARE SUBJECT TO FINAL APPROVALS OF COUNCIL & SERVICING AUTHORITIES.
- PURCHASERS SHOULD REFER TO THE REGISTERED PLAN OF SUBDIVISION FOR FINAL DIMENSIONS & OTHER DETAILS.
- PURCHASERS SHOULD EXAMINE THE FULL RANGE OF EASEMENTS & RESTRICTIONS SET OUT IN THE 88B INSTRUMENT ACCOMPANYING THE PLAN OF SUBDIVISION.



LOCALITY PLAN



LOT No.	2083	DATE	08.04.26	SCALE	1 : 250	SIZE	A4	REV	A
TITLE		STATUS							
LOT DISCLOSURE PLAN		ISSUED FOR INFORMATION							

DISCLAIMER

THIS SALES PLAN IS FOR GENERAL INFORMATION PURPOSES ONLY AND IS SUBJECT TO STATUTORY AND LEGAL REQUIREMENTS AND APPROVALS. NO WARRANTY OR REPRESENTATION IS GIVEN AS TO ITS ACCURACY OR COMPLETENESS. TO THE EXTENT PERMITTED BY LAW, LANDCOM (INCLUDING ITS AGENTS AND EMPLOYEES) DISCLAIMS ANY LIABILITY WHATSOEVER IN CONNECTION WITH, RELIANCE UPON OR THE USE OF THIS DOCUMENT.

PANORAMA

LEGEND:

	LOT BOUNDARY
	SURFACE CONTOUR (0.5m INTERVAL)
	KERB
	EASEMENT
	RETAINING WALL
	DRIVEWAY LOCATION
	FOOTPATH
	DENOTES LOT AFFECTED BY FILL
	APZ- ASSET PROTECTION ZONE LINE
	BAL 29
	BAL19
	BAL12.5
	APZ AFFECTED LOTS
	BAL 29 CONSTRUCTION
	ACOUSTIC TREATMENT CATEGORY 1
	ACOUSTIC TREATMENT CATEGORY 2
	INFILTRATION SWALE
	STREET TREE

SERVICES:

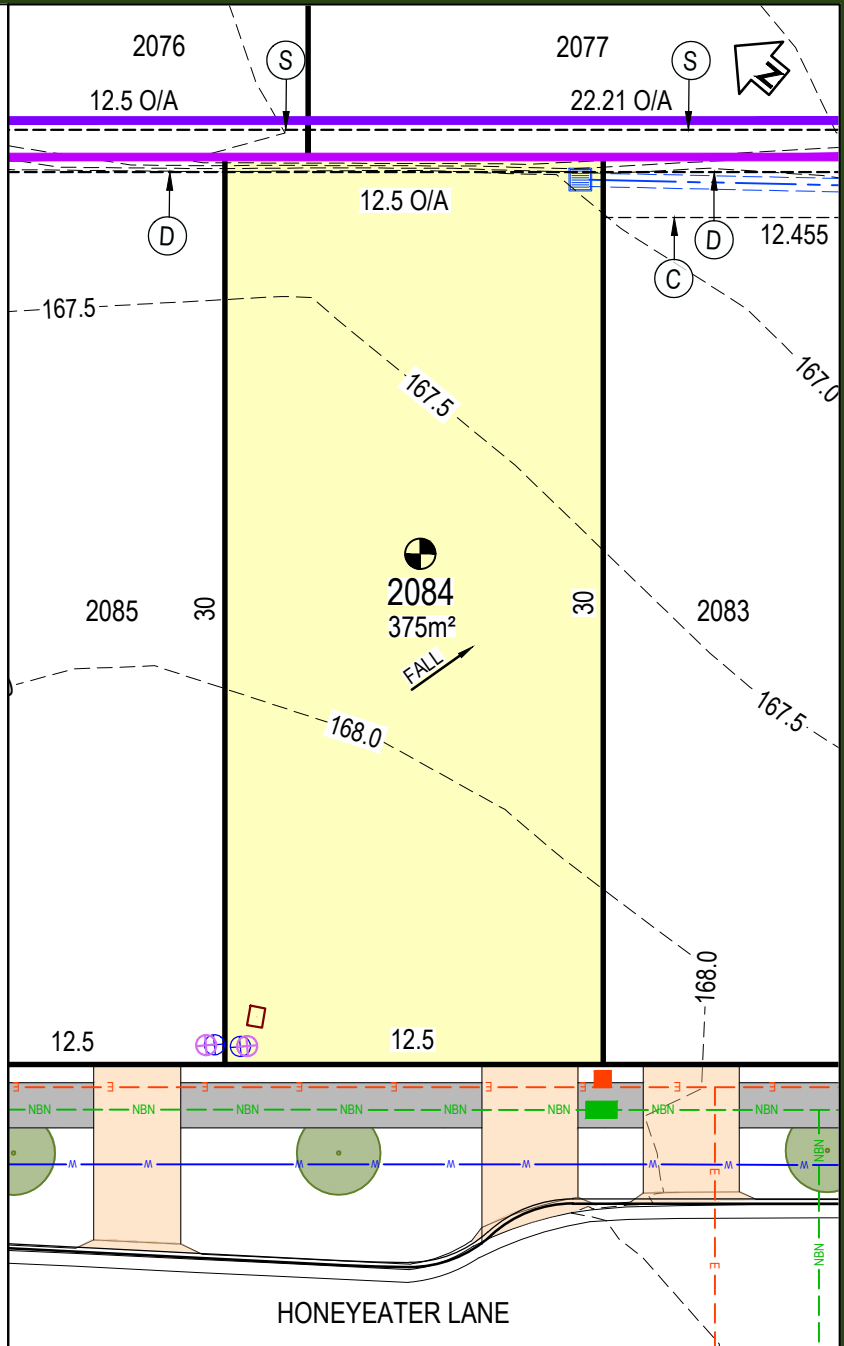
	POTABLE WATER MAIN
	RECYCLED WATER
	ELECTRICAL LINE
	SEWER MAIN
	COMMUNICATIONS / NBN
	DRAINAGE PIT AND PIPE
	SEWER BDY KIT BOX / SEWER MAINTENANCE SHAFT
	ELECTRICAL STRUCTURE / STREET LIGHT
	NBN CONDUIT
	WATER METER / RECYCLED WATER METER

EASEMENT:

- (A) EASEMENT TO DRAIN WATER 1.5 WIDE
- (B) EASEMENT TO DRAIN WATER VARIABLE WIDTH
- (C) EASEMENT TO DRAIN WATER 2 WIDE
- (D) EASEMENT FOR SUPPORT AND MAINTENANCE 0.5 WIDE
- (E) EASEMENT FOR PADMOUNT SUBSTATION 2.75 WIDE
- (F) RESTRICTION ON THE USE OF LAND
- (G) RESTRICTION ON THE USE OF LAND
- (S) EASEMENT FOR ACCESS MAINTENANCE AND REPAIRS 0.9 WIDE

NOTES:

- THE DIMENSIONS, AREAS, EASEMENTS & OTHER DETAILS SHOWN ON THIS PLAN ARE SUBJECT TO FINAL APPROVALS OF COUNCIL & SERVICING AUTHORITIES.
- PURCHASERS SHOULD REFER TO THE REGISTERED PLAN OF SUBDIVISION FOR FINAL DIMENSIONS & OTHER DETAILS.
- PURCHASERS SHOULD EXAMINE THE FULL RANGE OF EASEMENTS & RESTRICTIONS SET OUT IN THE 88B INSTRUMENT ACCOMPANYING THE PLAN OF SUBDIVISION.



LOT No.	2084	DATE	08.04.26	SCALE	1 : 250	SIZE	A4	REV	A
TITLE		STATUS							
LOT DISCLOSURE PLAN		ISSUED FOR INFORMATION							



DISCLAIMER

THIS SALES PLAN IS FOR GENERAL INFORMATION PURPOSES ONLY AND IS SUBJECT TO STATUTORY AND LEGAL REQUIREMENTS AND APPROVALS. NO WARRANTY OR REPRESENTATION IS GIVEN AS TO ITS ACCURACY OR COMPLETENESS. TO THE EXTENT PERMITTED BY LAW, LANDCOM (INCLUDING ITS AGENTS AND EMPLOYEES) DISCLAIMS ANY LIABILITY WHATSOEVER IN CONNECTION WITH, RELIANCE UPON OR THE USE OF THIS DOCUMENT.



PANORAMA

LEGEND:

	LOT BOUNDARY
	SURFACE CONTOUR (0.5m INTERVAL)
	KERB
	EASEMENT
	RETAINING WALL
	DRIVEWAY LOCATION
	FOOTPATH
	DENOTES LOT AFFECTED BY FILL
	APZ- ASSET PROTECTION ZONE LINE
	BAL 29
	BAL 19
	BAL 12.5
	APZ AFFECTED LOTS
	BAL 29 CONSTRUCTION
	ACOUSTIC TREATMENT CATEGORY 1
	ACOUSTIC TREATMENT CATEGORY 2
	INFILTRATION SWALE
	STREET TREE

SERVICES:

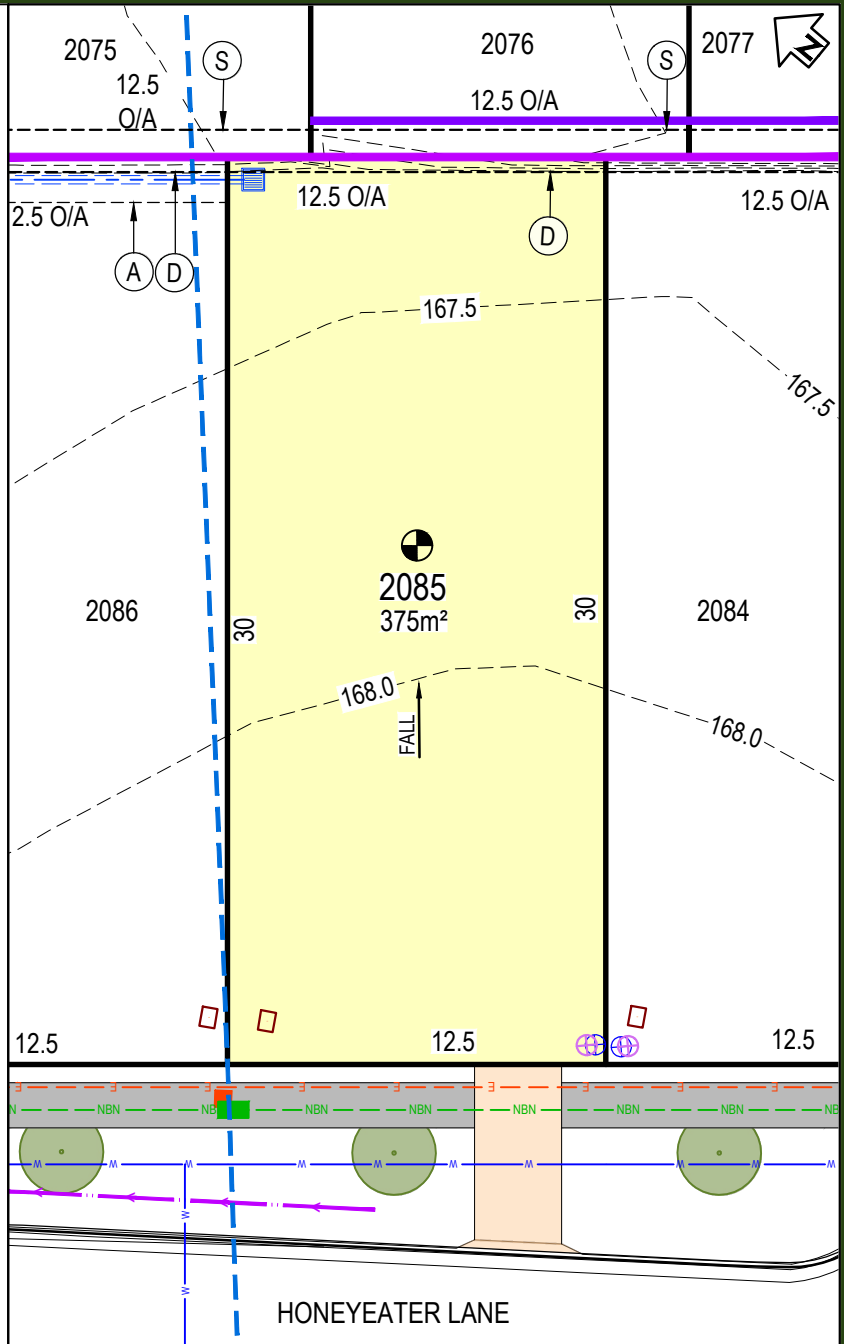
	POTABLE WATER MAIN
	RECYCLED WATER
	ELECTRICAL LINE
	SEWER MAIN
	COMMUNICATIONS / NBN
	DRAINAGE PIT AND PIPE
	SEWER BDY KIT BOX / SEWER MAINTENANCE SHAFT
	ELECTRICAL STRUCTURE / STREET LIGHT
	NBN CONDUIT
	WATER METER / RECYCLED WATER METER

EASEMENT:

- (A) EASEMENT TO DRAIN WATER 1.5 WIDE
- (B) EASEMENT TO DRAIN WATER VARIABLE WIDTH
- (C) EASEMENT TO DRAIN WATER 2 WIDE
- (D) EASEMENT FOR SUPPORT AND MAINTENANCE 0.5 WIDE
- (E) EASEMENT FOR PADMOUNT SUBSTATION 2.75 WIDE
- (F) RESTRICTION ON THE USE OF LAND
- (G) RESTRICTION ON THE USE OF LAND
- (S) EASEMENT FOR ACCESS MAINTENANCE AND REPAIRS 0.9 WIDE

NOTES:

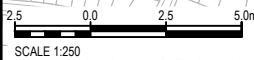
- THE DIMENSIONS, AREAS, EASEMENTS & OTHER DETAILS SHOWN ON THIS PLAN ARE SUBJECT TO FINAL APPROVALS OF COUNCIL & SERVICING AUTHORITIES.
- PURCHASERS SHOULD REFER TO THE REGISTERED PLAN OF SUBDIVISION FOR FINAL DIMENSIONS & OTHER DETAILS.
- PURCHASERS SHOULD EXAMINE THE FULL RANGE OF EASEMENTS & RESTRICTIONS SET OUT IN THE 88B INSTRUMENT ACCOMPANYING THE PLAN OF SUBDIVISION.



LOCALITY PLAN



LOT No.	2085	DATE	08.04.26	SCALE	1 : 250	SIZE	A4	REV	A
TITLE		STATUS							
LOT DISCLOSURE PLAN		ISSUED FOR INFORMATION							



DISCLAIMER

THIS SALES PLAN IS FOR GENERAL INFORMATION PURPOSES ONLY AND IS SUBJECT TO STATUTORY AND LEGAL REQUIREMENTS AND APPROVALS. NO WARRANTY OR REPRESENTATION IS GIVEN AS TO ITS ACCURACY OR COMPLETENESS. TO THE EXTENT PERMITTED BY LAW, LANDCOM (INCLUDING ITS AGENTS AND EMPLOYEES) DISCLAIMS ANY LIABILITY WHATSOEVER IN CONNECTION WITH, RELIANCE UPON OR THE USE OF THIS DOCUMENT.



PANORAMA

LEGEND:

	LOT BOUNDARY
	SURFACE CONTOUR (0.5m INTERVAL)
	KERB
	EASEMENT
	RETAINING WALL
	DRIVEWAY LOCATION
	FOOTPATH
	DENOTES LOT AFFECTED BY FILL
	APZ- ASSET PROTECTION ZONE LINE
	BAL 29
	BAL19
	BAL12.5
	APZ AFFECTED LOTS
	BAL 29 CONSTRUCTION
	ACOUSTIC TREATMENT CATEGORY 1
	ACOUSTIC TREATMENT CATEGORY 2
	INFILTRATION SWALE
	STREET TREE

SERVICES:

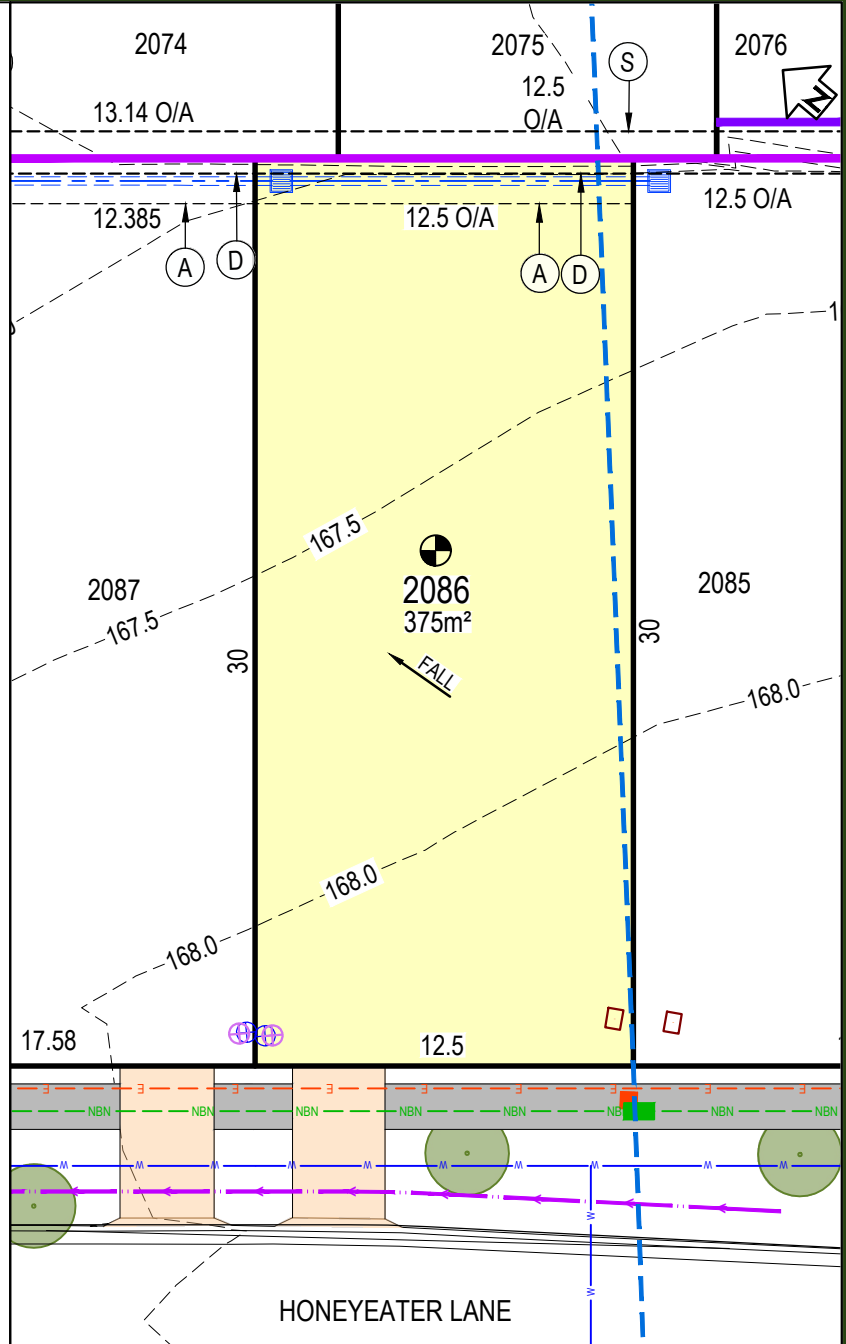
	POTABLE WATER MAIN
	RECYCLED WATER
	ELECTRICAL LINE
	SEWER MAIN
	COMMUNICATIONS / NBN
	DRAINAGE PIT AND PIPE
	SEWER BDY KIT BOX / SEWER MAINTENANCE SHAFT
	ELECTRICAL STRUCTURE / STREET LIGHT
	NBN CONDUIT
	WATER METER / RECYCLED WATER METER

EASEMENT:

- (A) EASEMENT TO DRAIN WATER 1.5 WIDE
- (B) EASEMENT TO DRAIN WATER VARIABLE WIDTH
- (C) EASEMENT TO DRAIN WATER 2 WIDE
- (D) EASEMENT FOR SUPPORT AND MAINTENANCE 0.5 WIDE
- (E) EASEMENT FOR PADMOUNT SUBSTATION 2.75 WIDE
- (F) RESTRICTION ON THE USE OF LAND
- (G) RESTRICTION ON THE USE OF LAND
- (S) EASEMENT FOR ACCESS MAINTENANCE AND REPAIRS 0.9 WIDE

NOTES:

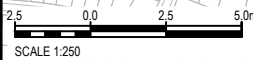
- THE DIMENSIONS, AREAS, EASEMENTS & OTHER DETAILS SHOWN ON THIS PLAN ARE SUBJECT TO FINAL APPROVALS OF COUNCIL & SERVICING AUTHORITIES.
- PURCHASERS SHOULD REFER TO THE REGISTERED PLAN OF SUBDIVISION FOR FINAL DIMENSIONS & OTHER DETAILS.
- PURCHASERS SHOULD EXAMINE THE FULL RANGE OF EASEMENTS & RESTRICTIONS SET OUT IN THE 88B INSTRUMENT ACCOMPANYING THE PLAN OF SUBDIVISION.



LOCALITY PLAN



LOT No.	DATE	SCALE	SIZE	REV
2086	08.04.26	1 : 250	A4	A
TITLE		STATUS		
LOT DISCLOSURE PLAN		ISSUED FOR INFORMATION		



DISCLAIMER

THIS SALES PLAN IS FOR GENERAL INFORMATION PURPOSES ONLY AND IS SUBJECT TO STATUTORY AND LEGAL REQUIREMENTS AND APPROVALS. NO WARRANTY OR REPRESENTATION IS GIVEN AS TO ITS ACCURACY OR COMPLETENESS. TO THE EXTENT PERMITTED BY LAW, LANDCOM (INCLUDING ITS AGENTS AND EMPLOYEES) DISCLAIMS ANY LIABILITY WHATSOEVER IN CONNECTION WITH, RELIANCE UPON OR THE USE OF THIS DOCUMENT.

PANORAMA

LEGEND:

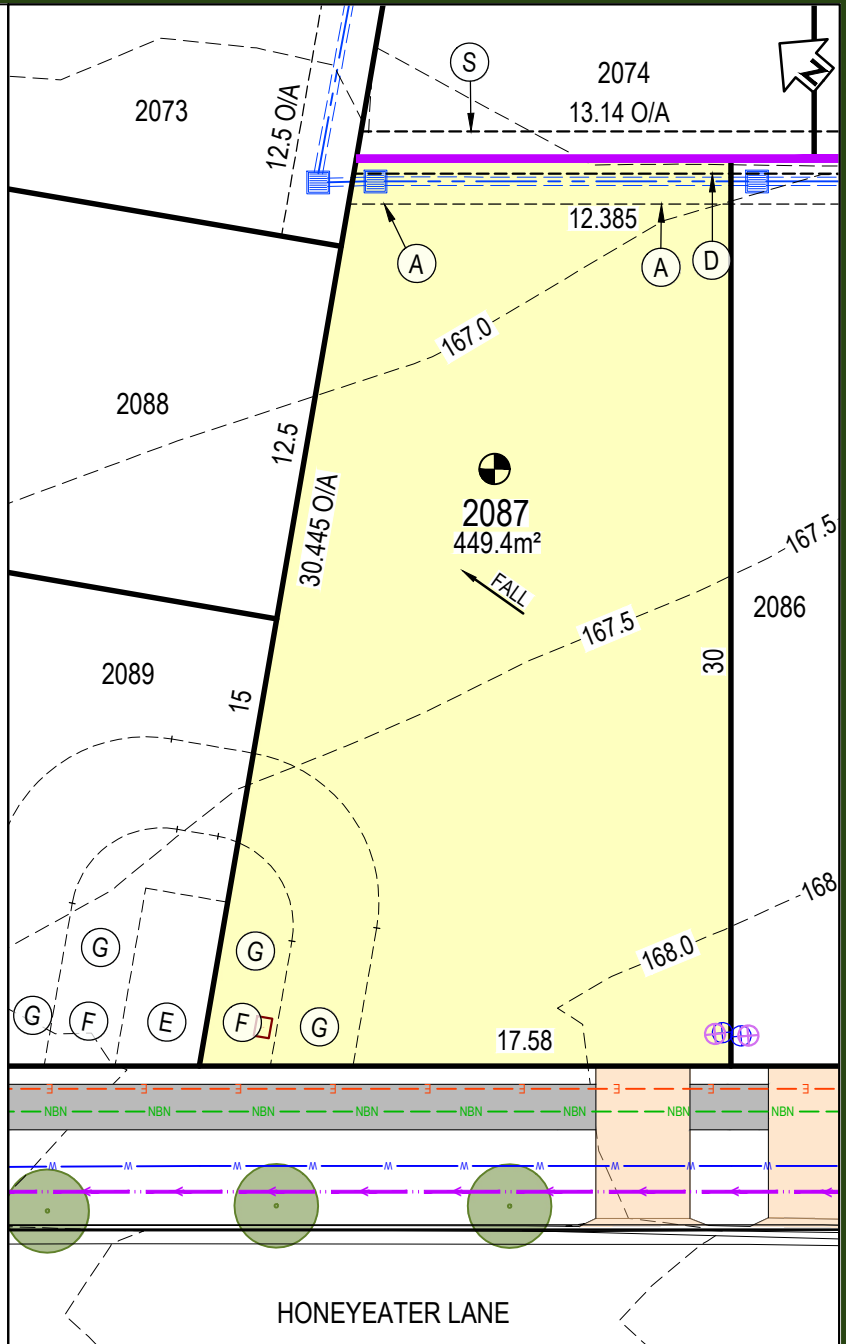
	LOT BOUNDARY
	SURFACE CONTOUR (0.5m INTERVAL)
	KERB
	EASEMENT
	RETAINING WALL
	DRIVEWAY LOCATION
	FOOTPATH
	DENOTES LOT AFFECTED BY FILL
	APZ- ASSET PROTECTION ZONE LINE
	BAL 29
	BAL 19
	BAL 12.5
	APZ AFFECTED LOTS
	BAL 29 CONSTRUCTION
	ACOUSTIC TREATMENT CATEGORY 1
	ACOUSTIC TREATMENT CATEGORY 2
	INFILTRATION SWALE
	STREET TREE
SERVICES:	
	POTABLE WATER MAIN
	RECYCLED WATER
	ELECTRICAL LINE
	SEWER MAIN
	COMMUNICATIONS / NBN
	DRAINAGE PIT AND PIPE
	SEWER BDY KIT BOX / SEWER MAINTENANCE SHAFT
	ELECTRICAL STRUCTURE / STREET LIGHT
	NBN CONDUIT
	WATER METER / RECYCLED WATER METER

EASEMENT:

- (A) EASEMENT TO DRAIN WATER 1.5 WIDE
- (B) EASEMENT TO DRAIN WATER VARIABLE WIDTH
- (C) EASEMENT TO DRAIN WATER 2 WIDE
- (D) EASEMENT FOR SUPPORT AND MAINTENANCE 0.5 WIDE
- (E) EASEMENT FOR PADMOUNT SUBSTATION 2.75 WIDE
- (F) RESTRICTION ON THE USE OF LAND
- (G) RESTRICTION ON THE USE OF LAND
- (S) EASEMENT FOR ACCESS MAINTENANCE AND REPAIRS 0.9 WIDE

NOTES:

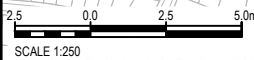
- THE DIMENSIONS, AREAS, EASEMENTS & OTHER DETAILS SHOWN ON THIS PLAN ARE SUBJECT TO FINAL APPROVALS OF COUNCIL & SERVICING AUTHORITIES.
- PURCHASERS SHOULD REFER TO THE REGISTERED PLAN OF SUBDIVISION FOR FINAL DIMENSIONS & OTHER DETAILS.
- PURCHASERS SHOULD EXAMINE THE FULL RANGE OF EASEMENTS & RESTRICTIONS SET OUT IN THE 88B INSTRUMENT ACCOMPANYING THE PLAN OF SUBDIVISION.



LOCALITY PLAN



LOT No.	DATE	SCALE	SIZE	REV
2087	08.04.26	1 : 250	A4	A
TITLE		STATUS		
LOT DISCLOSURE PLAN		ISSUED FOR INFORMATION		



DISCLAIMER

THIS SALES PLAN IS FOR GENERAL INFORMATION PURPOSES ONLY AND IS SUBJECT TO STATUTORY AND LEGAL REQUIREMENTS AND APPROVALS. NO WARRANTY OR REPRESENTATION IS GIVEN AS TO ITS ACCURACY OR COMPLETENESS. TO THE EXTENT PERMITTED BY LAW, LANDCOM (INCLUDING ITS AGENTS AND EMPLOYEES) DISCLAIMS ANY LIABILITY WHATSOEVER IN CONNECTION WITH, RELIANCE UPON OR THE USE OF THIS DOCUMENT.