

## Sales Plan Notes – Release 3

### 1. Fill

Lots 1142-1150 and 1158-1160 have been filled, in whole or in part. Intending purchasers should satisfy themselves of any requirements that Council may have in relation to building on these lots.

### 2. Driveways

All driveways locations are set by Landcom as shown in the Sales Plans in order to maximise opportunities for street tree canopy. The driveways crossings will be constructed by Landcom.

### 3. Lot dimensions

The dimensions shown on the Sales Plan are indicative only. Detailed lot dimensions are shown on the draft plan of subdivision which is attached to the Contract for Sale of Land.

### 4. Streetscape

In order to promote a quality streetscape, all lots are guided by simple and practical guidelines through Council's Development Control Plan which controls aspects of the streetscape including landscaping and fencing.

The Panorama Design Guidelines form part of the conditions of sale in your property purchase which will ensure the best possible outcome for you and your neighbours. Completion of your house and landscaping must be in accordance with the with the terms and conditions of your contract. Copies of the Panorama Design Guidelines are available from Landcom's Panorama Sales Centre and online.

### 5. Restrictions on use

To ascertain the uses permitted on the lots and controls on development of the lots, intending purchasers should make enquiries at Council.

In addition, Council will be able to advise as to whether any development applications have been lodged in respect of nearby lands. Any person is able to inspect Council's register of development applications. Details of Major Project Assessments may be found on the website of the NSW Department of Planning.

Certain restrictions on the use of the land can be found in the instrument created at the time of registration of the plan of subdivision under Section 88B of the Conveyancing Act 1919 (NSW). A copy of the draft Section 88B instrument is attached to the Contract for Sale of Land.

### 6. Fencing costs

Landcom will not contribute to the cost of any boundary fencing.

### 7. Utility services

Landcom has met the requirements of Council and the utilities providers in carrying out the subdivision works. The location of utility services, including sewer lines, shown on the Sales Plan is based on design information only.

The final position of utility services 'as constructed' may vary from these locations. Purchasers should make their own enquiries of utilities providers in relation to:

- connection and service provision to the lot;
- the location of utility services; and
- building over, or near, utility services.

### 8. Landscaping and embellishment

The depiction of landscaping, cycleways and pathways, street tree planting and the like on the Sales Plan is indicative only and does not necessarily reflect final designs which require the input and approval of various authorities.

### 9. Sales process

Landcom reserves the right to withdraw any lot from sale at any time.

### 10. Disclaimer

This Sales Plan is for general information purposes only and is subject to statutory and legal requirements and approvals. No warranty or representation is given as to its accuracy or completeness. To the extent permitted by law, Landcom (including its agents and employees) disclaims any liability whatsoever in connection with, reliance upon or the use of this document.



# PANORAMA

NORTH WILTON

Sales Office: 195 Fairway Drive, Wilton NSW 2571

Phone: (02) 9391 2983 | [www.landcom.com.au/panorama](http://www.landcom.com.au/panorama)

Landcom proudly prints all brochures on recycled paper using vegetable-based inks. © LCM0042

Scan for  
directions to  
Sales Centre



## Sales Plan Release 3

# PANORAMA

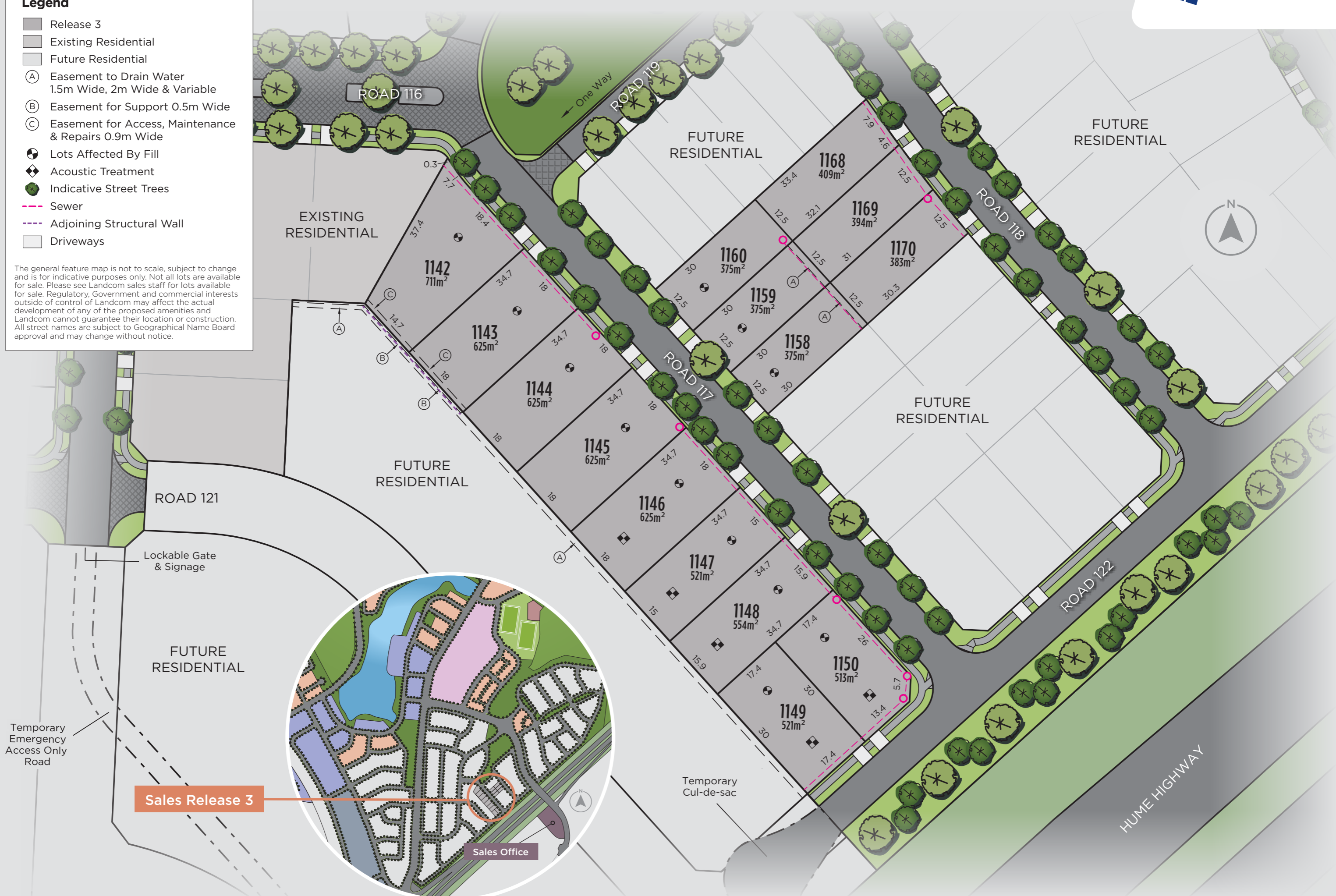
## NORTH WILTON



**Legend**

- Release 3
- Existing Residential
- Future Residential
- A Easement to Drain Water  
1.5m Wide, 2m Wide & Variable
- B Easement for Support 0.5m Wide
- C Easement for Access, Maintenance  
& Repairs 0.9m Wide
- Lots Affected By Fill
- Acoustic Treatment
- Indicative Street Trees
- Sewer
- Adjoining Structural Wall
- Driveways

The general feature map is not to scale, subject to change and is for indicative purposes only. Not all lots are available for sale. Please see Landcom sales staff for lots available for sale. Regulatory, Government and commercial interests outside of control of Landcom may affect the actual development of any of the proposed amenities and Landcom cannot guarantee their location or construction. All street names are subject to Geographical Name Board approval and may change without notice.



**Sales Release 3**

Sales Office